

# Market Report for the Week of January 29, 2018

## Daily Averages

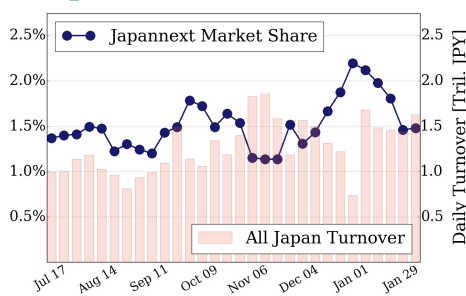
Universe	Value (JPY)	Volume	Share	PI (bps)	Symbols
All Market	114,611,096,721	82,629,588	2.88 %	3.88	2486
Large Cap	24,022,196,812	9,811,640	1.48 %	1.31	100
Mid Cap	58,786,752,316	29,802,180	4.96 %	3.77	400
Small Cap	18,900,842,774	31,091,240	2.89 %	6.62	1398
Mothers & Jasdaq	6,501,915,660	10,505,000	2.94 %	7.60	489
ETFs & REITs	6,399,389,159	1,419,528	2.19 %	1.71	100

All Market  
**2.9 %**

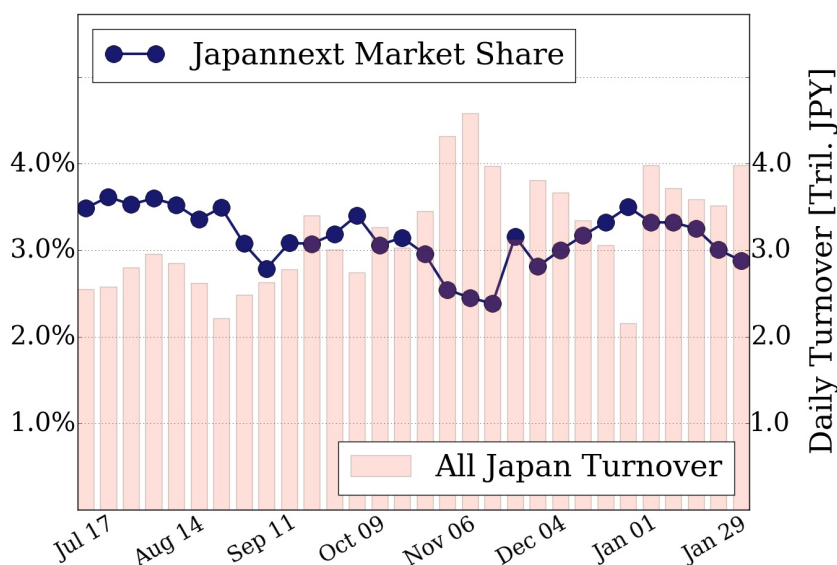
Topix 100  
**1.5 %**

Nikkei 225  
**2.6 %**

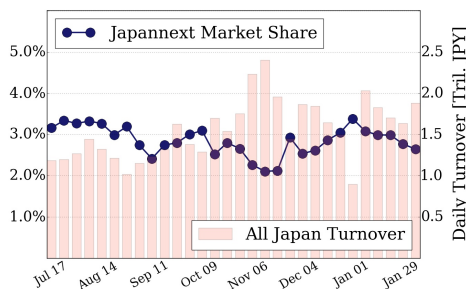
### Topix 100



### All Market



### Nikkei 225



### Top Stocks by Turnover

Stock	Value (JPY)	Share	PI (bps)
1570 NIKKEILV	11,722,189,618	1.51%	1.05
6506 YASKAWA	8,591,138,800	8.17%	5.30
7974 NINTEND	7,898,302,500	0.98%	1.40
6502 TOSHIBA	6,781,656,600	11.43%	8.13
6770 ALPS EL	6,379,677,650	7.78%	4.18

### Top Stocks by Market Share

Stock	Value (JPY)	Share	PI (bps)
8922 JAM	176,524,040	16.07%	14.38
3647 GTHREEHD	184,747,430	15.46%	16.30
3528 PROSPECT	605,048,000	14.72%	46.70
3765 GUNGHO	1,085,677,160	14.36%	10.22
8524 NORTHPBK	523,187,450	13.62%	6.26

### Top Stocks by Price Improvement

Stock	Value (JPY)	Share	PI (bps)
8918 LAND	245,944,730	10.08%	230.64
3250 ADWORKS	145,768,650	2.11%	82.90
3528 PROSPECT	605,048,000	14.72%	46.70
2315 CAICA	416,470,090	12.54%	44.11
7826 FURUYAMT	100,383,600	2.61%	38.74

### Top Stocks by Savings

Stock	Value (JPY)	Share	Savings
6502 TOSHIBA	6,781,656,600	11.43%	4,338,600
8918 LAND	245,944,730	10.08%	3,930,790
6506 YASKAWA	8,591,138,800	8.17%	3,530,100
6770 ALPS EL	6,379,677,650	7.78%	2,161,700
4689 YAHOO J	4,679,052,580	12.65%	2,150,380

- ▶ Analysis is based on SBI Japannext and Thomson Reuters data. Large Cap = TPX100, Mid Cap = TPX500 excl. TPX100, Small Cap = Section1 + Section2 excl. TPX500.
- ▶ All Japan Turnover = Japannext (J+X+U+N) + TSE (excl. Tostnet) + Chi-X (excl. Chi-Match, Chi-Select). Market Share = Japannext turnover / All Japan Turnover.
- ▶ Price Improvement (PI) and Savings (PI\*volume) are calculated by comparing the execution price against the primary market's best bid for each sell or best offer for each buy at the point of execution from the taker's perspective. Reported PI is a value-weighted average. Names with weekly traded value less than 100,000,000 JPY are excluded from the rankings tables.