

# Market Report for the Week of February 19, 2018

## Daily Averages

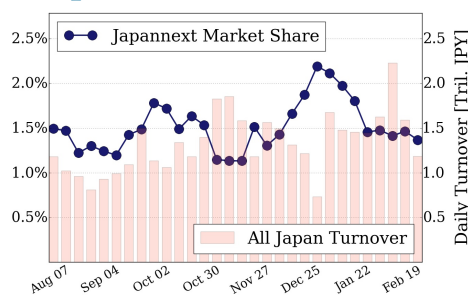
Universe	Value (JPY)	Volume	Share	PI (bps)	Symbols
All Market	82,465,240,741	64,240,785	2.69 %	4.09	2748
Large Cap	16,210,434,176	7,085,540	1.37 %	1.37	100
Mid Cap	40,983,264,350	25,380,900	4.66 %	3.91	402
Small Cap	14,009,607,386	23,893,040	2.76 %	7.16	1543
Mothers & Jasdaq	4,945,424,318	6,713,580	2.43 %	7.52	608
ETFs & REITs	6,316,510,511	1,167,725	2.16 %	1.97	95

All Market  
**2.7 %**

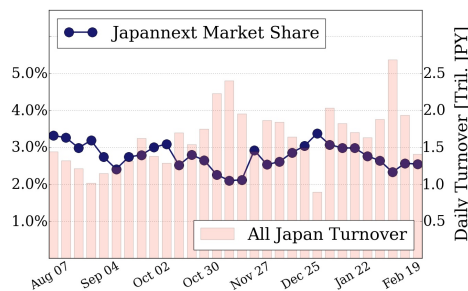
Topix 100  
**1.4 %**

Nikkei 225  
**2.6 %**

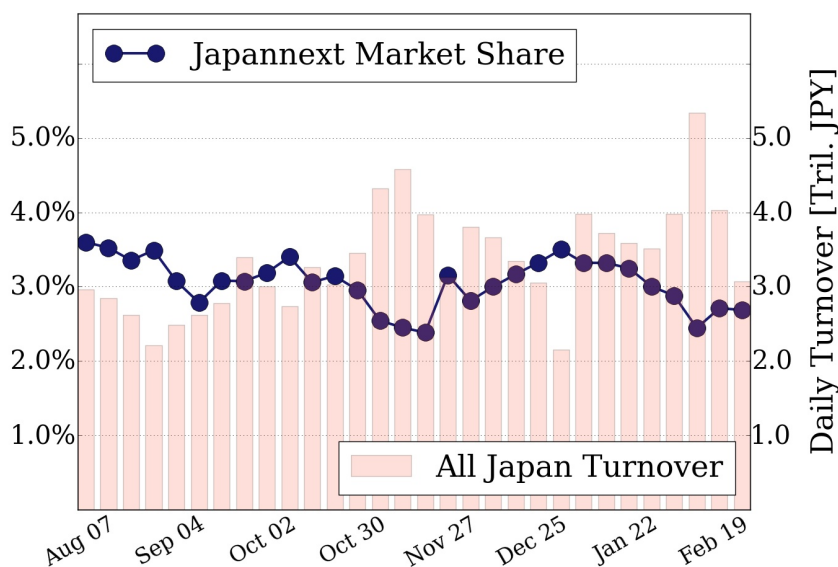
### Topix 100



### Nikkei 225



### All Market



### Top Stocks by Turnover

Stock	Value (JPY)	Share	PI (bps)
1570 NIKKEILV	15,306,307,814	1.76%	1.28
1357 NKDOUBLE	5,571,614,256	2.78%	1.99
7974 NINTEND	4,121,111,000	0.67%	1.39
3765 GUNGHO	3,748,815,980	9.80%	7.65
6502 TOSHIBA	3,468,473,600	15.49%	9.30

### Top Stocks by Market Share

Stock	Value (JPY)	Share	PI (bps)
6502 TOSHIBA	3,468,473,600	15.49%	9.30
3315 NIP-COKE	109,496,520	14.54%	25.39
9412 SKYPER J	280,207,930	13.53%	5.82
3528 PROSPECT	409,372,200	13.06%	48.83
6796 CLARION	451,543,700	13.03%	10.38

### Top Stocks by Price Improvement

Stock	Value (JPY)	Share	PI (bps)
3528 PROSPECT	409,372,200	13.06%	48.83
2315 CAICA	178,353,720	12.97%	46.09
3315 NIP-COKE	109,496,520	14.54%	25.39
6698 VISCOTEC	126,871,500	0.68%	24.02
9424 JPN-COMM	146,370,130	8.93%	21.50

### Top Stocks by Savings

Stock	Value (JPY)	Share	Savings
6502 TOSHIBA	3,468,473,600	15.49%	2,770,300
3765 GUNGHO	3,748,815,980	9.80%	1,721,030
4689 YAHOO J	3,194,967,820	8.26%	1,497,450
9501 TEPCOHD	2,308,370,380	11.05%	1,297,750
3528 PROSPECT	409,372,200	13.06%	1,228,700

- ▶ Analysis is based on SBI Japannext and Thomson Reuters data. Large Cap = TPX100, Mid Cap = TPX500 excl. TPX100, Small Cap = Section1 + Section2 excl. TPX500.
- ▶ All Japan Turnover = Japannext (J+X+U+N) + TSE (excl. Tostnet) + Chi-X (excl. Chi-Match, Chi-Select). Market Share = Japannext turnover / All Japan Turnover.
- ▶ Price Improvement (PI) and Savings (PI\*volume) are calculated by comparing the execution price against the primary market's best bid for each sell or best offer for each buy at the point of execution from the taker's perspective. Reported PI is a value-weighted average. Names with weekly traded value less than 100,000,000 JPY are excluded from the rankings tables.