

Market Report for the Week of February 26, 2018

Daily Averages

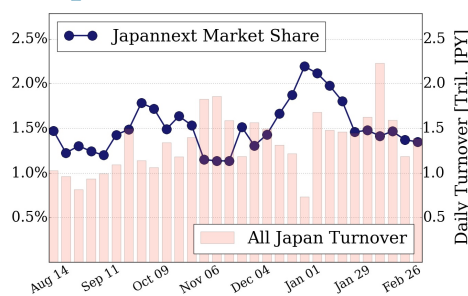
Universe	Value (JPY)	Volume	Share	PI (bps)	Symbols
All Market	89,612,464,319	69,542,861	2.61 %	4.00	2761
Large Cap	18,661,863,104	8,794,520	1.35 %	1.34	100
Mid Cap	43,959,501,174	27,317,440	4.47 %	3.82	400
Small Cap	14,517,075,830	24,476,320	2.81 %	7.17	1577
Mothers & Jasdq	4,744,427,792	7,593,760	2.31 %	8.55	589
ETFs & REITs	7,729,596,419	1,360,821	2.22 %	2.05	96

All Market
2.6 %

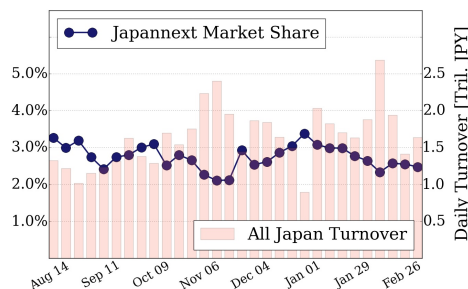
Topix 100
1.3 %

Nikkei 225
2.5 %

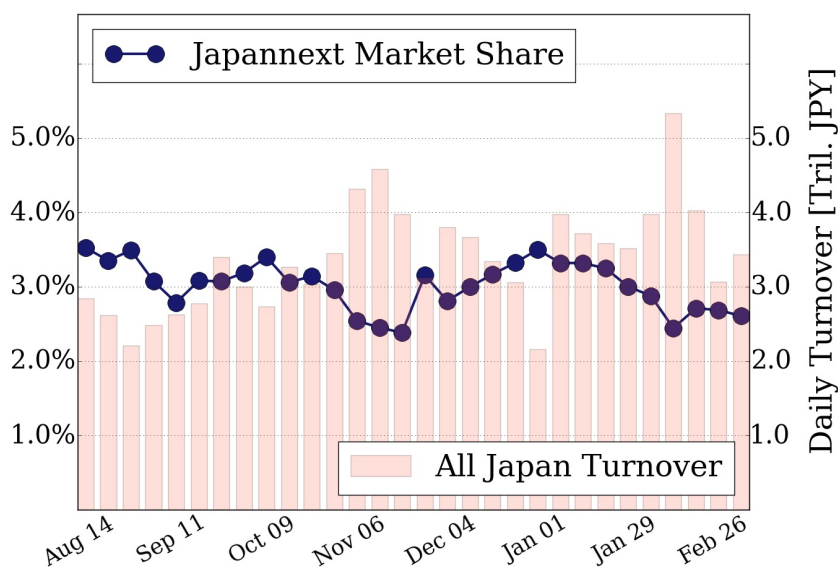
Topix 100



Nikkei 225



All Market



Top Stocks by Turnover

Stock	Value (JPY)	Share	PI (bps)
1570 NIKKEILV	16,542,517,007	1.68%	1.28
4689 YAHOO J	6,143,913,820	7.90%	6.47
1357 NKDOUBLE	6,090,476,704	3.00%	1.92
7974 NINTEND	4,925,897,500	0.71%	1.36
4005 SMICHEM	4,363,753,000	9.61%	4.66

Top Stocks by Market Share

Stock	Value (JPY)	Share	PI (bps)
2315 CAICA	236,654,450	16.44%	51.23
4564 OTS	116,128,870	15.57%	11.52
6773 PIONEER	996,545,130	15.15%	15.08
3647 GTHREEHD	114,003,970	14.77%	15.34
3323 RECOMM	892,117,220	14.37%	9.89

Top Stocks by Price Improvement

Stock	Value (JPY)	Share	PI (bps)
8918 LAND	133,881,930	8.84%	264.51
3250 ADWORKS	137,805,140	4.34%	90.94
3528 PROSPECT	332,225,800	11.94%	60.19
2315 CAICA	236,654,450	16.44%	51.23
3446 JTECCORP	431,198,500	0.96%	23.87

Top Stocks by Savings

Stock	Value (JPY)	Share	Savings
4689 YAHOO J	6,143,913,820	7.90%	2,936,940
8918 LAND	133,881,930	8.84%	2,340,680
6502 TOSHIBA	3,173,375,800	11.12%	2,230,500
3765 GUNGHO	3,532,127,640	7.97%	1,476,540
5706 MTI-M&S	3,458,854,400	9.87%	1,275,300

- ▶ Analysis is based on SBI Japannext and Thomson Reuters data. Large Cap = TPX100, Mid Cap = TPX500 excl. TPX100, Small Cap = Section1 + Section2 excl. TPX500.
- ▶ All Japan Turnover = Japannext (J+X+U+N) + TSE (excl. Tostnet) + Chi-X (excl. Chi-Match, Chi-Select). Market Share = Japannext turnover / All Japan Turnover.
- ▶ Price Improvement (PI) and Savings (PI*volume) are calculated by comparing the execution price against the primary market's best bid for each sell or best offer for each buy at the point of execution from the taker's perspective. Reported PI is a value-weighted average. Names with weekly traded value less than 100,000,000 JPY are excluded from the rankings tables.