

Market Report for the Week of March 05, 2018

Daily Averages

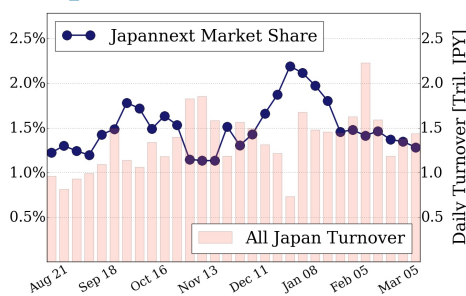
| Universe | Value (JPY) | Volume | Share | PI (bps) | Symbols |
|-----------------|----------------|------------|--------|----------|---------|
| All Market | 88,132,109,973 | 70,095,104 | 2.51 % | 4.03 | 2624 |
| Large Cap | 18,419,301,076 | 8,259,460 | 1.28 % | 1.40 | 100 |
| Mid Cap | 42,854,347,914 | 25,728,000 | 4.13 % | 3.71 | 400 |
| Small Cap | 14,340,513,058 | 25,095,060 | 2.83 % | 7.18 | 1491 |
| Mothers & Jasdq | 4,559,495,994 | 9,354,280 | 2.25 % | 9.94 | 540 |
| ETFs & REITs | 7,958,451,931 | 1,658,304 | 2.42 % | 2.17 | 93 |

All Market
2.5 %

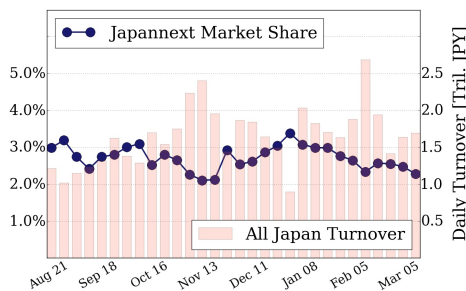
Topix 100
1.3 %

Nikkei 225
2.3 %

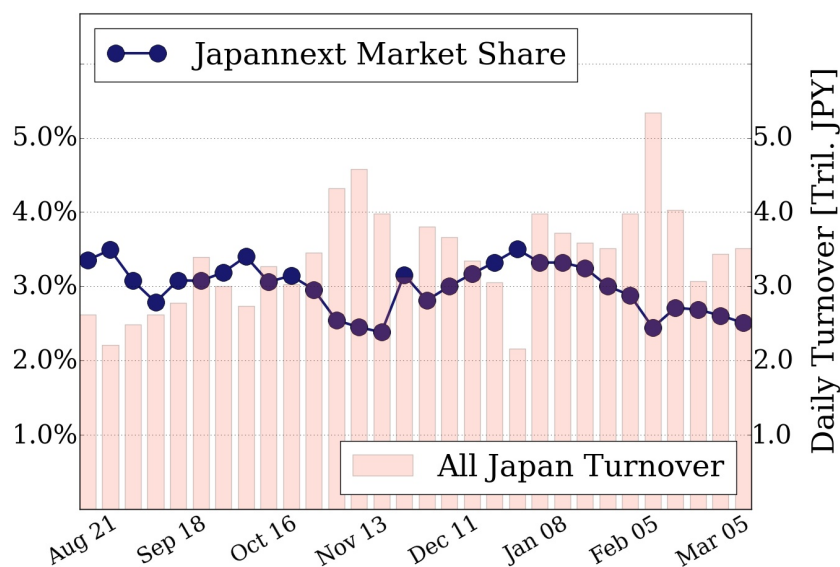
Topix 100



Nikkei 225



All Market



Top Stocks by Turnover

| Stock | Value (JPY) | Share | PI (bps) |
|---------------|----------------|--------|----------|
| 1570 NIKKEILV | 16,584,997,870 | 1.75% | 1.44 |
| 1357 NKDOUBLE | 8,248,059,424 | 3.50% | 1.89 |
| 7974 NINTEND | 6,087,482,000 | 0.78% | 1.35 |
| 6502 TOSHIBA | 5,471,834,100 | 11.20% | 9.77 |
| 6506 YASKAWA | 4,011,202,200 | 5.12% | 2.58 |

Top Stocks by Market Share

| Stock | Value (JPY) | Share | PI (bps) |
|---------------|---------------|--------|----------|
| 3647 GTHREEHD | 162,216,760 | 19.17% | 16.74 |
| 2315 CAICA | 195,179,740 | 16.80% | 53.05 |
| 3323 RECOMM | 1,077,938,410 | 14.25% | 9.91 |
| 9501 TEPCOHD | 2,483,324,260 | 11.58% | 6.72 |
| 8918 LAND | 265,233,440 | 11.31% | 283.13 |

Top Stocks by Price Improvement

| Stock | Value (JPY) | Share | PI (bps) |
|---------------|-------------|--------|----------|
| 8918 LAND | 265,233,440 | 11.31% | 283.13 |
| 7638 NEW ART | 413,500,980 | 8.15% | 86.60 |
| 2315 CAICA | 195,179,740 | 16.80% | 53.05 |
| 3528 PROSPECT | 168,107,900 | 9.63% | 48.14 |
| 8585 OR.CORP | 266,275,400 | 8.45% | 18.66 |

Top Stocks by Savings

| Stock | Value (JPY) | Share | Savings |
|--------------|---------------|--------|-----------|
| 6502 TOSHIBA | 5,471,834,100 | 11.20% | 4,274,100 |
| 8918 LAND | 265,233,440 | 11.31% | 4,059,980 |
| 4689 YAHOO J | 3,759,266,310 | 8.72% | 1,995,570 |
| 7638 NEW ART | 413,500,980 | 8.15% | 1,909,660 |
| 2768 SOJITZ | 2,147,904,560 | 9.08% | 1,404,510 |

- ▶ Analysis is based on SBI Japannext and Thomson Reuters data. Large Cap = TPX100, Mid Cap = TPX500 excl. TPX100, Small Cap = Section1 + Section2 excl. TPX500.
- ▶ All Japan Turnover = Japannext (J+X+U+N) + TSE (excl. Tostnet) + Chi-X (excl. Chi-Match, Chi-Select). Market Share = Japannext turnover / All Japan Turnover.
- ▶ Price Improvement (PI) and Savings (PI*volume) are calculated by comparing the execution price against the primary market's best bid for each sell or best offer for each buy at the point of execution from the taker's perspective. Reported PI is a value-weighted average. Names with weekly traded value less than 100,000,000 JPY are excluded from the rankings tables.