

Market Report for the Week of March 19, 2018

Daily Averages

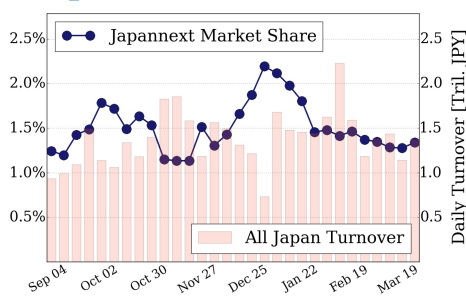
Universe	Value (JPY)	Volume	Share	PI (bps)	Symbols
All Market	85,208,623,264	66,201,605	2.55 %	3.97	2677
Large Cap	18,464,448,880	9,056,850	1.34 %	1.36	100
Mid Cap	40,716,614,467	24,991,950	4.19 %	3.73	401
Small Cap	12,791,942,845	20,594,425	2.71 %	7.01	1526
Mothers & Jasdaq	4,336,012,180	9,613,925	2.31 %	11.30	559
ETFs & REITs	8,899,604,892	1,944,455	2.74 %	2.05	92

All Market
2.6 %

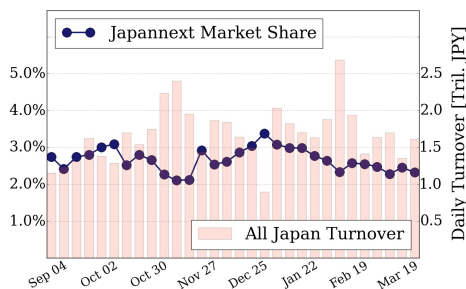
Topix 100
1.3 %

Nikkei 225
2.3 %

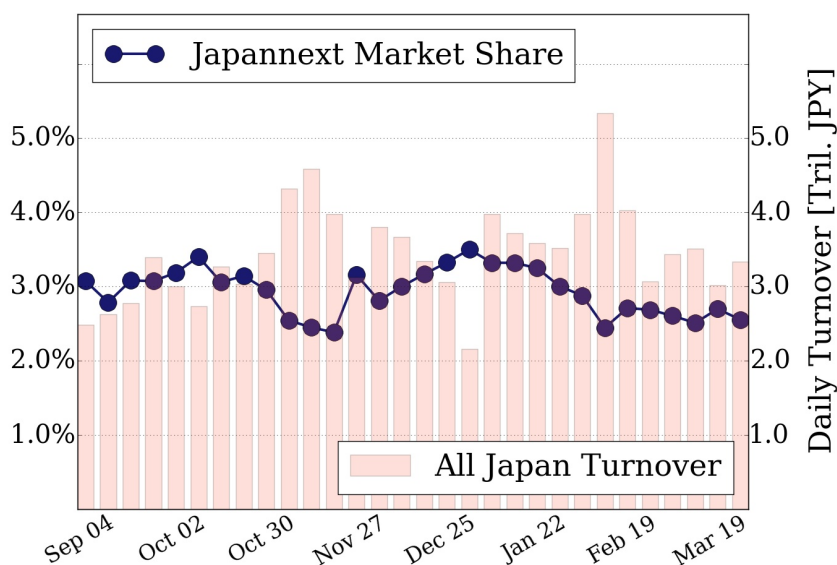
Topix 100



Nikkei 225



All Market



Top Stocks by Turnover

Stock	Value (JPY)	Share	PI (bps)
1570 NIKKEILV	14,727,272,173	2.11%	1.43
1357 NKDOUBLE	7,900,197,509	4.08%	1.70
7201 NISSAN	3,566,637,190	3.88%	1.18
6502 TOSHIBA	3,511,289,300	10.13%	9.35
7974 NINTEND	3,297,912,000	0.65%	1.35

Top Stocks by Market Share

Stock	Value (JPY)	Share	PI (bps)
2315 CAICA	306,850,810	21.52%	51.70
3647 GTHREEHD	128,404,880	16.09%	16.99
3323 RECOMM	869,388,340	14.74%	13.80
7638 NEW ART	109,124,180	14.64%	159.27
8410 SEVEN BK	1,019,766,930	12.47%	9.04

Top Stocks by Price Improvement

Stock	Value (JPY)	Share	PI (bps)
7638 NEW ART	109,124,180	14.64%	159.27
3350 RED	111,522,110	8.92%	88.06
3528 PROSPECT	263,862,000	10.55%	59.06
2315 CAICA	306,850,810	21.52%	51.70
2538 JFLA	107,745,300	5.85%	45.91

Top Stocks by Savings

Stock	Value (JPY)	Share	Savings
6502 TOSHIBA	3,511,289,300	10.13%	2,615,600
2768 SOJITZ	1,838,863,100	11.13%	1,141,540
2315 CAICA	306,850,810	21.52%	1,061,890
7638 NEW ART	109,124,180	14.64%	1,046,560
9501 TEPCOHD	1,838,464,160	9.78%	962,880

- ▶ Analysis is based on SBI Japannext and Thomson Reuters data. Large Cap = TPX100, Mid Cap = TPX500 excl. TPX100, Small Cap = Section1 + Section2 excl. TPX500.
- ▶ All Japan Turnover = Japannext (J+X+U+N) + TSE (excl. Tostnet) + Chi-X (excl. Chi-Match, Chi-Select). Market Share = Japannext turnover / All Japan Turnover.
- ▶ Price Improvement (PI) and Savings (PI*volume) are calculated by comparing the execution price against the primary market's best bid for each sell or best offer for each buy at the point of execution from the taker's perspective. Reported PI is a value-weighted average. Names with weekly traded value less than 100,000,000 JPY are excluded from the rankings tables.