

Market Report for the Week of March 26, 2018

Daily Averages

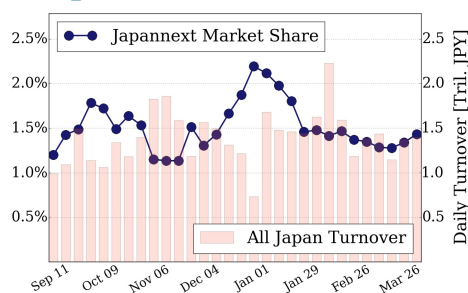
Universe	Value (JPY)	Volume	Share	PI (bps)	Symbols
All Market	89,489,420,913	67,747,356	2.65 %	4.02	2708
Large Cap	20,052,460,634	9,147,720	1.43 %	1.41	100
Mid Cap	42,821,732,746	26,450,840	4.30 %	3.93	400
Small Cap	12,941,001,294	21,737,520	2.86 %	7.26	1553
Mothers & Jasdaq	4,637,840,364	8,393,340	2.52 %	9.24	559
ETFs & REITs	9,036,385,875	2,017,936	2.68 %	2.02	96

All Market
2.7 %

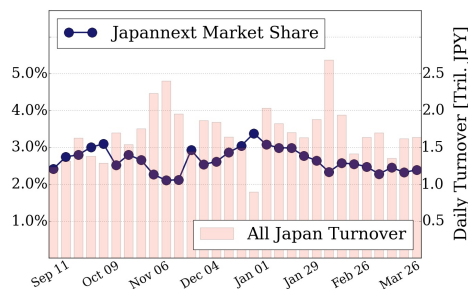
Topix 100
1.4 %

Nikkei 225
2.4 %

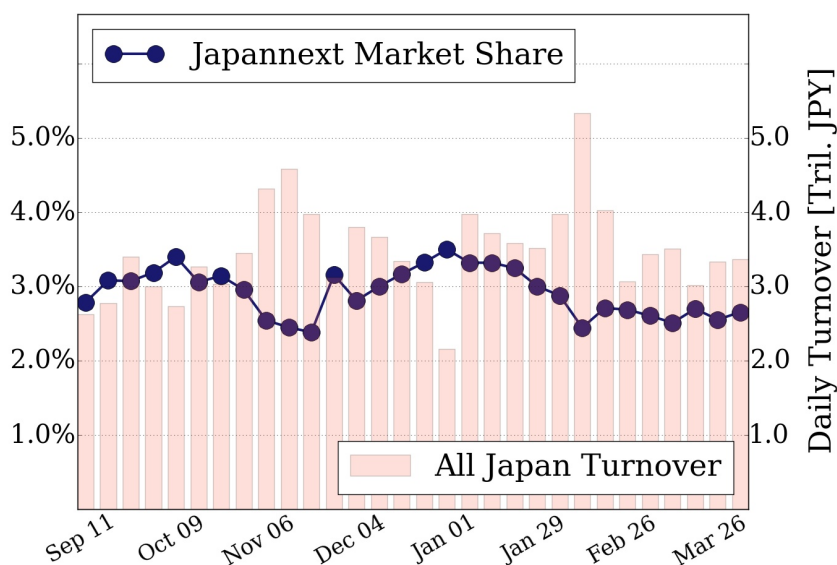
Topix 100



Nikkei 225



All Market



Top Stocks by Turnover

Stock	Value (JPY)	Share	PI (bps)
1570 NIKKEILV	18,720,509,378	1.89%	1.44
1357 NKDOUBLE	10,299,643,637	4.34%	1.88
6502 TOSHIBA	5,481,879,700	11.12%	9.61
7974 NINTEND	5,061,447,000	0.81%	1.47
7201 NISSAN	4,380,058,950	3.47%	1.19

Top Stocks by Market Share

Stock	Value (JPY)	Share	PI (bps)
3528 PROSPECT	549,272,300	17.01%	58.67
2315 CAICA	150,506,760	15.57%	50.21
8925 ARDEPRO	144,837,970	15.36%	20.97
8515 AIFUL	1,061,622,170	13.76%	8.04
3323 RECOMM	724,740,160	13.41%	12.67

Top Stocks by Price Improvement

Stock	Value (JPY)	Share	PI (bps)
3350 RED	118,500,410	13.23%	107.07
3528 PROSPECT	549,272,300	17.01%	58.67
2315 CAICA	150,506,760	15.57%	50.21
3540 CIMEDICL	105,906,100	3.12%	25.74
3315 NIP-COKE	121,144,570	11.91%	24.51

Top Stocks by Savings

Stock	Value (JPY)	Share	Savings
6502 TOSHIBA	5,481,879,700	11.12%	3,968,500
3528 PROSPECT	549,272,300	17.01%	2,571,000
2768 SOJITZ	2,237,453,660	10.26%	1,368,430
1570 NIKKEILV	18,720,509,378	1.89%	1,257,405
4543 TERUMO	2,946,241,700	6.76%	1,202,200

- ▶ Analysis is based on SBI Japannext and Thomson Reuters data. Large Cap = TPX100, Mid Cap = TPX500 excl. TPX100, Small Cap = Section1 + Section2 excl. TPX500.
- ▶ All Japan Turnover = Japannext (J+X+U+N) + TSE (excl. Tostnet) + Chi-X (excl. Chi-Match, Chi-Select). Market Share = Japannext turnover / All Japan Turnover.
- ▶ Price Improvement (PI) and Savings (PI*volume) are calculated by comparing the execution price against the primary market's best bid for each sell or best offer for each buy at the point of execution from the taker's perspective. Reported PI is a value-weighted average. Names with weekly traded value less than 100,000,000 JPY are excluded from the rankings tables.