

Market Report for the Week of April 02, 2018

Daily Averages

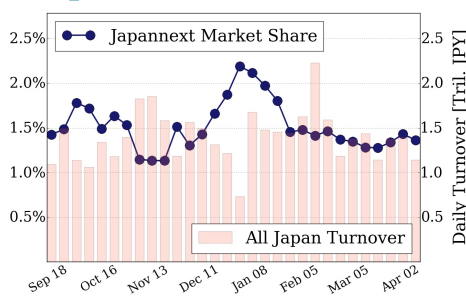
Universe	Value (JPY)	Volume	Share	PI (bps)	Symbols
All Market	83,637,708,120	66,685,498	2.80 %	4.24	2683
Large Cap	15,583,335,276	6,593,460	1.36 %	1.36	100
Mid Cap	41,329,537,972	25,461,700	4.65 %	4.02	401
Small Cap	14,879,156,826	25,909,540	3.00 %	7.50	1533
Mothers & Jasdq	4,268,101,182	6,976,200	2.35 %	8.11	556
ETFs & REITs	7,577,576,864	1,744,598	2.74 %	1.98	94

All Market
2.8 %

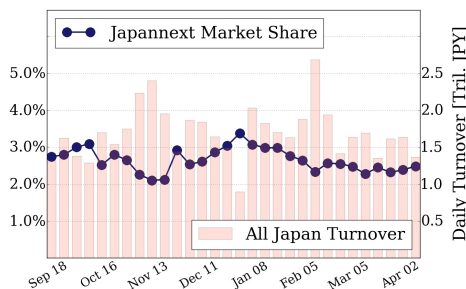
Topix 100
1.4 %

Nikkei 225
2.5 %

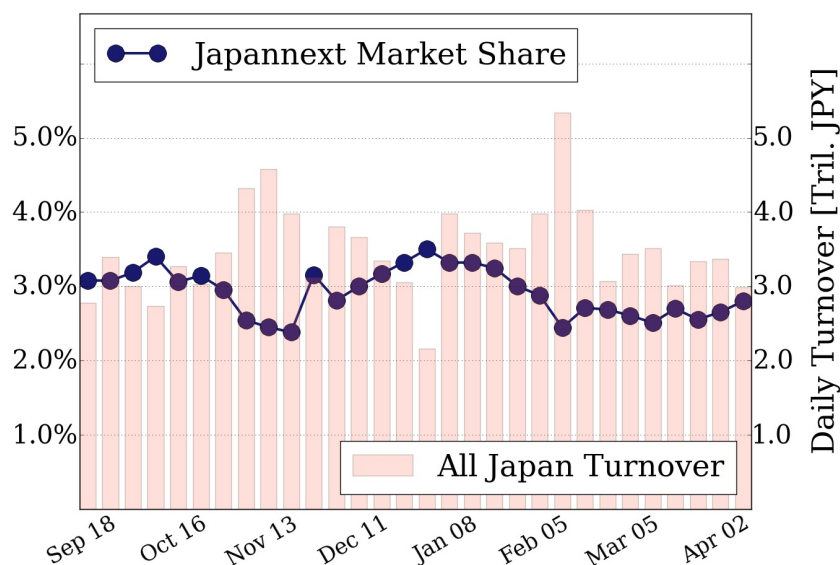
Topix 100



Nikkei 225



All Market



Top Stocks by Turnover

Stock	Value (JPY)	Share	PI (bps)
1570 NIKKEILV	15,661,086,538	1.85%	1.32
1357 NKDOUBLE	9,143,407,162	5.29%	1.91
6502 TOSHIBA	6,086,885,100	13.39%	10.22
7974 NINTEND	4,407,196,500	0.80%	1.36
8698 MONEX G	3,533,935,550	2.08%	5.20

Top Stocks by Market Share

Stock	Value (JPY)	Share	PI (bps)
3528 PROSPECT	440,673,200	15.81%	66.14
5703 NLM HD	981,451,870	15.50%	10.27
2315 CAICA	123,654,620	15.10%	58.60
6472 NTN	1,677,703,900	14.61%	6.96
3323 RECOMM	940,140,650	13.91%	12.08

Top Stocks by Price Improvement

Stock	Value (JPY)	Share	PI (bps)
3250 ADWORKS	156,495,150	2.02%	82.32
3528 PROSPECT	440,673,200	15.81%	66.14
2315 CAICA	123,654,620	15.10%	58.60
3998 SURALANT	177,486,000	3.35%	36.64
8585 OR.CORP	285,054,980	9.32%	22.54

Top Stocks by Savings

Stock	Value (JPY)	Share	Savings
6502 TOSHIBA	6,086,885,100	13.39%	4,328,600
6740 JDI	1,640,424,860	6.66%	2,422,370
3528 PROSPECT	440,673,200	15.81%	2,017,400
4689 YAHOO J	3,286,982,740	10.04%	1,626,420
2768 SOJITZ	2,193,620,070	13.61%	1,529,830

- ▶ Analysis is based on SBI Japannext and Thomson Reuters data. Large Cap = TPX100, Mid Cap = TPX500 excl. TPX100, Small Cap = Section1 + Section2 excl. TPX500.
- ▶ All Japan Turnover = Japannext (J+X+U+N) + TSE (excl. Tostnet) + Chi-X (excl. Chi-Match, Chi-Select). Market Share = Japannext turnover / All Japan Turnover.
- ▶ Price Improvement (PI) and Savings (PI*volume) are calculated by comparing the execution price against the primary market's best bid for each sell or best offer for each buy at the point of execution from the taker's perspective. Reported PI is a value-weighted average. Names with weekly traded value less than 100,000,000 JPY are excluded from the rankings tables.