

Market Report for the Week of April 09, 2018

Daily Averages

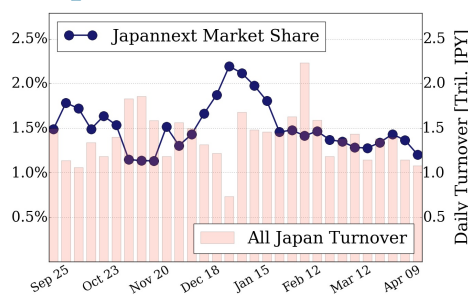
Universe	Value (JPY)	Volume	Share	PI (bps)	Symbols
All Market	78,514,594,308	62,766,655	2.67 %	4.30	2652
Large Cap	12,965,904,374	5,859,200	1.20 %	1.37	100
Mid Cap	40,830,668,182	24,382,600	4.38 %	4.02	401
Small Cap	14,700,867,056	24,558,840	2.69 %	7.24	1504
Mothers & Jasdaq	3,989,004,548	6,846,160	2.68 %	8.23	553
ETFs & REITs	6,028,150,148	1,119,855	2.56 %	2.17	94

All Market
2.7 %

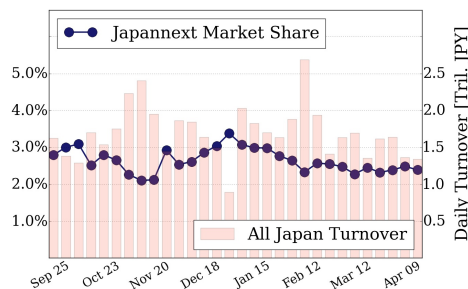
Topix 100
1.2 %

Nikkei 225
2.4 %

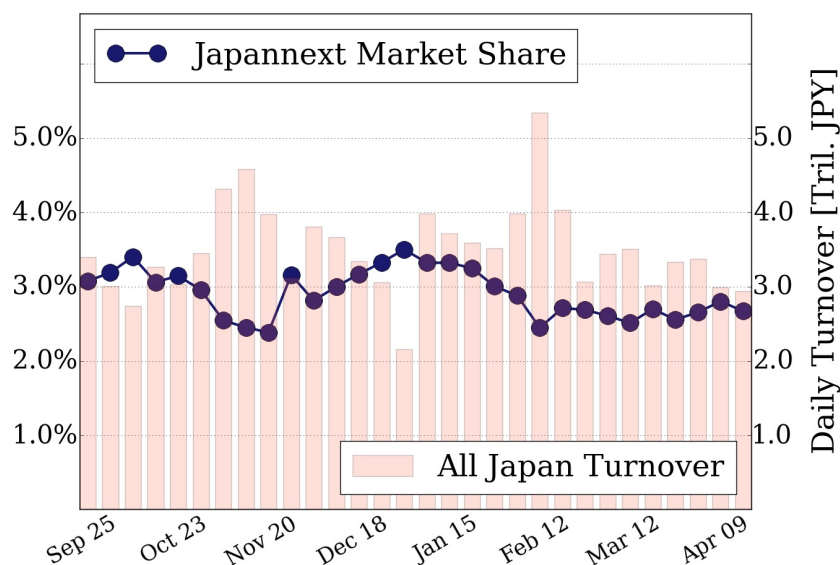
Topix 100



Nikkei 225



All Market



Top Stocks by Turnover

Stock	Value (JPY)	Share	PI (bps)
1570 NIKKEILV	12,756,378,417	1.82%	1.32
8698 MONEX G	6,863,322,980	1.41%	3.76
6506 YASKAWA	5,882,137,450	4.73%	2.88
1357 NKDOUBLE	4,904,011,357	3.83%	2.08
4689 YAHOO J	4,746,083,970	11.07%	7.67

Top Stocks by Market Share

Stock	Value (JPY)	Share	PI (bps)
8918 LAND	272,992,230	19.76%	283.69
6663 TAIYOIND	116,854,360	15.07%	0.00
3528 PROSPECT	190,480,900	14.02%	67.00
3323 RECOMM	316,922,330	12.76%	12.67
9831 YAMDADK	1,745,057,500	12.73%	5.04

Top Stocks by Price Improvement

Stock	Value (JPY)	Share	PI (bps)
8918 LAND	272,992,230	19.76%	283.69
6803 TEAC	120,349,200	1.07%	96.04
3528 PROSPECT	190,480,900	14.02%	67.00
3250 ADWORKS	110,369,860	1.43%	58.13
1919 YMD SXL	106,259,900	3.09%	27.30

Top Stocks by Savings

Stock	Value (JPY)	Share	Savings
8918 LAND	272,992,230	19.76%	4,645,270
4689 YAHOO J	4,746,083,970	11.07%	2,844,460
6502 TOSHIBA	3,577,382,900	12.59%	2,770,000
6740 JDI	1,018,658,260	7.56%	1,873,620
9501 TEPCOHD	2,305,419,850	12.70%	1,405,790

- ▶ Analysis is based on SBI Japannext and Thomson Reuters data. Large Cap = TPX100, Mid Cap = TPX500 excl. TPX100, Small Cap = Section1 + Section2 excl. TPX500.
- ▶ All Japan Turnover = Japannext (J+X+U+N) + TSE (excl. Tostnet) + Chi-X (excl. Chi-Match, Chi-Select). Market Share = Japannext turnover / All Japan Turnover.
- ▶ Price Improvement (PI) and Savings (PI*volume) are calculated by comparing the execution price against the primary market's best bid for each sell or best offer for each buy at the point of execution from the taker's perspective. Reported PI is a value-weighted average. Names with weekly traded value less than 100,000,000 JPY are excluded from the rankings tables.