

Market Report for the Week of April 16, 2018

Daily Averages

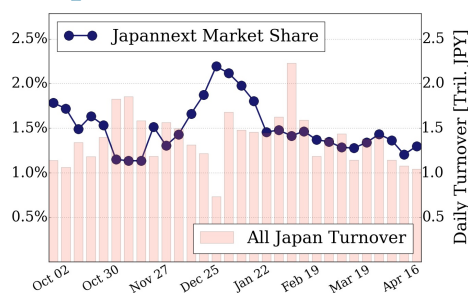
Universe	Value (JPY)	Volume	Share	PI (bps)	Symbols
All Market	83,128,309,089	68,410,789	2.88 %	4.18	2606
Large Cap	13,518,092,388	5,945,880	1.30 %	1.29	100
Mid Cap	43,440,379,388	25,617,100	4.86 %	3.79	401
Small Cap	16,828,736,048	28,905,680	2.90 %	7.29	1476
Mothers & Jasdq	3,730,569,348	7,036,720	2.54 %	8.53	536
ETFs & REITs	5,610,531,917	905,409	2.54 %	2.13	94

All Market
2.9 %

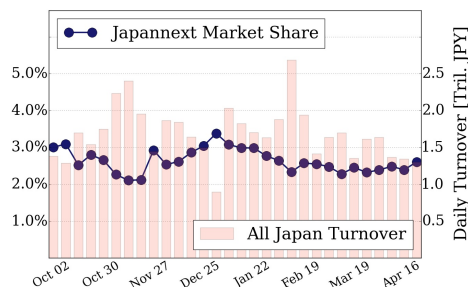
Topix 100
1.3 %

Nikkei 225
2.6 %

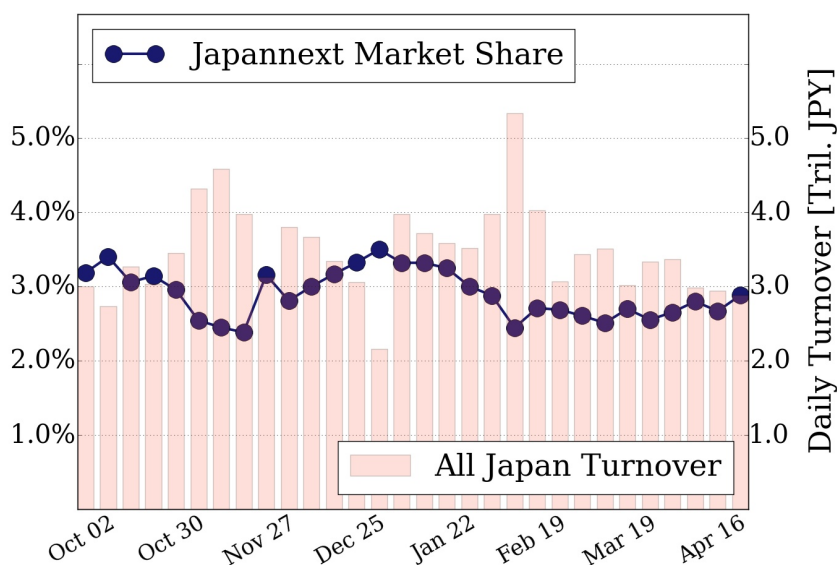
Topix 100



Nikkei 225



All Market



Top Stocks by Turnover

Stock	Value (JPY)	Share	PI (bps)
8698 MONEX G	10,307,281,820	1.89%	3.89
1570 NIKKEILV	9,790,351,246	1.52%	1.20
6502 TOSHIBA	5,904,534,800	12.63%	9.00
6723 RENESAS	4,465,353,850	3.04%	2.32
6506 YASKAWA	4,078,166,500	4.37%	2.89

Top Stocks by Market Share

Stock	Value (JPY)	Share	PI (bps)
1580 225 BEAR	757,714,800	40.45%	0.00
8918 LAND	325,378,290	23.99%	330.02
3461 PALMA	106,557,800	23.44%	0.00
6345 AITI	193,402,260	18.25%	7.34
3528 PROSPECT	163,314,100	17.23%	69.26

Top Stocks by Price Improvement

Stock	Value (JPY)	Share	PI (bps)
8918 LAND	325,378,290	23.99%	330.02
3250 ADWORKS	118,588,100	2.03%	76.81
3528 PROSPECT	163,314,100	17.23%	69.26
1757 CREA HD	187,712,550	7.42%	64.83
2315 CAICA	236,862,250	10.31%	52.57

Top Stocks by Savings

Stock	Value (JPY)	Share	Savings
8918 LAND	325,378,290	23.99%	8,763,610
6502 TOSHIBA	5,904,534,800	12.63%	4,202,100
8698 MONEX G	10,307,281,820	1.89%	1,907,050
9501 TEPCHOHD	3,449,120,110	9.21%	1,646,540
4689 YAHOO J	3,151,182,500	8.04%	1,610,370

- ▶ Analysis is based on SBI Japannext and Thomson Reuters data. Large Cap = TPX100, Mid Cap = TPX500 excl. TPX100, Small Cap = Section1 + Section2 excl. TPX500.
- ▶ All Japan Turnover = Japannext (J+X+U+N) + TSE (excl. Tostnet) + Chi-X (excl. Chi-Match, Chi-Select). Market Share = Japannext turnover / All Japan Turnover.
- ▶ Price Improvement (PI) and Savings (PI*volume) are calculated by comparing the execution price against the primary market's best bid for each sell or best offer for each buy at the point of execution from the taker's perspective. Reported PI is a value-weighted average. Names with weekly traded value less than 100,000,000 JPY are excluded from the rankings tables.