

Market Report for the Week of April 23, 2018

Daily Averages

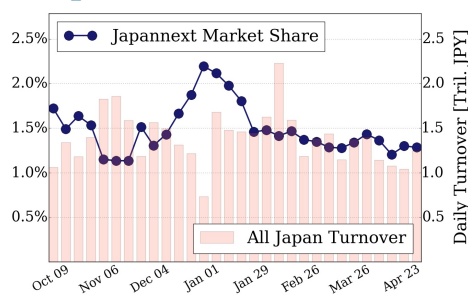
Universe	Value (JPY)	Volume	Share	PI (bps)	Symbols
All Market	87,318,952,472	70,223,304	2.80 %	4.11	2619
Large Cap	16,014,576,894	6,091,840	1.28 %	1.30	100
Mid Cap	46,453,612,072	26,879,660	4.75 %	3.88	401
Small Cap	16,258,723,960	28,541,960	2.89 %	7.08	1491
Mothers & Jasdaq	3,825,671,612	8,020,680	2.83 %	8.19	537
ETFs & REITs	4,766,367,934	689,164	2.44 %	1.82	91

All Market
2.8 %

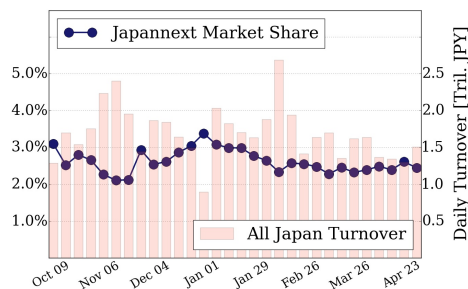
Topix 100
1.3 %

Nikkei 225
2.4 %

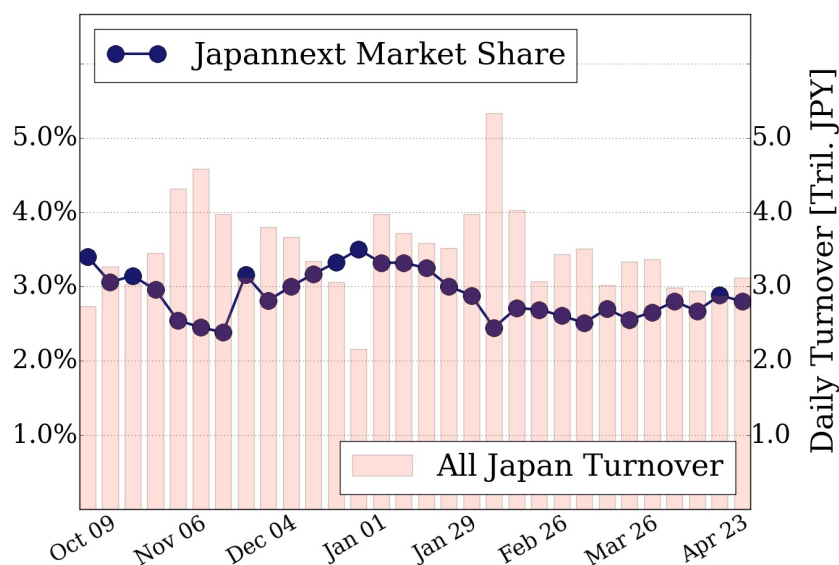
Topix 100



Nikkei 225



All Market



Top Stocks by Turnover

Stock	Value (JPY)	Share	PI (bps)
1570 NIKKEILV	9,513,611,529	1.58%	1.13
8698 MONEX G	8,490,534,420	2.52%	4.39
7974 NINTEND	7,141,521,500	1.23%	1.52
6502 TOSHIBA	5,228,673,800	11.98%	10.71
6723 RENESAS	4,817,452,420	3.80%	2.43

Top Stocks by Market Share

Stock	Value (JPY)	Share	PI (bps)
2370 MEDINET	125,699,790	25.86%	18.85
8918 LAND	375,622,530	24.94%	204.05
3647 GTHREEHD	141,276,340	13.70%	17.18
6628 ONKYO	217,020,550	13.68%	16.01
2315 CAICA	124,337,290	12.78%	61.17

Top Stocks by Price Improvement

Stock	Value (JPY)	Share	PI (bps)
8918 LAND	375,622,530	24.94%	204.05
1757 CREA HD	104,964,120	12.15%	90.46
2315 CAICA	124,337,290	12.78%	61.17
1919 YMD SXL	111,264,700	5.16%	35.47
7612 NUTS	300,028,000	5.60%	20.55

Top Stocks by Savings

Stock	Value (JPY)	Share	Savings
8918 LAND	375,622,530	24.94%	6,557,280
6502 TOSHIBA	5,228,673,800	11.98%	4,076,600
4689 YAHOO J	4,706,875,850	10.48%	2,850,320
6740 JDI	1,579,607,650	11.55%	2,200,450
9501 TEPCOHD	4,124,419,790	7.18%	1,894,450

- ▶ Analysis is based on SBI Japannext and Thomson Reuters data. Large Cap = TPX100, Mid Cap = TPX500 excl. TPX100, Small Cap = Section1 + Section2 excl. TPX500.
- ▶ All Japan Turnover = Japannext (J+X+U+N) + TSE (excl. Tostnet) + Chi-X (excl. Chi-Match, Chi-Select). Market Share = Japannext turnover / All Japan Turnover.
- ▶ Price Improvement (PI) and Savings (PI*volume) are calculated by comparing the execution price against the primary market's best bid for each sell or best offer for each buy at the point of execution from the taker's perspective. Reported PI is a value-weighted average. Names with weekly traded value less than 100,000,000 JPY are excluded from the rankings tables.