

Market Report for the Week of April 30, 2018

Daily Averages

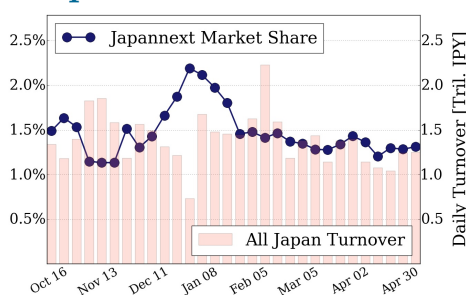
Universe	Value (JPY)	Volume	Share	PI (bps)	Symbols
All Market	92,922,521,222	73,442,050	3.03 %	4.08	2646
Large Cap	16,401,808,210	7,022,950	1.31 %	1.29	100
Mid Cap	51,958,036,055	32,002,700	5.19 %	4.07	401
Small Cap	17,286,549,265	27,975,950	3.13 %	6.15	1512
Mothers & Jasdaq	3,237,260,495	5,860,800	2.85 %	7.41	543
ETFs & REITs	4,038,867,197	579,650	2.68 %	1.94	90

All Market
3.0 %

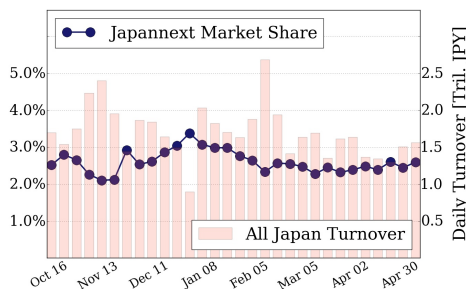
Topix 100
1.3 %

Nikkei 225
2.6 %

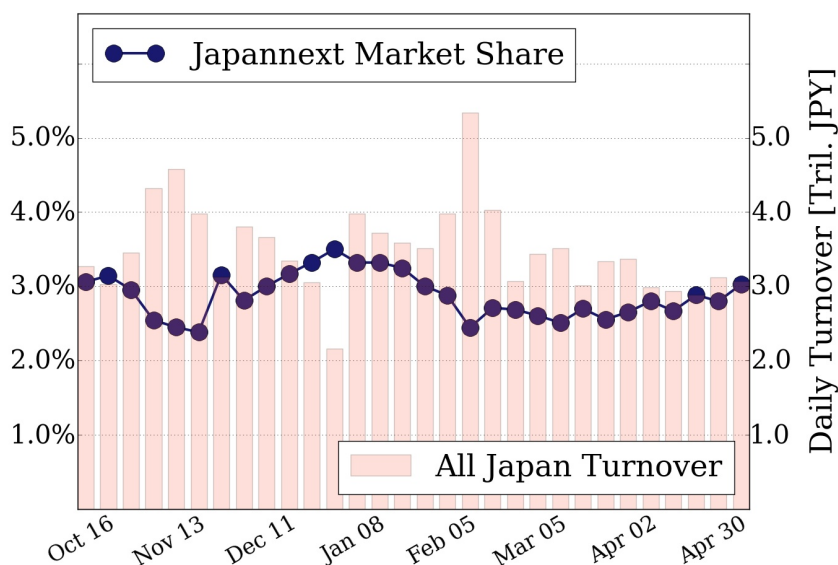
Topix 100



Nikkei 225



All Market



Top Stocks by Turnover

Stock	Value (JPY)	Share	PI (bps)
8698 MONEX G	3,812,102,940	2.07%	3.33
4689 YAHOO J	3,082,086,630	7.36%	9.81
1570 NIKKEILV	2,639,705,674	1.63%	1.24
9501 TEPCOHD	2,252,628,560	5.35%	5.43
6502 TOSHIBA	1,911,673,300	15.25%	9.30

Top Stocks by Market Share

Stock	Value (JPY)	Share	PI (bps)
6502 TOSHIBA	1,911,673,300	15.25%	9.30
8572 ACOM	328,156,030	15.22%	5.64
8963 INV	349,770,355	14.87%	4.38
8515 AIFUL	402,950,650	14.61%	8.61
5703 NLM HD	313,613,790	14.48%	10.08

Top Stocks by Price Improvement

Stock	Value (JPY)	Share	PI (bps)
8918 LAND	150,496,060	13.66%	314.17
6740 JDI	468,440,730	11.64%	21.35
6773 PIONEER	116,364,390	12.24%	17.55
3652 DMP	214,617,300	3.40%	13.66
3765 GUNGHO	1,167,540,390	11.58%	10.67

Top Stocks by Savings

Stock	Value (JPY)	Share	Savings
4689 YAHOO J	3,082,086,630	7.36%	2,582,790
8918 LAND	150,496,060	13.66%	1,860,320
6502 TOSHIBA	1,911,673,300	15.25%	1,384,200
3765 GUNGHO	1,167,540,390	11.58%	991,960
6740 JDI	468,440,730	11.64%	795,990

- ▶ Analysis is based on SBI Japannext and Thomson Reuters data. Large Cap = TPX100, Mid Cap = TPX500 excl. TPX100, Small Cap = Section1 + Section2 excl. TPX500.
- ▶ All Japan Turnover = Japannext (J+X+U+N) + TSE (excl. Tostnet) + Chi-X (excl. Chi-Match, Chi-Select). Market Share = Japannext turnover / All Japan Turnover.
- ▶ Price Improvement (PI) and Savings (PI*volume) are calculated by comparing the execution price against the primary market's best bid for each sell or best offer for each buy at the point of execution from the taker's perspective. Reported PI is a value-weighted average. Names with weekly traded value less than 100,000,000 JPY are excluded from the rankings tables.