

Market Report for the Week of May 07, 2018

Daily Averages

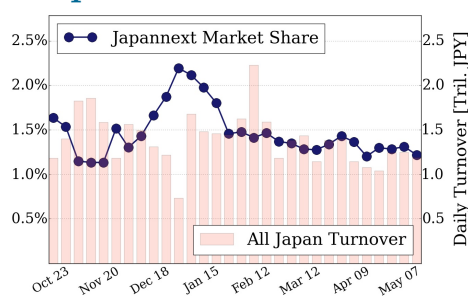
Universe	Value (JPY)	Volume	Share	PI (bps)	Symbols
All Market	86,754,554,453	69,280,853	2.74 %	4.25	2657
Large Cap	14,520,787,242	5,888,420	1.22 %	1.30	100
Mid Cap	47,794,984,726	30,649,020	4.51 %	4.06	401
Small Cap	16,451,235,036	26,634,340	2.68 %	7.06	1514
Mothers & Jasdaq	3,395,585,120	5,451,640	2.64 %	7.54	551
ETFs & REITs	4,591,962,329	657,433	2.59 %	2.14	91

All Market
2.7 %

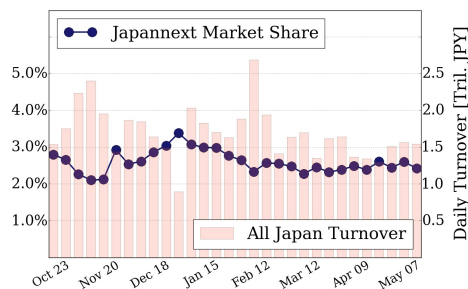
Topix 100
1.2 %

Nikkei 225
2.4 %

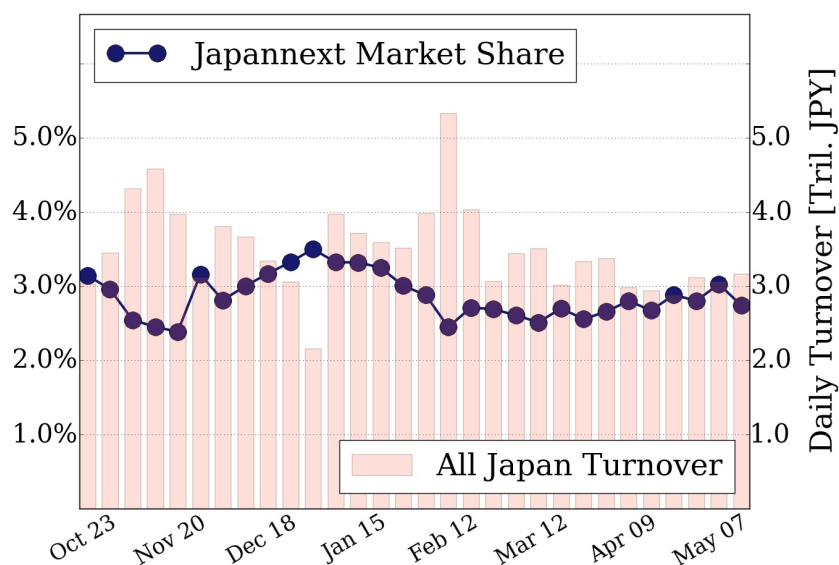
Topix 100



Nikkei 225



All Market



Top Stocks by Turnover

Stock	Value (JPY)	Share	PI (bps)
8698 MONEX G	9,951,418,700	2.29%	3.23
1570 NIKKEILV	7,956,149,227	1.57%	1.15
4689 YAHOO J	7,829,752,240	11.81%	8.55
9501 TEPCOHD	6,871,558,560	4.83%	5.31
6723 RENESAS	4,842,746,000	8.49%	2.30

Top Stocks by Market Share

Stock	Value (JPY)	Share	PI (bps)
6773 PIONEER	312,207,010	14.89%	17.57
8918 LAND	201,739,140	14.74%	374.90
8201 SAGMIGHD	154,027,400	13.92%	20.61
3528 PROSPECT	133,892,600	13.73%	59.77
6502 TOSHIBA	4,603,297,200	13.67%	10.31

Top Stocks by Price Improvement

Stock	Value (JPY)	Share	PI (bps)
8918 LAND	201,739,140	14.74%	374.90
3528 PROSPECT	133,892,600	13.73%	59.77
8925 ARDEPRO	123,957,520	11.61%	32.28
6740 JDI	1,576,238,470	12.31%	25.18
8704 TRADERS	124,340,320	8.96%	24.57

Top Stocks by Savings

Stock	Value (JPY)	Share	Savings
8918 LAND	201,739,140	14.74%	5,767,030
4689 YAHOO J	7,829,752,240	11.81%	5,561,230
6502 TOSHIBA	4,603,297,200	13.67%	3,991,400
6740 JDI	1,576,238,470	12.31%	2,951,790
2768 SOJITZ	4,030,053,240	8.71%	2,367,930

- ▶ Analysis is based on SBI Japannext and Thomson Reuters data. Large Cap = TPX100, Mid Cap = TPX500 excl. TPX100, Small Cap = Section1 + Section2 excl. TPX500.
- ▶ All Japan Turnover = Japannext (J+X+U+N) + TSE (excl. Tostnet) + Chi-X (excl. Chi-Match, Chi-Select). Market Share = Japannext turnover / All Japan Turnover.
- ▶ Price Improvement (PI) and Savings (PI*volume) are calculated by comparing the execution price against the primary market's best bid for each sell or best offer for each buy at the point of execution from the taker's perspective. Reported PI is a value-weighted average. Names with weekly traded value less than 100,000,000 JPY are excluded from the rankings tables.