

Market Report for the Week of May 14, 2018

Daily Averages

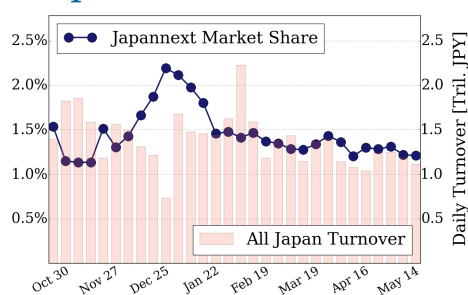
Universe	Value (JPY)	Volume	Share	PI (bps)	Symbols
All Market	89,686,886,536	75,340,441	2.95 %	4.53	2689
Large Cap	13,501,091,306	6,407,940	1.21 %	1.26	100
Mid Cap	49,709,437,370	29,977,580	5.08 %	4.14	401
Small Cap	18,514,228,816	31,313,340	3.01 %	7.63	1539
Mothers & Jasdaq	4,269,835,148	7,078,900	2.45 %	7.91	561
ETFs & REITs	3,692,293,896	562,681	2.39 %	2.07	88

All Market
3.0 %

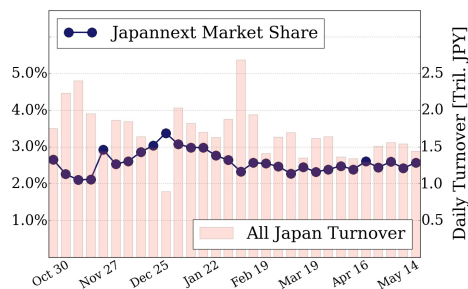
Topix 100
1.2 %

Nikkei 225
2.6 %

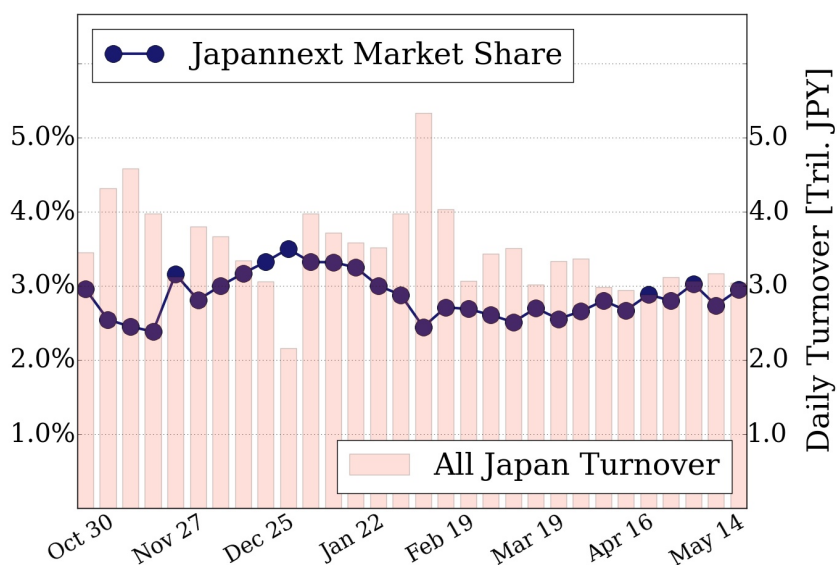
Topix 100



Nikkei 225



All Market



Top Stocks by Turnover

Stock	Value (JPY)	Share	PI (bps)
6502 TOSHIBA	10,603,271,100	13.24%	10.56
1570 NIKKEILV	6,510,705,981	1.55%	1.02
8698 MONEX G	6,178,097,600	2.46%	3.43
9501 TEPCOHD	5,115,384,080	5.27%	5.21
3825 REMIX	4,990,281,870	7.52%	4.11

Top Stocks by Market Share

Stock	Value (JPY)	Share	PI (bps)
8201 SAGMIGHD	131,116,400	26.47%	31.84
3906 ALBERT	265,831,540	16.17%	0.38
3765 GUNGHO	961,039,200	15.92%	10.64
2315 CAICA	154,012,110	15.47%	59.72
3315 NIP-COKE	173,619,180	13.94%	24.53

Top Stocks by Price Improvement

Stock	Value (JPY)	Share	PI (bps)
8918 LAND	177,217,920	12.06%	319.59
3528 PROSPECT	147,350,800	12.70%	80.23
2315 CAICA	154,012,110	15.47%	59.72
8201 SAGMIGHD	131,116,400	26.47%	31.84
8704 TRADERS	132,806,730	10.40%	24.72

Top Stocks by Savings

Stock	Value (JPY)	Share	Savings
6502 TOSHIBA	10,603,271,100	13.24%	9,546,300
8918 LAND	177,217,920	12.06%	5,100,030
4689 YAHOO J	4,059,434,610	12.82%	2,665,350
6740 JDI	1,494,386,720	8.97%	2,567,160
4324 DENTSU	4,659,279,650	10.70%	2,526,000

- ▶ Analysis is based on SBI Japannext and Thomson Reuters data. Large Cap = TPX100, Mid Cap = TPX500 excl. TPX100, Small Cap = Section1 + Section2 excl. TPX500.
- ▶ All Japan Turnover = Japannext (J+X+U+N) + TSE (excl. Tostnet) + Chi-X (excl. Chi-Match, Chi-Select). Market Share = Japannext turnover / All Japan Turnover.
- ▶ Price Improvement (PI) and Savings (PI*volume) are calculated by comparing the execution price against the primary market's best bid for each sell or best offer for each buy at the point of execution from the taker's perspective. Reported PI is a value-weighted average. Names with weekly traded value less than 100,000,000 JPY are excluded from the rankings tables.