

Market Report for the Week of May 21, 2018

Daily Averages

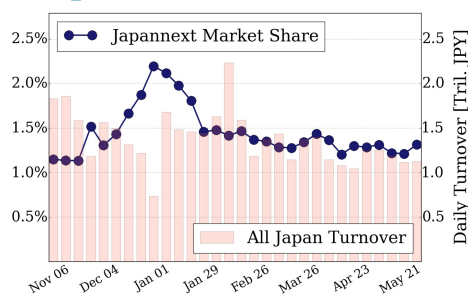
Universe	Value (JPY)	Volume	Share	PI (bps)	Symbols
All Market	89,517,893,305	73,701,415	3.09 %	4.21	2669
Large Cap	14,741,118,568	6,589,540	1.31 %	1.25	100
Mid Cap	48,246,488,598	29,578,480	5.44 %	4.07	401
Small Cap	16,445,921,162	27,689,140	3.20 %	6.92	1529
Mothers & Jasdaq	4,687,167,902	8,758,020	2.65 %	7.23	551
ETFs & REITs	5,397,197,075	1,086,235	2.70 %	1.82	88

All Market
3.1 %

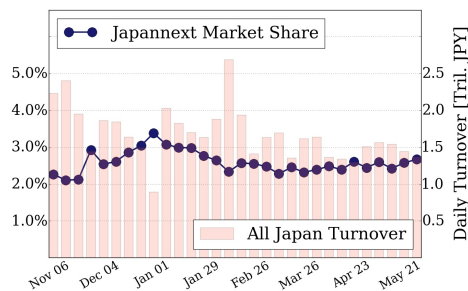
Topix 100
1.3 %

Nikkei 225
2.7 %

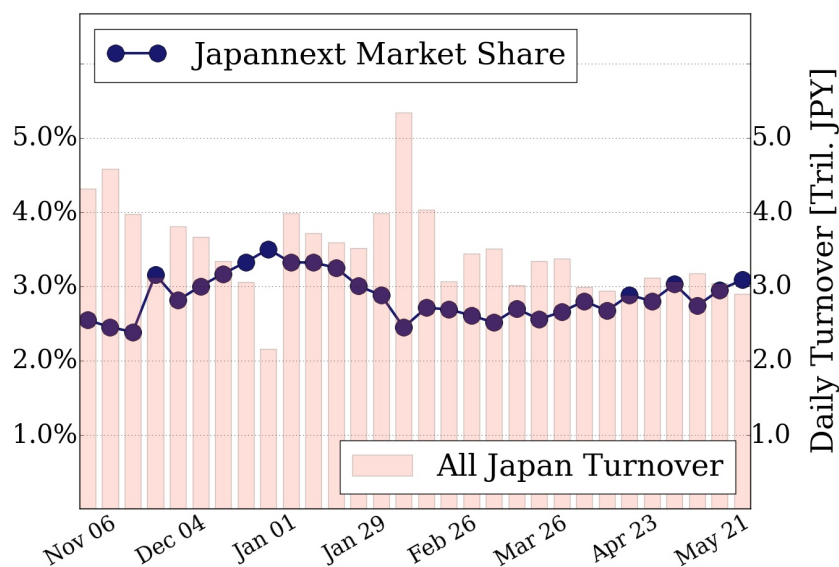
Topix 100



Nikkei 225



All Market



Top Stocks by Turnover

Stock	Value (JPY)	Share	PI (bps)
1570 NIKKEILV	9,559,842,292	1.69%	1.11
6502 TOSHIBA	8,352,484,100	11.17%	9.83
8698 MONEX G	6,303,167,090	2.54%	3.90
7974 NINTEND	4,695,395,500	1.01%	1.50
4689 YAHOO J	4,439,810,990	11.99%	7.89

Top Stocks by Market Share

Stock	Value (JPY)	Share	PI (bps)
3528 PROSPECT	127,834,000	15.62%	69.62
1813 FUDO TTR	153,605,710	14.53%	14.99
1360 NKBEAR-2	2,225,973,470	14.30%	0.80
8714 SENSUIK	215,945,600	13.73%	7.18
8359 82-BANK	1,115,597,760	13.63%	6.33

Top Stocks by Price Improvement

Stock	Value (JPY)	Share	PI (bps)
8918 LAND	187,028,350	9.84%	276.70
1757 CREA HD	167,651,600	9.53%	71.64
3528 PROSPECT	127,834,000	15.62%	69.62
6636 SORGMJHD	143,821,260	11.51%	24.51
4347 BR-MEDIA	132,080,120	5.12%	24.11

Top Stocks by Savings

Stock	Value (JPY)	Share	Savings
6502 TOSHIBA	8,352,484,100	11.17%	6,454,800
8918 LAND	187,028,350	9.84%	4,636,910
4689 YAHOO J	4,439,810,990	11.99%	2,984,040
2768 SOJITZ	3,289,853,540	11.02%	1,979,880
3765 GUNGHO	1,982,951,620	13.58%	1,525,900

- ▶ Analysis is based on SBI Japannext and Thomson Reuters data. Large Cap = TPX100, Mid Cap = TPX500 excl. TPX100, Small Cap = Section1 + Section2 excl. TPX500.
- ▶ All Japan Turnover = Japannext (J+X+U+N) + TSE (excl. Tostnet) + Chi-X (excl. Chi-Match, Chi-Select). Market Share = Japannext turnover / All Japan Turnover.
- ▶ Price Improvement (PI) and Savings (PI*volume) are calculated by comparing the execution price against the primary market's best bid for each sell or best offer for each buy at the point of execution from the taker's perspective. Reported PI is a value-weighted average. Names with weekly traded value less than 100,000,000 JPY are excluded from the rankings tables.