

# Market Report for the Week of July 23, 2018

## Daily Averages

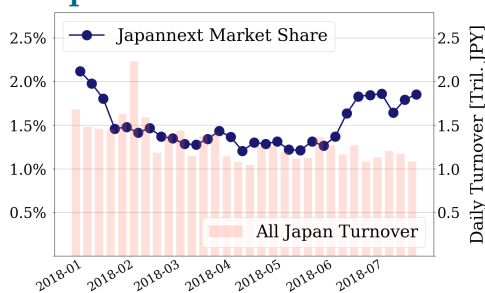
Universe	Value (JPY)	Volume	Share	PI (bps)	Symbols
All Market	95,839,593,959	72,661,305	3.65 %	4.31	2736
Large Cap	20,044,422,852	8,226,760	1.85 %	1.47	100
Mid Cap	48,697,933,238	29,162,780	6.16 %	4.09	401
Small Cap	18,198,081,672	27,450,940	4.17 %	7.21	1616
Mothers & Jasdaq	3,413,705,274	6,754,160	2.65 %	9.38	531
ETFs & REITs	5,485,450,923	1,066,665	2.94 %	2.34	88

All Market  
**3.6 %**  
Topix 100

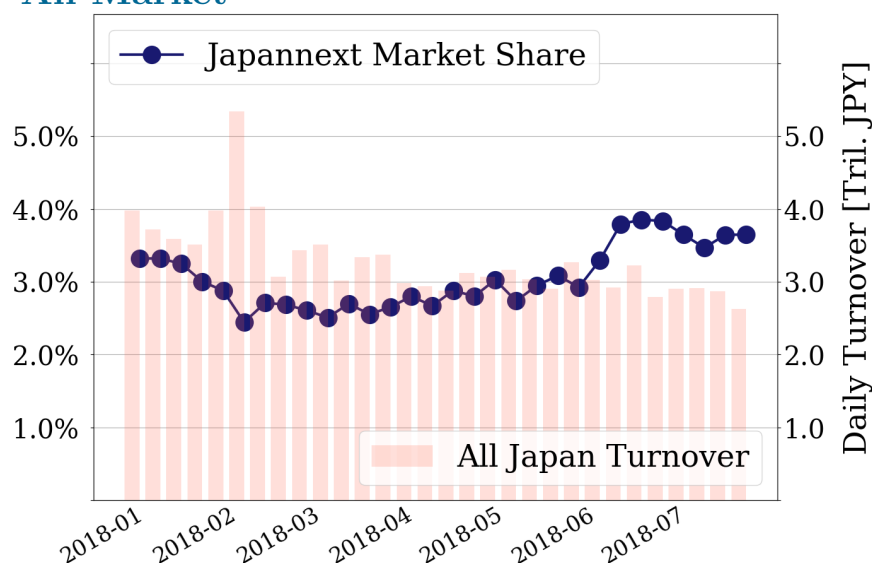
**1.9 %**  
Nikkei 225

**3.1 %**

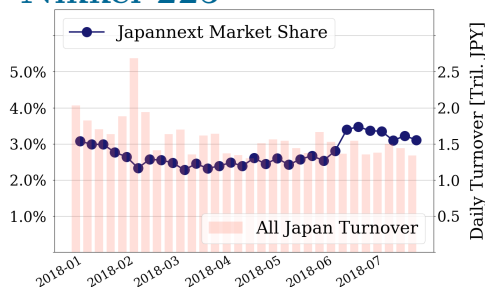
### Topix 100



### All Market



### Nikkei 225



## Top Stocks by Turnover

Stock	Value (JPY)	Share	PI (bps)
1570 NIKKEILV	6,453,169,095	1.32%	1.00
6502 TOSHIBA	5,564,481,000	17.12%	11.09
6506 YASKAWA	5,460,647,000	9.03%	4.61
4004 SHOWDEN	5,454,333,600	10.20%	5.84
1357 NKDOUBLE	5,139,754,444	6.53%	1.94

## Top Stocks by Market Share

Stock	Value (JPY)	Share	PI (bps)
3528 PROSPECT	217,698,400	18.36%	87.67
6740 JDI	1,867,267,340	18.31%	21.21
8918 LAND	211,002,470	17.93%	330.42
6502 TOSHIBA	5,564,481,000	17.12%	11.09
4005 SMICHEM	4,682,642,500	16.60%	6.18

## Top Stocks by Price Improvement

Stock	Value (JPY)	Share	PI (bps)
8918 LAND	211,002,470	17.93%	330.42
3528 PROSPECT	217,698,400	18.36%	87.67
2315 CAICA	101,179,840	12.49%	63.77
4394 EXMOTION	137,847,250	1.55%	45.00
3491 GA TECH	287,929,100	2.21%	26.56

## Top Stocks by Savings

Stock	Value (JPY)	Share	Savings
8918 LAND	211,002,470	17.93%	6,501,370
6502 TOSHIBA	5,564,481,000	17.12%	5,360,800
4689 YAHOO J	4,593,445,070	15.43%	3,094,070
6740 JDI	1,867,267,340	18.31%	2,714,650
4004 SHOWDEN	5,454,333,600	10.20%	2,433,700

- ▶ Analysis is based on SBI Japannext and Thomson Reuters data. Large Cap = TPX100, Mid Cap = TPX500 excl. TPX100, Small Cap = Section1 + Section2 excl. TPX500.
- ▶ All Japan Turnover = Japannext (J+X+U+N) + TSE (excl. Tostnet) + Chi-X (excl. Chi-Match, Chi-Select). Market Share = Japannext turnover / All Japan Turnover.
- ▶ Price Improvement (PI) and Savings (PI\*volume) are calculated by comparing the execution price against the primary market's best bid for each sell or best offer for each buy at the point of execution from the taker's perspective. Reported PI is a value-weighted average. Names with weekly traded value less than 100,000,000 JPY are excluded from the rankings tables.

# Top Stocks by Universe

## Topix 100

Stock	Value (JPY)	Share	PI (bps)
8411 MIZUHO	2,066,683,620	1.37%	5.18
9020 JR EAST	1,137,298,600	4.11%	1.58
6861 KEYENCE	1,300,079,000	1.65%	2.14
9433 KDDI	1,325,203,160	2.2%	1.91
7201 NISSAN	2,485,285,690	4.54%	1.31
4063 SINETUC	2,683,166,200	3.42%	1.52
6367 DAIKINI	1,539,479,720	3.39%	1.51
2914 JT	1,640,529,840	1.87%	1.84
6301 KOMATSU	1,992,822,100	1.85%	1.80
7974 NINTEND	4,349,037,000	1.56%	1.89

## Topix Mid400

Stock	Value (JPY)	Share	PI (bps)
3765 GUNGHO	1,091,967,480	11.92%	11.73
4689 YAHOO J	4,593,445,070	15.43%	8.32
8410 SEVEN BK	1,473,008,060	13.1%	9.91
4005 SMICHEM	4,682,642,500	16.6%	6.18
7167 MEBUKIFG	998,406,710	13.99%	7.85
2768 SOJITZ	2,585,286,670	13.14%	8.38
8515 AIFUL	981,461,470	12.2%	8.76
8359 82-BANK	843,629,450	13.91%	7.34
7259 AISIN	2,539,625,450	14.91%	6.31
7532 DONQUIHD	2,127,734,100	15.11%	6.14

## Small

Stock	Value (JPY)	Share	PI (bps)
8918 LAND	211,002,470	17.93%	330.42
6740 JDI	1,867,267,340	18.31%	21.21
8585 OR.CORP	333,149,860	14.62%	19.89
6773 PIONEER	203,262,380	12.4%	20.33
8714 SENSUIK	222,422,390	13.39%	7.74
8897 TAKARAL	129,712,650	12.92%	7.23
8703 KABU.COM	257,785,640	12.37%	7.48
7246 PRESSKG	201,879,330	12.27%	4.06
9412 SKYPER J	300,988,620	11.51%	5.39
9424 JPN-COMM	245,908,890	9.36%	17.64

## Mothers

Stock	Value (JPY)	Share	PI (bps)
4394 EXMOTION	137,847,250	1.55%	45.00
3491 GA TECH	287,929,100	2.21%	26.56
2160 GNI	155,953,650	8.12%	10.19
4597 SOLASIA	460,163,440	8.98%	9.18
6027 BENG04CM	262,621,950	4.69%	12.58
4588 ONCOLYS	186,965,770	3.29%	14.30
3646 EKITAN	144,467,640	3.43%	13.09
6069 TRENDERS	137,682,150	4.95%	9.18
3966 UZABASE	192,542,450	5.12%	8.74
4571 NANOCARI	161,156,680	5.04%	7.76

## JASDAQ

Stock	Value (JPY)	Share	PI (bps)
2315 CAICA	101,179,840	12.49%	63.77
7612 NUTS	36,473,900	8.93%	30.96
6494 NFK-HD	63,794,200	10.24%	26.46
4582 SYMBIO	72,115,540	13.84%	17.14
9973 KOZOSUSI	66,568,200	9.21%	22.80
4978 REPROCEL	105,673,670	12.99%	13.63
7836 AVIX	50,230,880	8.0%	18.54
3236 PROPERST	50,651,090	10.68%	14.81
3266 FUNDCREG	46,632,540	7.74%	16.83
4712 KEYH	179,671,990	7.8%	16.32

## Second Section

Stock	Value (JPY)	Share	PI (bps)
9318 ASIADAVE	34,985,310	10.6%	332.23
3528 PROSPECT	217,698,400	18.36%	87.67
8925 ARDEPRO	38,695,130	14.05%	49.37
3647 GTHREEHD	38,204,520	13.02%	21.76
6835 ALLIEDHD	175,875,440	11.16%	17.88
5940 FUJSASH	111,467,420	8.9%	21.02
6502 TOSHIBA	5,564,481,000	17.12%	11.09
5955 YAMASNA	27,692,940	7.56%	19.18
7831 WELLCOHD	48,279,510	4.87%	22.91
3113 OAK	81,490,340	8.59%	15.09

## ETFs & REITs

Stock	Value (JPY)	Share	PI (bps)
3295 HULIC RE	339,517,280	12.99%	3.55
8952 JRE	857,426,700	8.87%	4.80
8985 JHR	618,399,480	10.74%	3.40
8972 KENEDIXO	351,171,700	7.22%	5.57
8951 NBF	938,474,200	8.7%	4.17
1365 DW 225LV	395,646,284	11.27%	1.91
3281 GLP	352,093,000	7.84%	2.27
8976 DAIWAOF	281,343,500	4.93%	3.67
3279 API	268,386,750	3.88%	4.54
1458 RK 225LV	427,072,011	6.4%	2.15

- ▶ Best stocks are selected based on a combined score of turnover, market share and price improvement, and are listed here in order to illustrate a sample of stocks that trading on JNX venues can deliver benefits to our clients.
- ▶ The weights used in choosing the best stocks depend on the universe.