

Market Report for the Week of August 13, 2018

Daily Averages

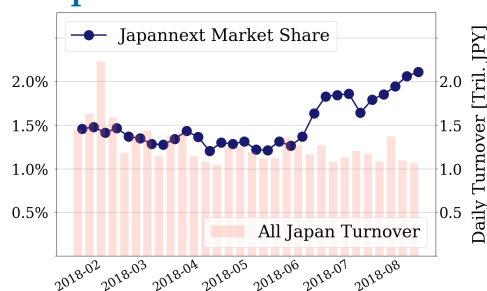
Universe	Value (JPY)	Volume	Share	PI (bps)	Symbols
All Market	106,175,472,863	83,945,154	3.84 %	4.34	2796
Large Cap	22,463,379,862	9,126,840	2.11 %	1.54	100
Mid Cap	51,537,891,928	31,235,440	5.94 %	3.94	401
Small Cap	19,197,521,818	31,824,840	4.36 %	7.78	1630
Mothers & Jasdaq	4,851,743,922	9,799,940	3.21 %	11.39	570
ETFs & REITs	8,124,935,333	1,958,094	3.40 %	2.01	94

All Market
3.8 %
Topix 100

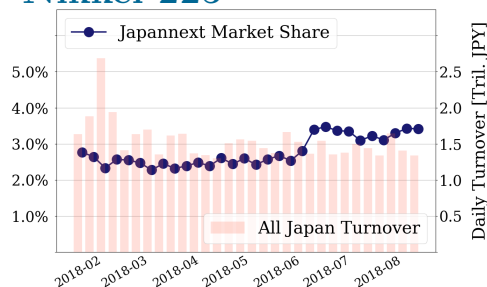
2.1 %
Nikkei 225

3.4 %

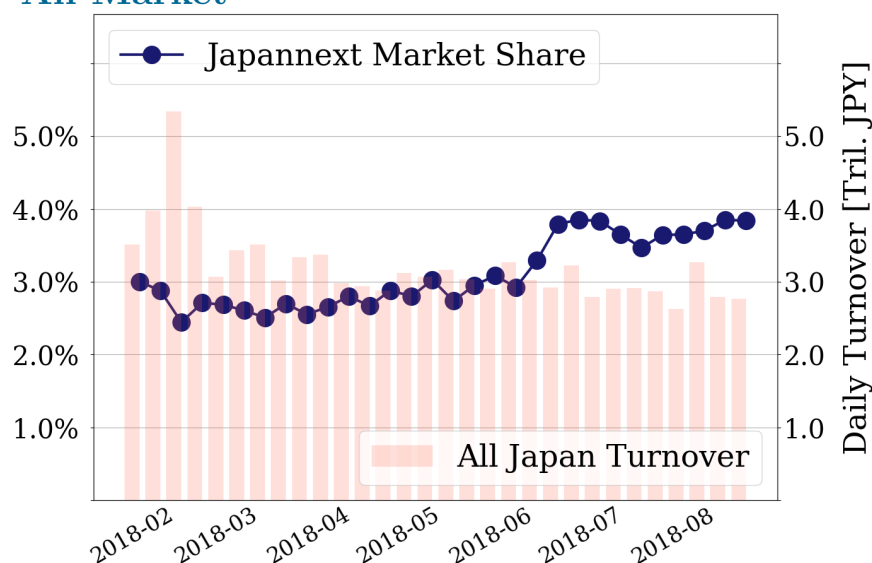
Topix 100



Nikkei 225



All Market



Top Stocks by Turnover

Stock	Value (JPY)	Share	PI (bps)
1570 NIKKEILV	11,792,090,582	1.74%	1.01
1357 NKDOUBLE	9,592,486,395	6.75%	1.77
4004 SHOWDEN	7,570,602,100	7.84%	5.07
6502 TOSHIBA	6,873,806,400	15.67%	10.70
7974 NINTEND	5,942,682,500	1.82%	2.03

Top Stocks by Market Share

Stock	Value (JPY)	Share	PI (bps)
7638 NEW ART	107,886,930	22.08%	117.42
8918 LAND	229,928,550	17.59%	415.77
3528 PROSPECT	208,049,400	17.35%	80.38
6079 ENERES	681,652,230	17.33%	2.14
4689 YAHOO J	4,485,618,670	16.30%	8.56

Top Stocks by Price Improvement

Stock	Value (JPY)	Share	PI (bps)
8918 LAND	229,928,550	17.59%	415.77
7638 NEW ART	107,886,930	22.08%	117.42
3528 PROSPECT	208,049,400	17.35%	80.38
2315 CAICA	131,041,590	11.20%	68.60
7748 HOLON	104,259,270	3.32%	27.30

Top Stocks by Savings

Stock	Value (JPY)	Share	Savings
8918 LAND	229,928,550	17.59%	6,546,810
6502 TOSHIBA	6,873,806,400	15.67%	6,439,300
4689 YAHOO J	4,485,618,670	16.30%	3,464,590
6740 JDI	1,656,022,740	14.95%	3,034,230
4004 SHOWDEN	7,570,602,100	7.84%	2,944,050

- ▶ Analysis is based on SBI Japannext and Thomson Reuters data. Large Cap = TPX100, Mid Cap = TPX500 excl. TPX100, Small Cap = Section1 + Section2 excl. TPX500.
- ▶ All Japan Turnover = Japannext (J+X+U+N) + TSE (excl. Tostnet) + Chi-X (excl. Chi-Match, Chi-Select). Market Share = Japannext turnover / All Japan Turnover.
- ▶ Price Improvement (PI) and Savings (PI*volume) are calculated by comparing the execution price against the primary market's best bid for each sell or best offer for each buy at the point of execution from the taker's perspective. Reported PI is a value-weighted average. Names with weekly traded value less than 100,000,000 JPY are excluded from the rankings tables.

Top Stocks by Universe

Topix 100

Stock	Value (JPY)	Share	PI (bps)
8411 MIZUHO	1,674,701,820	1.67%	5.22
6273 SMC	1,598,852,500	3.43%	2.37
6098 RECRUIT	1,533,514,350	1.63%	2.35
7974 NINTEND	5,942,682,500	1.82%	2.03
4063 SINETUC	1,816,374,940	3.12%	1.53
9433 KDDI	1,562,260,010	1.98%	1.83
6594 NIDEC	1,673,388,500	2.66%	1.62
6758 SONY	2,026,957,480	1.28%	2.05
6861 KEYENCE	1,671,803,000	1.61%	1.91
7201 NISSAN	2,204,582,060	4.14%	1.28

Topix Mid400

Stock	Value (JPY)	Share	PI (bps)
2768 SOJITZ	2,840,886,140	15.63%	9.46
4689 YAHOO J	4,485,618,670	16.3%	8.56
8410 SEVEN BK	1,272,729,790	11.6%	10.03
7167 MEBUKIFG	823,382,460	13.89%	7.72
6472 NTN	1,604,179,040	14.14%	7.18
9831 YAMDADK	1,225,570,350	14.85%	6.35
8515 AIFUL	1,130,405,440	10.78%	8.60
4005 SMICHEM	3,734,030,500	14.39%	5.72
6770 ALPS EL	5,319,818,550	12.62%	5.36
4751 CYBER A	3,612,598,600	11.22%	5.59

Small

Stock	Value (JPY)	Share	PI (bps)
8918 LAND	229,928,550	17.59%	415.77
6740 JDI	1,656,022,740	14.95%	22.16
8585 OR.CORP	209,613,860	14.29%	17.86
8897 TAKARAL	164,445,230	13.63%	7.05
6773 PIONEER	340,708,280	11.07%	23.77
1813 FUDO TTR	146,313,720	12.4%	12.08
1805 TOBISMA	199,693,730	11.49%	12.60
8703 KABU.COM	144,571,990	12.08%	7.77
5563 NP-DENK	227,470,430	11.12%	10.93
5017 FUJI OIL	228,392,090	11.52%	6.13

Mothers

Stock	Value (JPY)	Share	PI (bps)
8789 FINTECH	598,841,490	9.68%	21.54
6033 EXTREME	1,742,542,300	5.58%	26.62
3623 BILLINGS	196,859,100	4.24%	17.82
3990 UUUM	573,325,200	4.43%	14.70
3664 MOBCASTH	459,042,660	3.39%	15.62
6079 ENERES	681,652,230	17.33%	2.14
2160 GNI	241,658,500	6.16%	9.70
4597 SOLASIA	606,456,460	6.23%	8.45
4563 ANGES	636,663,270	4.77%	9.89
7172 JIA	247,996,600	4.34%	9.24

JASDAQ

Stock	Value (JPY)	Share	PI (bps)
7638 NEW ART	107,886,930	22.08%	117.42
6636 SORGMJHD	61,981,250	7.64%	154.84
2315 CAICA	131,041,590	11.2%	68.60
6628 ONKYO	58,209,070	12.5%	21.30
4582 SYMBIO	56,397,560	13.95%	19.14
4293 SEPTENHD	146,562,250	13.67%	16.16
4712 KEYH	92,229,260	8.21%	21.11
9263 VISIONAR	317,534,390	6.7%	20.35
7748 HOLON	104,259,270	3.32%	27.30
2144 YAMANE M	45,870,530	2.91%	27.81

Second Section

Stock	Value (JPY)	Share	PI (bps)
9318 ASIADAVE	42,683,490	12.52%	569.50
3528 PROSPECT	208,049,400	17.35%	80.38
8925 ARDEPRO	52,434,800	17.83%	75.48
3647 GTHREEHD	50,422,050	22.17%	16.39
6786 RVH	57,905,740	5.73%	37.34
5856 TORI HD	83,111,110	14.25%	18.70
6835 ALLIEDHD	141,501,990	10.82%	21.26
5955 YAMASNA	43,899,640	8.05%	22.40
6731 PIXELA	42,353,630	11.06%	17.42
5940 FUJSASH	59,441,860	9.84%	18.17

ETFs & REITs

Stock	Value (JPY)	Share	PI (bps)
8972 KENEDIXO	578,546,700	11.35%	4.99
8976 DAIWAOF	331,307,100	8.75%	6.40
8985 JHR	507,946,640	12.31%	3.22
8952 JRE	852,389,300	9.02%	5.23
1365 DW 225LV	852,969,396	14.78%	1.35
3234 MORIHLS	463,272,040	11.02%	2.73
3279 API	258,982,250	6.33%	5.66
8951 NBF	752,493,900	7.47%	4.21
1360 NKBEAR-2	1,370,421,718	8.07%	3.50
1458 RK 225LV	1,094,250,181	8.25%	2.03

- ▶ Best stocks are selected based on a combined score of turnover, market share and price improvement, and are listed here in order to illustrate a sample of stocks that trading on JNX venues can deliver benefits to our clients.
- ▶ The weights used in choosing the best stocks depend on the universe.