

Market Report for the Week of August 20, 2018

Daily Averages

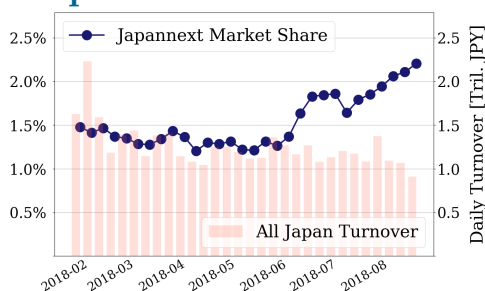
Universe	Value (JPY)	Volume	Share	PI (bps)	Symbols
All Market	93,793,146,602	70,609,687	4.10 %	4.00	2806
Large Cap	20,055,082,848	7,810,200	2.20 %	1.40	100
Mid Cap	46,447,813,388	28,105,280	6.49 %	3.86	401
Small Cap	16,170,581,656	23,902,860	4.56 %	6.70	1624
Mothers & Jasdaq	4,720,274,770	9,512,400	3.35 %	9.88	588
ETFs & REITs	6,399,393,940	1,278,947	3.89 %	1.85	93

All Market
4.1 %
Topix 100

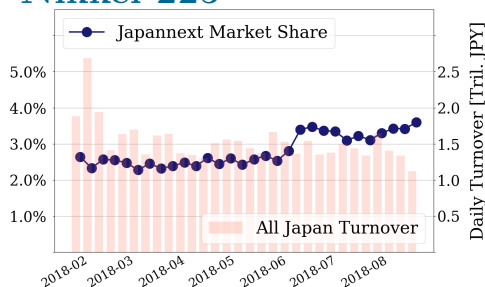
2.2 %
Nikkei 225

3.6 %

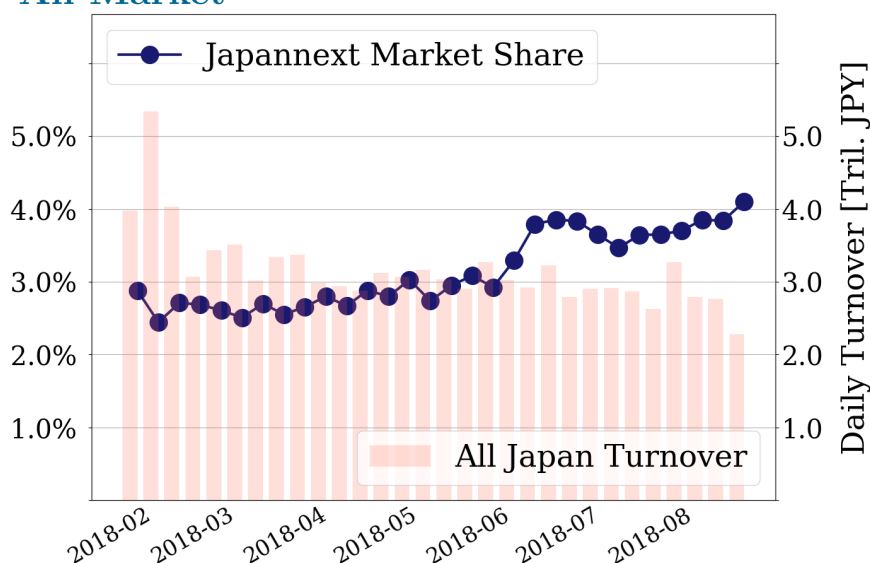
Topix 100



Nikkei 225



All Market



Top Stocks by Turnover

Stock	Value (JPY)	Share	PI (bps)
1570 NIKKEILV	10,689,439,338	2.33%	0.78
1357 NKDOUBLE	6,174,043,460	7.19%	1.81
7974 NINTEND	5,425,139,000	1.64%	1.70
6502 TOSHIBA	5,265,475,900	19.52%	11.50
4004 SHOWDEN	4,536,427,800	8.29%	4.35

Top Stocks by Market Share

Stock	Value (JPY)	Share	PI (bps)
6079 ENERES	460,271,210	23.33%	3.66
6502 TOSHIBA	5,265,475,900	19.52%	11.50
1365 DW 225LV	556,323,802	18.43%	1.56
6472 NTN	1,459,677,570	17.12%	7.12
1813 FUDO TTR	170,009,210	16.67%	15.28

Top Stocks by Price Improvement

Stock	Value (JPY)	Share	PI (bps)
7859 ALMEDIO	138,476,750	5.78%	24.87
3840 PATH	198,852,600	10.50%	22.54
9263 VISIONAR	221,438,920	8.26%	21.79
6773 PIONEER	382,283,670	14.64%	21.44
6740 JDI	1,618,242,580	16.64%	20.98

Top Stocks by Savings

Stock	Value (JPY)	Share	Savings
6502 TOSHIBA	5,265,475,900	19.52%	5,588,000
4689 YAHOO J	3,986,389,590	16.35%	3,446,330
6740 JDI	1,618,242,580	16.64%	2,623,130
2768 SOJITZ	2,488,802,170	15.90%	1,930,270
4324 DENTSU	3,514,787,100	11.83%	1,765,700

- ▶ Analysis is based on SBI Japannext and Thomson Reuters data. Large Cap = TPX100, Mid Cap = TPX500 excl. TPX100, Small Cap = Section1 + Section2 excl. TPX500.
- ▶ All Japan Turnover = Japannext (J+X+U+N) + TSE (excl. Tostnet) + Chi-X (excl. Chi-Match, Chi-Select). Market Share = Japannext turnover / All Japan Turnover.
- ▶ Price Improvement (PI) and Savings (PI*volume) are calculated by comparing the execution price against the primary market's best bid for each sell or best offer for each buy at the point of execution from the taker's perspective. Reported PI is a value-weighted average. Names with weekly traded value less than 100,000,000 JPY are excluded from the rankings tables.

Top Stocks by Universe

Topix 100

Stock	Value (JPY)	Share	PI (bps)
6273 SMC	1,844,814,500	3.64%	2.35
6098 RECRUIT	1,228,755,550	2.15%	2.31
4661 OLC	1,342,113,900	4.68%	1.66
7201 NISSAN	2,979,252,260	5.13%	1.32
4063 SINETUC	1,873,898,580	4.11%	1.47
6981 MURATA	2,683,410,400	3.84%	1.42
3382 7&I-HD	1,222,300,030	3.56%	1.48
7267 HONDA	1,181,063,150	2.3%	1.76
9983 FASTRET	2,635,620,660	1.61%	1.85
7974 NINTEND	5,425,139,000	1.64%	1.70

Topix Mid400

Stock	Value (JPY)	Share	PI (bps)
3765 GUNGHO	719,322,690	13.42%	13.84
4689 YAHOO J	3,986,389,590	16.35%	9.60
2768 SOJITZ	2,488,802,170	15.9%	9.38
7167 MEBUKIFG	739,246,650	15.24%	8.45
6472 NTN	1,459,677,570	17.12%	7.12
8410 SEVEN BK	1,557,892,860	11.97%	9.11
9831 YAMDADK	1,419,515,140	13.87%	6.02
4751 CYBER A	2,530,905,800	12.86%	5.74
4005 SMICHEM	2,982,625,400	13.26%	5.42
4324 DENTSU	3,514,787,100	11.83%	6.06

Small

Stock	Value (JPY)	Share	PI (bps)
6740 JDI	1,618,242,580	16.64%	20.98
1813 FUDO TTR	170,009,210	16.67%	15.28
8585 OR.CORP	317,328,800	15.31%	20.15
6773 PIONEER	382,283,670	14.64%	21.44
5721 S-SCIEN	281,398,160	12.94%	19.94
5563 NP-DENK	159,483,870	12.42%	10.94
1805 TOBISMA	137,795,000	10.49%	13.37
8897 TAKARAL	135,351,170	11.49%	7.43
6632 JVCKW	169,603,930	11.17%	8.76
7238 AKEBONO	114,490,460	10.99%	9.24

Mothers

Stock	Value (JPY)	Share	PI (bps)
8789 FINTECH	1,034,087,180	7.29%	18.89
6079 ENERES	460,271,210	23.33%	3.66
3623 BILLINGS	228,550,900	4.86%	16.16
4597 SOLASIA	358,053,340	9.51%	8.57
2160 GNI	452,561,250	7.0%	11.31
3994 MFORWARD	172,217,900	3.65%	11.52
3990 UUUM	608,292,900	3.48%	11.57
4592 SANBIO	442,748,650	5.14%	8.74
4563 ANGES	617,423,420	5.42%	8.17
5704 JMC	247,578,800	2.49%	12.63

JASDAQ

Stock	Value (JPY)	Share	PI (bps)
6636 SORGMJHD	66,329,600	13.97%	178.66
7638 NEW ART	38,810,430	28.37%	109.56
2315 CAICA	44,796,430	7.85%	64.74
8704 TRADERS	84,668,790	10.89%	28.93
2191 TELLA	51,308,590	4.96%	30.29
4293 SEPTENHD	95,162,970	13.66%	15.98
4582 SYMBIO	42,944,850	11.77%	17.12
6628 ONKYO	49,704,650	7.35%	23.50
9263 VISIONAR	221,438,920	8.26%	21.79
4712 KEYH	78,759,800	9.45%	19.80

Second Section

Stock	Value (JPY)	Share	PI (bps)
3528 PROSPECT	49,272,100	19.88%	97.80
8925 ARDEPRO	32,229,510	15.16%	68.41
3647 GTHREEHD	57,633,110	13.64%	28.54
6835 ALLIEDHD	245,815,270	12.06%	20.83
3840 PATH	198,852,600	10.5%	22.54
5955 YAMASNA	26,768,310	10.86%	21.90
6502 TOSHIBA	5,265,475,900	19.52%	11.50
3121 MBK	35,765,590	6.93%	23.38
6731 PIXELA	112,409,720	10.18%	17.87
7859 ALMEDIO	138,476,750	5.78%	24.87

ETFs & REITs

Stock	Value (JPY)	Share	PI (bps)
8972 KENEDIXO	397,970,700	9.68%	5.96
1365 DW 225LV	556,323,802	18.43%	1.56
8952 JRE	734,247,100	9.18%	4.85
3292 AEONREIT	224,512,990	9.62%	3.52
3279 API	271,061,650	8.55%	4.04
8951 NBF	1,016,422,100	8.96%	3.75
8976 DAIWAOF	274,962,500	6.18%	5.19
8985 JHR	328,797,730	8.39%	3.21
8954 ORIXJRE	480,329,510	9.14%	1.85
1458 RK 225LV	526,826,037	8.1%	2.14

- ▶ Best stocks are selected based on a combined score of turnover, market share and price improvement, and are listed here in order to illustrate a sample of stocks that trading on JNX venues can deliver benefits to our clients.
- ▶ The weights used in choosing the best stocks depend on the universe.