

# Market Report for the Week of August 27, 2018

## Daily Averages

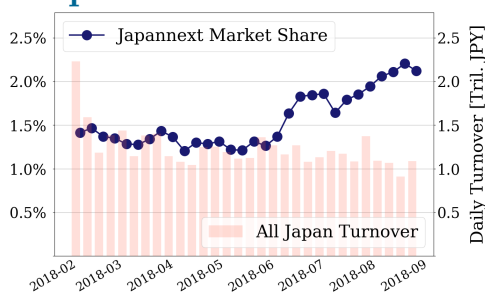
Universe	Value (JPY)	Volume	Share	PI (bps)	Symbols
All Market	105,652,161,978	73,876,817	3.85 %	3.80	2796
Large Cap	23,033,845,478	8,874,920	2.12 %	1.34	100
Mid Cap	52,207,142,692	30,257,700	6.07 %	3.81	401
Small Cap	18,034,298,558	23,906,880	4.30 %	6.10	1618
Mothers & Jasdaq	4,961,270,790	9,202,760	3.05 %	10.27	583
ETFs & REITs	7,415,604,460	1,634,557	3.49 %	1.87	95

All Market  
**3.9 %**  
Topix 100

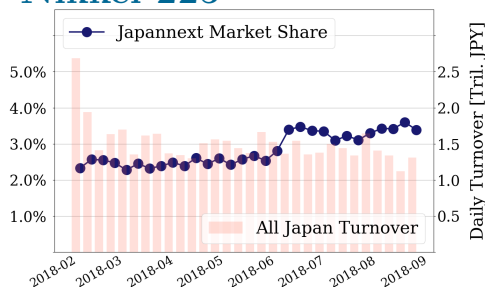
**2.1 %**  
Nikkei 225

**3.4 %**

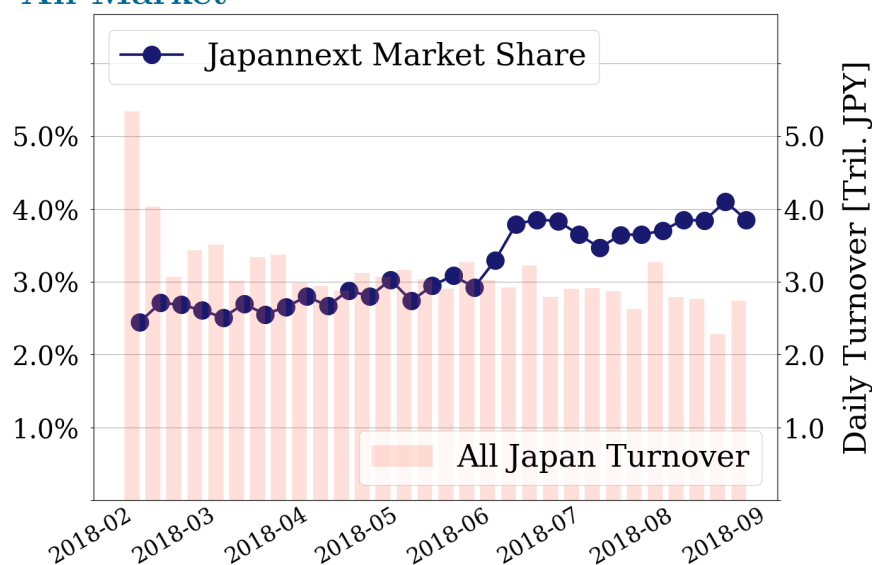
### Topix 100



### Nikkei 225



### All Market



### Top Stocks by Turnover

Stock	Value (JPY)	Share	PI (bps)
1570 NIKKEILV	12,119,784,765	2.03%	0.86
1357 NKDOUBLE	7,642,682,578	6.61%	2.03
4004 SHOWDEN	7,577,401,800	6.49%	5.02
7974 NINTEND	6,376,435,500	1.40%	1.66
9984 SOFTBNKG	5,262,310,840	2.11%	1.41

### Top Stocks by Market Share

Stock	Value (JPY)	Share	PI (bps)
3528 PROSPECT	209,062,500	21.95%	72.02
8585 OR.CORP	196,315,520	18.07%	22.74
2768 SOJITZ	2,805,273,660	16.66%	9.14
6502 TOSHIBA	3,499,848,500	15.39%	10.99
6534 DACHD	1,502,962,300	14.96%	3.91

### Top Stocks by Price Improvement

Stock	Value (JPY)	Share	PI (bps)
3528 PROSPECT	209,062,500	21.95%	72.02
4667 AISNTEC	186,367,550	2.25%	23.53
2191 TELLA	141,896,690	3.33%	23.01
9263 VISIONAR	430,127,720	7.45%	22.79
8585 OR.CORP	196,315,520	18.07%	22.74

### Top Stocks by Savings

Stock	Value (JPY)	Share	Savings
6502 TOSHIBA	3,499,848,500	15.39%	3,309,800
4004 SHOWDEN	7,577,401,800	6.49%	3,181,200
4689 YAHOO J	3,365,498,010	11.59%	2,628,690
2768 SOJITZ	2,805,273,660	16.66%	2,126,890
6740 JDI	1,599,057,140	13.02%	2,071,360

- ▶ Analysis is based on SBI Japannext and Thomson Reuters data. Large Cap = TPX100, Mid Cap = TPX500 excl. TPX100, Small Cap = Section1 + Section2 excl. TPX500.
- ▶ All Japan Turnover = Japannext (J+X+U+N) + TSE (excl. Tostnet) + Chi-X (excl. Chi-Match, Chi-Select). Market Share = Japannext turnover / All Japan Turnover.
- ▶ Price Improvement (PI) and Savings (PI\*volume) are calculated by comparing the execution price against the primary market's best bid for each sell or best offer for each buy at the point of execution from the taker's perspective. Reported PI is a value-weighted average. Names with weekly traded value less than 100,000,000 JPY are excluded from the rankings tables.

# Top Stocks by Universe

## Topix 100

Stock	Value (JPY)	Share	PI (bps)
8411 MIZUHO	1,446,954,480	1.72%	5.10
6273 SMC	2,034,097,000	3.71%	2.16
4661 OLC	1,405,957,700	4.5%	1.63
9983 FASTRET	3,472,708,480	2.24%	2.02
4063 SINETUC	3,220,599,000	4.99%	1.40
6981 MURATA	3,642,222,400	4.1%	1.53
8058 MITBISI	1,587,156,750	2.67%	1.83
7201 NISSAN	2,980,602,440	4.8%	1.34
9020 JR EAST	1,517,432,220	4.1%	1.44
6301 KOMATSU	1,647,073,530	1.85%	1.89

## Topix Mid400

Stock	Value (JPY)	Share	PI (bps)
2768 SOJITZ	2,805,273,660	16.66%	9.14
8410 SEVEN BK	1,444,028,020	13.02%	8.37
6472 NTN	1,300,398,940	14.54%	7.01
4689 YAHOO J	3,365,498,010	11.59%	9.35
4005 SMICHEM	3,415,601,900	13.03%	5.87
7259 AISIN	2,073,791,600	11.81%	6.29
9831 YAMDADK	1,452,503,340	12.14%	5.61
7956 PIGEON	1,579,850,500	12.33%	5.19
9501 TEPCOHD	2,803,783,460	10.69%	6.03
6586 MAKITA	1,076,887,050	10.66%	5.61

## Small

Stock	Value (JPY)	Share	PI (bps)
8585 OR.CORP	196,315,520	18.07%	22.74
1813 FUDO TTR	165,724,730	13.96%	15.45
6740 JDI	1,599,057,140	13.02%	18.62
6773 PIONEER	191,930,650	11.48%	21.39
5563 NP-DENK	340,253,460	12.88%	10.16
4651 SANIX	137,243,860	12.35%	9.84
9412 SKYPER J	151,571,220	12.57%	6.16
8897 TAKARAL	158,733,840	11.76%	8.16
7004 HIT-ZOS	318,920,110	11.02%	5.95
6727 WACOM	239,063,580	10.31%	6.33

## Mothers

Stock	Value (JPY)	Share	PI (bps)
8789 FINTECH	632,270,750	7.97%	17.20
4597 SOLASIA	370,528,090	8.83%	7.96
2160 GNI	303,019,300	6.55%	9.36
3652 DMP	305,306,300	4.08%	11.17
3624 AXELMARK	265,058,740	4.5%	10.22
6079 ENERES	279,220,660	13.42%	2.36
3966 UZABASE	265,523,050	4.09%	9.99
3911 AIMING	152,709,500	3.88%	10.31
3990 UUUM	417,813,300	3.79%	9.99
4563 ANGES	644,633,730	5.56%	6.92

## JASDAQ

Stock	Value (JPY)	Share	PI (bps)
6636 SORGMJHD	52,151,890	12.06%	299.61
2315 CAICA	52,298,680	9.14%	68.81
6628 ONKYO	42,241,630	9.14%	21.73
9263 VISIONAR	430,127,720	7.45%	22.79
4293 SEPTENHD	150,739,190	12.02%	15.40
4712 KEYH	83,803,430	7.51%	17.00
6494 NFK-HD	66,633,070	6.68%	17.52
2191 TELLA	141,896,690	3.33%	23.01
7777 3DMATRIX	44,606,750	6.31%	16.33
4582 SYMBIO	190,720,720	6.83%	14.99

## Second Section

Stock	Value (JPY)	Share	PI (bps)
3528 PROSPECT	209,062,500	21.95%	72.02
6993 DAIKOKYA	45,426,630	13.53%	40.11
6731 PIXELA	30,366,190	11.87%	22.60
3647 GTHREEHD	57,767,560	11.49%	16.48
3840 PATH	108,269,670	9.42%	18.54
6502 TOSHIBA	3,499,848,500	15.39%	10.99
5940 FUJSASH	45,791,880	7.12%	19.65
2459 AUNCONSL	59,494,140	2.14%	31.45
6835 ALLIEDHD	328,173,690	8.53%	15.44
2338 FASTEP	114,871,090	8.14%	14.66

## ETFs & REITs

Stock	Value (JPY)	Share	PI (bps)
8952 JRE	866,216,200	9.82%	5.06
8976 DAIWAOF	299,575,100	8.2%	5.38
3279 API	254,688,000	7.82%	5.15
8972 KENEDIXO	325,716,500	7.71%	5.14
8951 NBF	817,477,900	8.69%	3.67
8985 JHR	346,575,140	8.95%	3.02
1365 DW 225LV	667,900,037	11.92%	1.31
3249 I&I FUND	225,901,240	8.26%	2.83
1458 RK 225LV	881,256,984	8.8%	2.39
8963 INV	522,084,685	8.37%	2.52

- ▶ Best stocks are selected based on a combined score of turnover, market share and price improvement, and are listed here in order to illustrate a sample of stocks that trading on JNX venues can deliver benefits to our clients.
- ▶ The weights used in choosing the best stocks depend on the universe.