

# Market Report for the Week of September 24, 2018

## Daily Averages

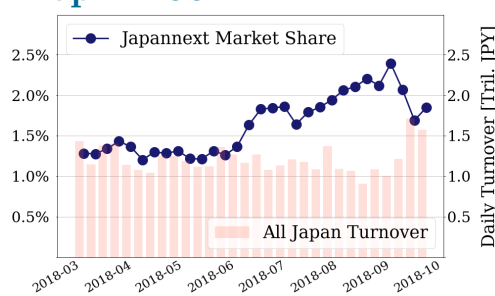
Universe	Value (JPY)	Volume	Share	PI (bps)	Symbols
All Market	128,887,321,754	91,486,134	3.42 %	3.94	2848
Large Cap	29,044,516,958	11,919,800	1.85 %	1.42	100
Mid Cap	66,216,850,255	38,785,825	5.69 %	3.79	400
Small Cap	19,846,787,870	28,586,450	3.62 %	7.51	1681
Mothers & Jasdqa	5,372,176,795	10,554,625	2.88 %	8.97	568
ETFs & REITs	8,406,989,877	1,639,434	2.87 %	1.83	98

All Market  
**3.4 %**  
Topix 100

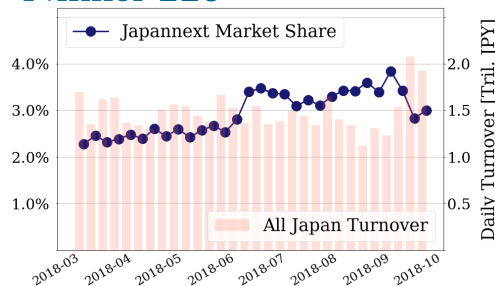
**1.8 %**  
Nikkei 225

**3.0 %**

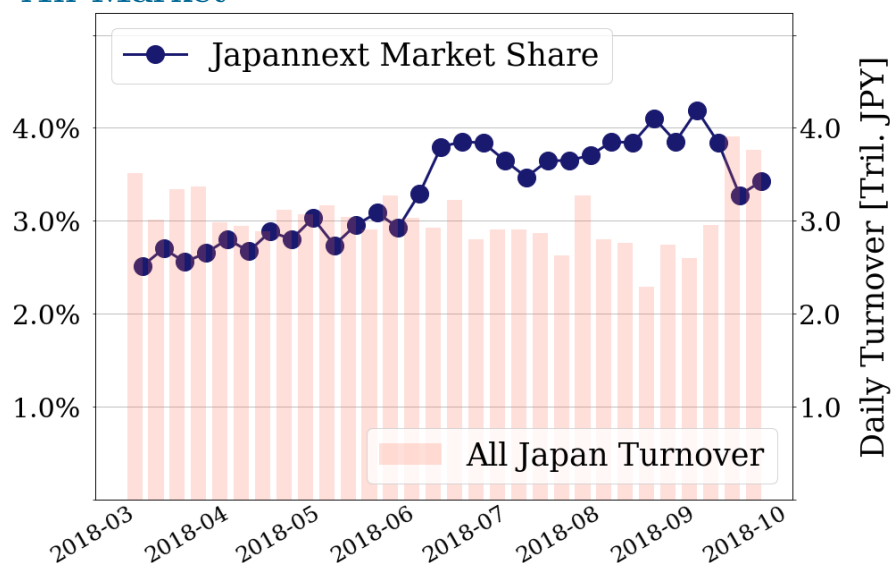
### Topix 100



### Nikkei 225



### All Market



### Top Stocks by Turnover

Stock	Value (JPY)	Share	PI (bps)
1570 NIKKEILV	13,301,376,961	1.95%	0.73
4689 YAHOO J	8,335,477,240	12.24%	8.63
4004 SHOWDEN	7,008,129,000	8.12%	4.81
4751 CYBER A	6,788,871,000	7.68%	5.11
9984 SOFTBNKG	5,078,964,500	1.90%	1.32

### Top Stocks by Market Share

Stock	Value (JPY)	Share	PI (bps)
8918 LAND	320,018,270	35.51%	403.80
2353 NP-PARK	102,555,500	15.29%	17.77
7259 AISIN	2,866,872,000	13.38%	5.46
4293 SEPTENHD	102,374,230	13.28%	14.07
4597 SOLASIA	159,816,520	13.23%	8.90

### Top Stocks by Price Improvement

Stock	Value (JPY)	Share	PI (bps)
8918 LAND	320,018,270	35.51%	403.80
8925 ARDEPRO	198,442,120	12.79%	41.79
9263 VISIONAR	220,028,620	7.48%	31.79
6740 JDI	1,072,022,680	12.18%	26.49
6773 PIONEER	164,130,600	11.73%	23.40

### Top Stocks by Savings

Stock	Value (JPY)	Share	Savings
8918 LAND	320,018,270	35.51%	9,306,660
4689 YAHOO J	8,335,477,240	12.24%	6,134,290
4751 CYBER A	6,788,871,000	7.68%	2,834,700
4004 SHOWDEN	7,008,129,000	8.12%	2,625,500
6740 JDI	1,072,022,680	12.18%	2,334,600

- ▶ Analysis is based on SBI Japannext and Thomson Reuters data. Large Cap = TPX100, Mid Cap = TPX500 excl. TPX100, Small Cap = Section1 + Section2 excl. TPX500.
- ▶ All Japan Turnover = Japannext (J+X+U+N) + TSE (excl. Tostnet) + Chi-X (excl. Chi-Match, Chi-Select). Market Share = Japannext turnover / All Japan Turnover.
- ▶ Price Improvement (PI) and Savings (PI\*volume) are calculated by comparing the execution price against the primary market's best bid for each sell or best offer for each buy at the point of execution from the taker's perspective. Reported PI is a value-weighted average. Names with weekly traded value less than 100,000,000 JPY are excluded from the rankings tables.

# Top Stocks by Universe

## Topix 100

Stock	Value (JPY)	Share	PI (bps)
8411 MIZUHO	1,922,839,410	1.64%	4.96
4528 ONOPHAM	1,363,492,150	4.43%	2.62
6273 SMC	1,651,298,000	3.3%	2.70
7741 HOYA	1,588,568,000	3.66%	1.72
7201 NISSAN	4,559,015,970	4.56%	1.33
4188 MTBCM HD	1,424,081,600	3.85%	1.42
7269 SUZUKI M	1,683,557,620	1.5%	1.90
6301 KOMATSU	1,384,449,350	1.78%	1.71
9983 FASTRET	2,482,977,640	1.16%	1.98
8058 MITBISI	1,405,284,150	1.56%	1.69

## Topix Mid400

Stock	Value (JPY)	Share	PI (bps)
8410 SEVEN BK	1,195,448,570	13.07%	8.65
4689 YAHOO J	8,335,477,240	12.24%	8.63
2768 SOJITZ	2,301,793,080	12.23%	8.26
3765 GUNGHO	1,305,495,480	7.65%	11.64
6472 NTN	1,401,315,780	12.22%	7.01
7167 MEBUKIFG	785,002,080	10.33%	7.41
7259 AISIN	2,866,872,000	13.38%	5.46
9831 YAMDADK	1,490,863,900	10.13%	6.09
1801 TAISEI	2,369,661,700	10.65%	5.78
9501 TEPCOHD	3,290,410,920	9.46%	5.65

## Small

Stock	Value (JPY)	Share	PI (bps)
8918 LAND	320,018,270	35.51%	403.80
6740 JDI	1,072,022,680	12.18%	26.49
6773 PIONEER	164,130,600	11.73%	23.40
8585 OR.CORP	349,537,000	12.28%	16.56
5563 NP-DENK	164,908,050	11.52%	9.88
9424 JPN-COMM	318,906,490	10.22%	12.43
8423 ACCRETIV	172,042,170	9.89%	9.37
2337 ICHIGO	324,434,690	9.69%	6.99
7004 HIT-ZOS	386,551,550	10.23%	5.96
8897 TAKARAL	138,126,230	9.36%	7.25

## Mothers

Stock	Value (JPY)	Share	PI (bps)
4597 SOLASIA	159,816,520	13.23%	8.90
3966 UZABASE	125,289,050	4.58%	14.61
8789 FINTECH	1,756,211,900	6.5%	10.22
2160 GNI	516,994,300	7.21%	7.40
6027 BENG04CM	223,259,600	5.43%	9.76
4563 ANGES	949,500,430	6.05%	6.40
3989 SHARINGT	116,954,630	4.51%	7.46
3652 DMP	146,906,100	3.99%	8.03
6172 METAPS	104,179,400	7.15%	4.30
6092 ENBIO HD	158,041,820	2.36%	9.99

## JASDAQ

Stock	Value (JPY)	Share	PI (bps)
2315 CAICA	55,183,000	7.46%	78.36
6628 ONKYO	58,432,050	12.47%	36.28
3777 GEONEXT	31,924,480	8.29%	37.68
9263 VISIONAR	220,028,620	7.48%	31.79
4293 SEPTENHD	102,374,230	13.28%	14.07
3323 RECOMM	99,798,870	16.91%	8.68
4582 SYMBIO	904,302,070	8.66%	15.17
8256 MARUMIT	46,137,550	8.43%	14.37
6625 JALCO HD	129,262,040	7.24%	16.65
4978 REPROCEL	179,763,920	9.27%	10.51

## Second Section

Stock	Value (JPY)	Share	PI (bps)
9318 ASIADAVE	29,609,180	20.0%	398.29
8894 HRKOSAN	30,792,230	12.38%	212.65
3528 PROSPECT	85,263,900	24.5%	79.20
8925 ARDEPRO	198,442,120	12.79%	41.79
6731 PIXELA	23,937,830	16.12%	18.95
3647 GTHREEHD	21,429,550	10.98%	26.95
5271 TOYOASA	47,990,950	7.64%	32.02
6835 ALLIEDHD	64,363,900	11.06%	19.02
5955 YAMASNA	16,611,310	6.05%	26.26
5940 FUJSASH	25,124,700	7.86%	17.56

## ETFs & REITs

Stock	Value (JPY)	Share	PI (bps)
8952 JRE	898,697,800	11.5%	4.57
3279 API	353,832,100	10.07%	5.15
3296 NP REIT	462,592,800	11.5%	3.36
3292 AEONREIT	289,060,970	12.92%	2.80
8972 KENEDIXO	290,340,900	8.07%	4.21
3295 HULIC RE	237,683,430	9.41%	3.42
8951 NBF	840,823,900	8.76%	3.59
1459 RK 225DI	407,464,890	8.45%	3.43
3227 MIDCITY	279,463,830	8.86%	3.00
8985 JHR	370,545,310	9.5%	2.73

- ▶ Best stocks are selected based on a combined score of turnover, market share and price improvement, and are listed here in order to illustrate a sample of stocks that trading on JNX venues can deliver benefits to our clients.
- ▶ The weights used in choosing the best stocks depend on the universe.