

# Market Report for the Week of October 08, 2018

## Daily Averages

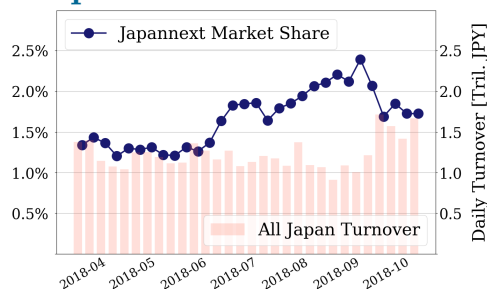
| Universe         | Value (JPY)     | Volume     | Share  | PI (bps) | Symbols |
|------------------|-----------------|------------|--------|----------|---------|
| All Market       | 133,362,854,762 | 93,424,514 | 3.34 % | 3.68     | 2856    |
| Large Cap        | 28,712,300,175  | 11,891,525 | 1.72 % | 1.50     | 100     |
| Mid Cap          | 63,621,158,972  | 37,037,475 | 5.30 % | 3.69     | 400     |
| Small Cap        | 19,780,133,090  | 28,091,825 | 3.83 % | 6.59     | 1666    |
| Mothers & Jasdaq | 5,121,216,520   | 13,129,400 | 2.87 % | 9.78     | 589     |
| ETFs & REITs     | 16,128,046,005  | 3,274,288  | 3.74 % | 1.55     | 100     |

All Market  
**3.3 %**  
Topix 100

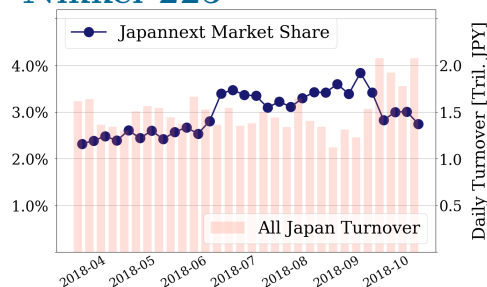
**1.7 %**  
Nikkei 225

**2.7 %**

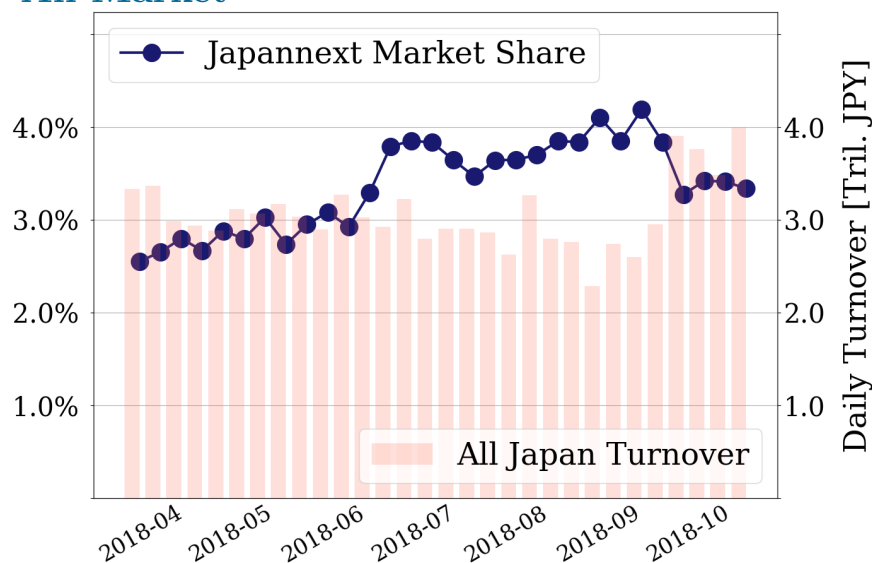
### Topix 100



### Nikkei 225



### All Market



### Top Stocks by Turnover

| Stock         | Value (JPY)    | Share  | PI (bps) |
|---------------|----------------|--------|----------|
| 1570 NIKKEILV | 31,769,510,517 | 3.09%  | 0.83     |
| 1357 NKDOUBLE | 10,949,909,575 | 5.72%  | 1.85     |
| 9984 SOFTBNKG | 6,433,008,860  | 1.29%  | 1.38     |
| 7974 NINTEND  | 6,422,190,500  | 2.23%  | 1.65     |
| 4689 YAHOO J  | 5,703,944,650  | 13.05% | 7.77     |

### Top Stocks by Market Share

| Stock         | Value (JPY) | Share  | PI (bps) |
|---------------|-------------|--------|----------|
| 8918 LAND     | 182,356,970 | 20.95% | 331.46   |
| 3528 PROSPECT | 103,771,360 | 17.81% | 90.01    |
| 3323 RECOMM   | 187,534,220 | 14.85% | 8.99     |
| 2353 NP-PARK  | 102,238,140 | 14.32% | 15.33    |
| 4597 SOLASIA  | 154,627,700 | 13.82% | 10.93    |

### Top Stocks by Price Improvement

| Stock         | Value (JPY)   | Share  | PI (bps) |
|---------------|---------------|--------|----------|
| 8918 LAND     | 182,356,970   | 20.95% | 331.46   |
| 3528 PROSPECT | 103,771,360   | 17.81% | 90.01    |
| 2315 CAICA    | 273,263,480   | 12.37% | 60.09    |
| 6740 JDI      | 1,055,713,510 | 13.03% | 27.02    |
| 9263 VISIONAR | 158,811,610   | 7.19%  | 25.00    |

### Top Stocks by Savings

| Stock         | Value (JPY)    | Share  | Savings   |
|---------------|----------------|--------|-----------|
| 8918 LAND     | 182,356,970    | 20.95% | 4,744,020 |
| 4689 YAHOO J  | 5,703,944,650  | 13.05% | 3,750,330 |
| 6740 JDI      | 1,055,713,510  | 13.03% | 2,165,380 |
| 4004 SHOWDEN  | 5,664,429,100  | 8.82%  | 2,043,300 |
| 1570 NIKKEILV | 31,769,510,517 | 3.09%  | 1,713,679 |

- ▶ Analysis is based on SBI Japannext and Thomson Reuters data. Large Cap = TPX100, Mid Cap = TPX500 excl. TPX100, Small Cap = Section1 + Section2 excl. TPX500.
- ▶ All Japan Turnover = Japannext (J+X+U+N) + TSE (excl. Tostnet) + Chi-X (excl. Chi-Match, Chi-Select). Market Share = Japannext turnover / All Japan Turnover.
- ▶ Price Improvement (PI) and Savings (PI\*volume) are calculated by comparing the execution price against the primary market's best bid for each sell or best offer for each buy at the point of execution from the taker's perspective. Reported PI is a value-weighted average. Names with weekly traded value less than 100,000,000 JPY are excluded from the rankings tables.

# Top Stocks by Universe

## Topix 100

| Stock         | Value (JPY)   | Share | PI (bps) |
|---------------|---------------|-------|----------|
| 8411 MIZUHO   | 2,112,846,770 | 1.84% | 5.13     |
| 6273 SMC      | 1,981,705,500 | 3.52% | 2.18     |
| 7267 HONDA    | 1,345,005,480 | 1.6%  | 2.16     |
| 7201 NISSAN   | 3,339,480,230 | 4.93% | 1.32     |
| 7269 SUZUKI M | 1,327,095,260 | 1.83% | 1.99     |
| 7751 CANON    | 1,408,908,110 | 2.28% | 1.70     |
| 4502 TAKEDAP  | 1,836,943,150 | 1.65% | 1.89     |
| 6861 KEYENCE  | 1,560,279,000 | 1.08% | 2.10     |
| 7974 NINTEND  | 6,422,190,500 | 2.23% | 1.65     |
| 8058 MITBISI  | 1,423,659,620 | 1.81% | 1.78     |

## Topix Mid400

| Stock         | Value (JPY)   | Share  | PI (bps) |
|---------------|---------------|--------|----------|
| 3765 GUNGHO   | 772,607,750   | 11.48% | 12.63    |
| 8410 SEVEN BK | 1,235,904,120 | 13.65% | 8.68     |
| 4689 YAHOO J  | 5,703,944,650 | 13.05% | 7.77     |
| 7167 MEBUKIFG | 968,884,980   | 12.45% | 7.20     |
| 6472 NTN      | 1,866,639,940 | 13.47% | 6.43     |
| 2768 SOJITZ   | 2,738,290,860 | 12.08% | 7.21     |
| 7276 KOITO    | 1,769,543,400 | 11.87% | 6.46     |
| 9831 YAMDADK  | 1,349,906,180 | 11.77% | 5.86     |
| 4005 SMICHEM  | 4,602,185,280 | 11.78% | 5.04     |
| 4751 CYBER A  | 3,618,629,600 | 9.46%  | 5.94     |

## Small

| Stock         | Value (JPY)   | Share  | PI (bps) |
|---------------|---------------|--------|----------|
| 8918 LAND     | 182,356,970   | 20.95% | 331.46   |
| 6740 JDI      | 1,055,713,510 | 13.03% | 27.02    |
| 8585 OR.CORP  | 353,348,950   | 13.26% | 16.00    |
| 5563 NP-DENK  | 206,382,920   | 12.53% | 8.83     |
| 6632 JVCKW    | 291,614,880   | 12.2%  | 8.80     |
| 9424 JPN-COMM | 332,475,660   | 10.85% | 14.77    |
| 5480 NP-YAKN  | 810,763,790   | 11.88% | 7.49     |
| 8897 TAKARAL  | 131,280,080   | 11.22% | 8.24     |
| 3632 GREE     | 328,092,770   | 11.41% | 5.38     |
| 5912 OSJBHD   | 140,431,110   | 10.74% | 8.16     |

## Mothers

| Stock        | Value (JPY) | Share  | PI (bps) |
|--------------|-------------|--------|----------|
| 8922 JAM     | 94,470,870  | 9.76%  | 15.44    |
| 4597 SOLASIA | 154,627,700 | 13.82% | 10.93    |
| 8789 FINTECH | 599,093,680 | 8.35%  | 12.81    |
| 7039 BRIDGE  | 292,785,400 | 2.58%  | 22.97    |
| 5704 JMC     | 189,634,200 | 3.94%  | 14.41    |
| 4563 ANGES   | 524,734,090 | 7.76%  | 7.02     |
| 2160 GNI     | 311,076,400 | 6.96%  | 7.64     |
| 6079 ENERES  | 145,179,770 | 13.05% | 3.12     |
| 6033 EXTREME | 130,903,700 | 2.18%  | 13.85    |
| 4390 IPS     | 103,270,200 | 1.64%  | 14.91    |

## JASDAQ

| Stock         | Value (JPY) | Share  | PI (bps) |
|---------------|-------------|--------|----------|
| 2164 CHIIKISI | 53,853,750  | 4.26%  | 90.59    |
| 2315 CAICA    | 273,263,480 | 12.37% | 60.09    |
| 4347 BR-MEDIA | 57,609,870  | 14.36% | 48.32    |
| 1783 ASIAGTHD | 40,742,960  | 11.29% | 48.44    |
| 9973 KOZOSUSI | 63,035,690  | 22.18% | 22.45    |
| 8704 TRADERS  | 32,975,280  | 5.11%  | 36.54    |
| 9263 VISIONAR | 158,811,610 | 7.19%  | 25.00    |
| 6628 ONKYO    | 75,650,510  | 8.05%  | 20.82    |
| 6494 NFK-HD   | 115,531,610 | 6.17%  | 22.96    |
| 4293 SEPTENHD | 71,258,820  | 11.33% | 13.41    |

## Second Section

| Stock         | Value (JPY) | Share  | PI (bps) |
|---------------|-------------|--------|----------|
| 9318 ASIADAVE | 62,992,030  | 10.46% | 761.19   |
| 8894 HRKOSAN  | 19,044,150  | 9.19%  | 176.69   |
| 3528 PROSPECT | 103,771,360 | 17.81% | 90.01    |
| 7647 ONTSU    | 23,559,990  | 0.35%  | 91.17    |
| 6993 DAIKOKYA | 23,068,550  | 6.98%  | 41.95    |
| 3647 GTHREEHD | 65,616,870  | 17.13% | 22.37    |
| 4735 KYOSHIN  | 22,865,090  | 7.77%  | 30.67    |
| 8925 ARDEPRO  | 518,458,160 | 5.9%   | 24.21    |
| 2338 BITONEG  | 21,365,530  | 5.76%  | 21.89    |
| 5940 FUJSASH  | 34,578,240  | 5.56%  | 19.19    |

## ETFs & REITs

| Stock         | Value (JPY)   | Share  | PI (bps) |
|---------------|---------------|--------|----------|
| 3296 NP REIT  | 354,258,500   | 9.74%  | 4.23     |
| 1365 DW 225LV | 1,217,501,177 | 12.66% | 2.46     |
| 8976 DAIWAOF  | 309,343,100   | 7.56%  | 4.88     |
| 8952 JRE      | 643,898,900   | 7.53%  | 4.35     |
| 3279 API      | 277,515,700   | 6.33%  | 5.26     |
| 8972 KENEDIXO | 332,906,400   | 8.26%  | 3.68     |
| 8985 JHR      | 403,592,160   | 9.51%  | 2.74     |
| 1458 RK 225LV | 1,280,795,394 | 8.87%  | 3.09     |
| 8951 NBF      | 759,895,800   | 7.53%  | 3.50     |
| 3295 HULIC RE | 260,023,730   | 8.1%   | 2.83     |

- ▶ Best stocks are selected based on a combined score of turnover, market share and price improvement, and are listed here in order to illustrate a sample of stocks that trading on JNX venues can deliver benefits to our clients.
- ▶ The weights used in choosing the best stocks depend on the universe.