

Market Report for the Week of October 15, 2018

Daily Averages

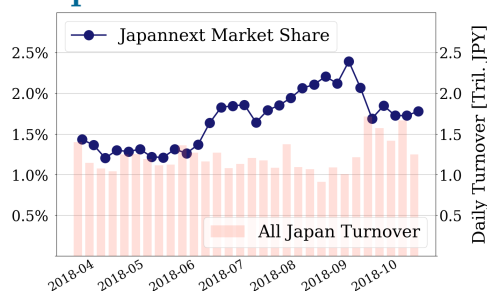
Universe	Value (JPY)	Volume	Share	PI (bps)	Symbols
All Market	113,538,231,665	82,988,319	3.64 %	3.78	2782
Large Cap	22,175,041,720	9,774,960	1.78 %	1.48	100
Mid Cap	56,902,457,528	34,908,700	6.04 %	3.73	401
Small Cap	17,703,228,374	24,476,720	4.08 %	6.62	1630
Mothers & Jasdaq	4,720,083,472	11,546,420	2.90 %	9.40	554
ETFs & REITs	12,037,420,571	2,281,519	3.61 %	1.60	97

All Market
3.6 %
Topix 100

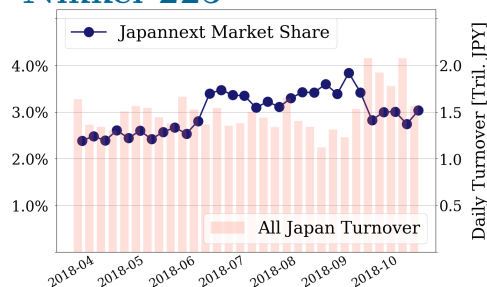
1.8 %
Nikkei 225

3.0 %

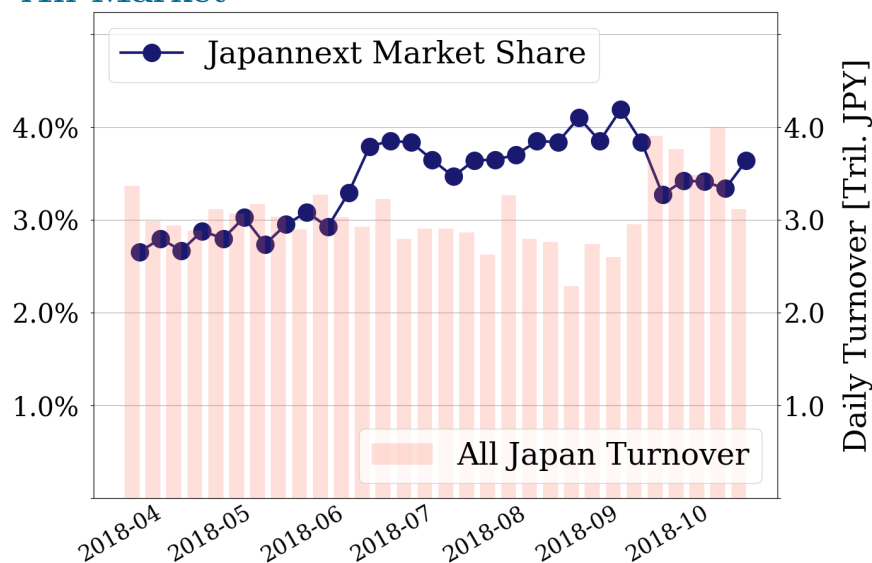
Topix 100



Nikkei 225



All Market



Top Stocks by Turnover

Stock	Value (JPY)	Share	PI (bps)
1570 NIKKEILV	27,943,460,572	2.70%	0.95
1357 NKDOUBLE	9,871,130,651	5.91%	2.03
9984 SOFTBNKG	5,944,128,800	1.00%	1.22
4005 SMICHEM	5,840,449,960	12.48%	5.11
6506 YASKAWA	5,790,222,950	7.04%	4.26

Top Stocks by Market Share

Stock	Value (JPY)	Share	PI (bps)
9972 ALTECH	164,466,000	18.73%	23.81
6632 JVCKW	328,401,160	16.70%	9.40
6740 JDI	1,583,100,570	16.68%	30.80
8410 SEVEN BK	1,488,428,690	15.60%	9.12
1365 DW 225LV	1,325,684,661	15.58%	2.60

Top Stocks by Price Improvement

Stock	Value (JPY)	Share	PI (bps)
8918 LAND	101,283,250	10.53%	354.79
2315 CAICA	121,807,430	11.79%	73.55
4420 ESOL	200,495,450	0.88%	52.19
7610 TAY TWO	185,144,460	7.76%	36.98
6740 JDI	1,583,100,570	16.68%	30.80

Top Stocks by Savings

Stock	Value (JPY)	Share	Savings
4689 YAHOO J	5,762,202,150	13.65%	4,232,150
6740 JDI	1,583,100,570	16.68%	3,901,240
8918 LAND	101,283,250	10.53%	3,141,530
2768 SOJITZ	4,040,171,770	14.22%	2,094,970
4751 CYBER A	4,444,958,900	13.11%	2,089,100

- ▶ Analysis is based on SBI Japannext and Thomson Reuters data. Large Cap = TPX100, Mid Cap = TPX500 excl. TPX100, Small Cap = Section1 + Section2 excl. TPX500.
- ▶ All Japan Turnover = Japannext (J+X+U+N) + TSE (excl. Tostnet) + Chi-X (excl. Chi-Match, Chi-Select). Market Share = Japannext turnover / All Japan Turnover.
- ▶ Price Improvement (PI) and Savings (PI*volume) are calculated by comparing the execution price against the primary market's best bid for each sell or best offer for each buy at the point of execution from the taker's perspective. Reported PI is a value-weighted average. Names with weekly traded value less than 100,000,000 JPY are excluded from the rankings tables.

Top Stocks by Universe

Topix 100

Stock	Value (JPY)	Share	PI (bps)
8411 MIZUHO	2,522,806,090	2.32%	5.24
8113 UNICHAM	1,452,984,950	5.13%	2.06
6273 SMC	1,842,982,500	3.11%	2.46
4568 1-SANKYO	1,601,757,740	4.26%	1.91
3407 ASA-KSI	1,254,340,410	3.81%	1.61
7267 HONDA	1,400,253,400	1.92%	1.96
7201 NISSAN	3,144,674,090	4.71%	1.31
6861 KEYENCE	1,459,996,000	1.22%	2.17
4911 SHISEIDO	2,316,682,420	1.87%	1.70
4452 KAO	1,308,649,340	2.19%	1.57

Topix Mid400

Stock	Value (JPY)	Share	PI (bps)
8410 SEVEN BK	1,488,428,690	15.6%	9.12
4689 YAHOO J	5,762,202,150	13.65%	8.73
7167 MEBUKIFG	1,348,830,890	14.92%	7.15
2768 SOJITZ	4,040,171,770	14.22%	7.54
6472 NTN	1,985,989,660	14.53%	6.29
4751 CYBER A	4,444,958,900	13.11%	6.09
4005 SMICHEM	5,840,449,960	12.48%	5.11
9831 YAMDADK	3,502,520,700	11.38%	5.78
6201 TOY-IND	1,591,981,200	12.09%	4.79
8848 LEOPC21	856,439,480	11.47%	5.17

Small

Stock	Value (JPY)	Share	PI (bps)
9972 ALTECH	164,466,000	18.73%	23.81
6740 JDI	1,583,100,570	16.68%	30.80
6632 JVCKW	328,401,160	16.7%	9.40
6773 PIONEER	234,324,980	14.38%	24.94
8585 OR.CORP	702,890,480	14.01%	15.10
5563 NP-DENK	227,219,560	14.93%	9.10
8897 TAKARAL	208,991,880	13.82%	7.54
9424 JPN-COMM	221,674,450	11.07%	15.38
5480 NP-YAKN	776,226,330	12.29%	7.81
8703 KABU.COM	227,297,090	12.36%	6.54

Mothers

Stock	Value (JPY)	Share	PI (bps)
4420 ESOL	200,495,450	0.88%	52.19
8789 FINTECH	633,527,760	10.17%	14.77
4597 SOLASIA	120,857,000	13.49%	10.53
4564 OTS	103,846,990	8.37%	14.25
4563 ANGES	486,155,250	6.94%	8.34
2160 GNI	216,983,350	8.37%	6.87
3996 SIGNPOST	561,977,550	2.95%	13.34
3692 FFRI	98,503,050	2.71%	13.65
5704 JMC	119,462,500	3.55%	11.24
3623 BILLINGS	137,085,500	2.36%	13.28

JASDAQ

Stock	Value (JPY)	Share	PI (bps)
2315 CAICA	121,807,430	11.79%	73.55
7610 TAY TWO	185,144,460	7.76%	36.98
6628 ONKYO	46,979,540	11.32%	27.38
9263 VISIONAR	156,195,950	7.12%	24.73
2479 JTEC	65,410,720	4.51%	27.26
4293 SEPTENHD	68,217,140	11.4%	14.96
4777 GALA	40,569,080	3.54%	24.07
4978 REPROCEL	144,840,260	14.13%	9.14
8946 ASIANSTR	113,047,430	7.9%	13.80
6467 NICHIDI	112,325,130	5.68%	15.71

Second Section

Stock	Value (JPY)	Share	PI (bps)
9318 ASIADVEVE	69,043,800	16.18%	789.75
3528 PROSPECT	83,855,900	28.25%	89.65
1757 CREA HD	22,487,960	14.7%	114.08
5940 FUJSASH	27,300,550	6.08%	36.13
3647 GTHREEHD	142,819,590	12.89%	22.34
5955 YAMASNA	35,181,680	7.22%	27.03
8925 ARDEPRO	596,858,710	7.86%	21.70
6835 ALLIEDHD	68,921,250	7.88%	17.95
6731 PIXELA	227,061,630	9.95%	14.21
9980 MRK HLD	48,992,330	15.44%	8.76

ETFs & REITs

Stock	Value (JPY)	Share	PI (bps)
1365 DW 225LV	1,325,684,661	15.58%	2.60
3296 NP REIT	362,457,850	11.55%	3.28
3226 ACCOMMO	287,015,400	8.04%	5.36
8952 JRE	809,360,600	8.79%	4.59
8963 INV	699,160,805	12.18%	2.47
8972 KENEDIXO	470,273,700	7.2%	4.51
8985 JHR	436,576,650	9.37%	2.77
8964 FRONRE	236,590,250	7.41%	3.87
8976 DAIWAOF	246,363,600	6.59%	4.26
8951 NBF	720,655,900	7.55%	3.46

- ▶ Best stocks are selected based on a combined score of turnover, market share and price improvement, and are listed here in order to illustrate a sample of stocks that trading on JNX venues can deliver benefits to our clients.
- ▶ The weights used in choosing the best stocks depend on the universe.