

# Market Report for the Week of October 22, 2018

## Daily Averages

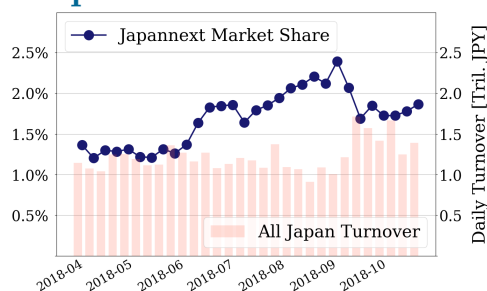
Universe	Value (JPY)	Volume	Share	PI (bps)	Symbols
All Market	128,662,892,356	97,320,415	3.70 %	3.89	2863
Large Cap	25,953,325,850	11,154,940	1.87 %	1.55	100
Mid Cap	60,149,296,784	39,972,440	5.93 %	3.86	401
Small Cap	21,733,425,112	30,928,640	4.40 %	6.77	1684
Mothers & Jasdaq	4,990,208,404	11,691,380	3.20 %	9.65	580
ETFs & REITs	15,836,636,206	3,573,015	3.76 %	1.51	99

All Market  
**3.7 %**  
Topix 100

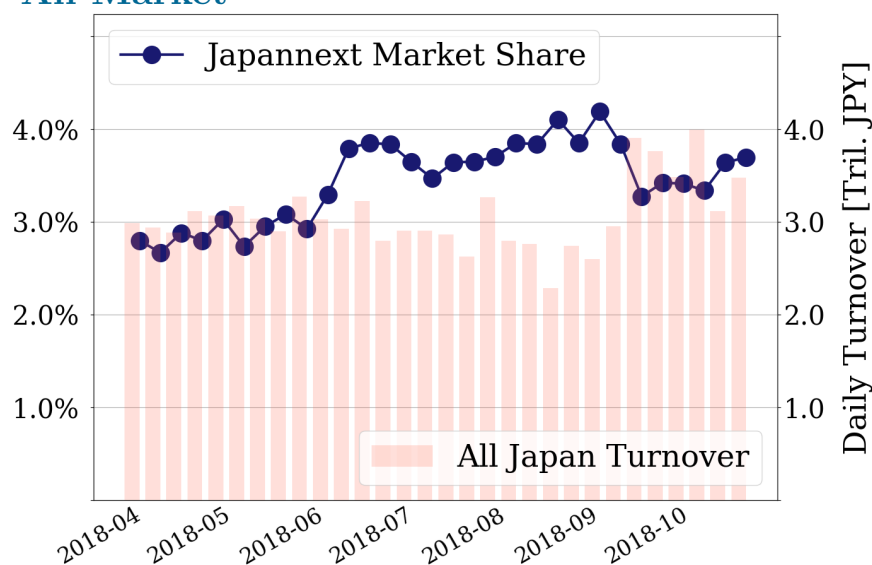
**1.9 %**  
Nikkei 225

**3.1 %**

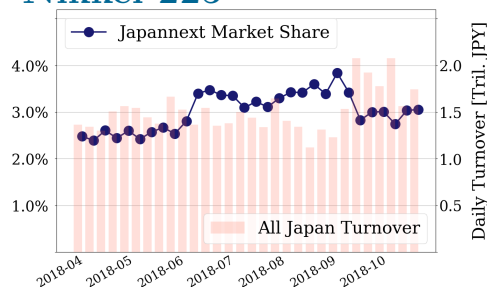
### Topix 100



### All Market



### Nikkei 225



## Top Stocks by Turnover

Stock	Value (JPY)	Share	PI (bps)
1570 NIKKEILV	36,596,402,796	2.86%	0.91
1357 NKDOUBLE	17,413,920,297	6.44%	1.80
4689 YAHOO J	6,998,489,900	12.68%	9.22
4005 SMICHEM	6,118,124,150	13.62%	5.62
1579 225 BULL	5,933,585,320	7.00%	1.60

## Top Stocks by Market Share

Stock	Value (JPY)	Share	PI (bps)
8918 LAND	291,985,370	19.77%	386.39
3528 PROSPECT	157,254,740	17.62%	78.82
2353 NP-PARK	124,778,120	17.36%	18.89
1365 DW 225LV	2,019,257,604	16.53%	2.01
7167 MEBUKIFG	1,440,405,120	16.48%	8.44

## Top Stocks by Price Improvement

Stock	Value (JPY)	Share	PI (bps)
8918 LAND	291,985,370	19.77%	386.39
3250 ADWORKS	166,910,250	1.27%	98.11
3528 PROSPECT	157,254,740	17.62%	78.82
4025 TAKI CH	214,717,600	1.14%	34.22
8925 ARDEPRO	280,323,260	14.15%	32.19

## Top Stocks by Savings

Stock	Value (JPY)	Share	Savings
8918 LAND	291,985,370	19.77%	8,653,180
4689 YAHOO J	6,998,489,900	12.68%	5,414,620
6740 JDI	1,396,712,580	15.95%	3,442,370
2768 SOJITZ	4,110,251,250	15.40%	2,498,120
4005 SMICHEM	6,118,124,150	13.62%	2,365,240

- ▶ Analysis is based on SBI Japannext and Thomson Reuters data. Large Cap = TPX100, Mid Cap = TPX500 excl. TPX100, Small Cap = Section1 + Section2 excl. TPX500.
- ▶ All Japan Turnover = Japannext (J+X+U+N) + TSE (excl. Tostnet) + Chi-X (excl. Chi-Match, Chi-Select). Market Share = Japannext turnover / All Japan Turnover.
- ▶ Price Improvement (PI) and Savings (PI\*volume) are calculated by comparing the execution price against the primary market's best bid for each sell or best offer for each buy at the point of execution from the taker's perspective. Reported PI is a value-weighted average. Names with weekly traded value less than 100,000,000 JPY are excluded from the rankings tables.

# Top Stocks by Universe

## Topix 100

Stock	Value (JPY)	Share	PI (bps)
8411 MIZUHO	2,849,401,120	2.23%	5.36
6273 SMC	1,881,564,500	3.75%	2.76
6758 SONY	2,639,339,080	1.07%	2.91
8113 UNICHAM	1,710,956,800	4.28%	1.77
6861 KEYENCE	2,570,956,000	1.9%	2.32
4452 KAO	2,611,882,300	2.29%	1.87
8306 MUFG	2,622,023,270	1.29%	2.09
7974 NINTEND	3,785,749,000	1.22%	2.11
6594 NIDEC	3,635,096,600	3.15%	1.51
6367 DAIKINI	1,744,859,140	2.42%	1.67

## Topix Mid400

Stock	Value (JPY)	Share	PI (bps)
3765 GUNGHO	921,400,990	11.69%	14.30
7167 MEBUKIFG	1,440,405,120	16.48%	8.44
2768 SOJITZ	4,110,251,250	15.4%	8.38
8410 SEVEN BK	1,418,888,170	13.95%	8.41
4689 YAHOO J	6,998,489,900	12.68%	9.22
6472 NTN	2,562,699,000	15.12%	6.82
8515 AIFUL	1,112,743,060	12.2%	8.24
4005 SMICHEM	6,118,124,150	13.62%	5.62
9831 YAMDADK	2,723,070,470	12.34%	6.09
6201 TOY-IND	1,668,637,000	12.81%	4.94

## Small

Stock	Value (JPY)	Share	PI (bps)
8918 LAND	291,985,370	19.77%	386.39
6740 JDI	1,396,712,580	15.95%	30.89
8585 OR.CORP	698,091,230	16.09%	14.68
6632 JVCKW	359,327,410	15.69%	9.16
6773 PIONEER	285,458,900	12.54%	24.92
7238 AKEBONO	187,214,720	13.47%	9.24
8714 SENSUIK	260,030,100	13.19%	8.19
5563 NP-DENK	295,863,940	12.57%	9.07
9424 JPN-COMM	229,837,210	10.27%	19.98
8897 TAKARAL	247,527,040	11.84%	8.78

## Mothers

Stock	Value (JPY)	Share	PI (bps)
8789 FINTECH	1,123,501,380	8.88%	13.75
4597 SOLASIA	190,795,580	10.65%	11.50
7034 PRORED	363,547,500	3.65%	20.26
3692 FFRI	185,907,500	5.43%	12.61
3652 DMP	231,372,250	10.11%	7.11
3996 SIGNPOST	447,916,950	3.76%	13.57
5704 JMC	311,710,550	8.1%	6.92
3990 UUUM	347,848,600	3.07%	12.16
6172 METAPS	268,047,830	9.7%	4.42
3680 HOTTOLNK	199,153,150	5.32%	8.21

## JASDAQ

Stock	Value (JPY)	Share	PI (bps)
2315 CAICA	98,371,600	13.27%	91.00
4421 DISYSTEM	71,855,020	0.62%	71.28
1783 ASIAGTHD	70,780,670	9.62%	30.48
6628 ONKYO	53,158,580	10.39%	26.63
8704 TRADERS	49,157,990	8.04%	30.45
9263 VISIONAR	172,765,980	7.31%	24.51
4293 SEPTENHD	94,299,090	11.97%	15.93
2673 YUMETAI	46,541,700	6.78%	22.01
4978 REPROCEL	154,716,320	14.62%	10.52
2134 SUNCAPTL	599,178,670	6.58%	19.47

## Second Section

Stock	Value (JPY)	Share	PI (bps)
9318 ASIADVEVE	71,144,090	11.03%	691.50
1757 CREA HD	29,667,750	17.44%	80.49
3528 PROSPECT	157,254,740	17.62%	78.82
6993 DAIKOKYA	21,194,970	9.89%	55.37
8925 ARDEPRO	280,323,260	14.15%	32.19
3647 GTHREEHD	43,613,970	15.91%	24.94
4987 TERAOKA	30,031,810	4.12%	36.43
5955 YAMASNA	24,281,270	5.77%	29.22
3840 PATH	61,671,770	5.95%	28.09
6731 PIXELA	138,574,430	12.12%	16.83

## ETFs & REITs

Stock	Value (JPY)	Share	PI (bps)
1365 DW 225LV	2,019,257,604	16.53%	2.01
8964 FRONRE	233,297,600	10.89%	3.71
8976 DAIWAOF	294,663,600	8.54%	5.21
8952 JRE	633,670,700	9.62%	4.27
3296 NP REIT	253,566,600	10.68%	3.48
1459 RK 225DI	866,568,165	9.09%	3.01
8951 NBF	602,587,400	7.95%	3.51
8985 JHR	367,910,640	8.67%	2.94
3287 HOSINORR	236,865,700	6.76%	3.71
1360 NKBEAR-2	1,586,552,093	5.53%	4.40

- ▶ Best stocks are selected based on a combined score of turnover, market share and price improvement, and are listed here in order to illustrate a sample of stocks that trading on JNX venues can deliver benefits to our clients.
- ▶ The weights used in choosing the best stocks depend on the universe.