

Market Report for the Week of October 29, 2018

Daily Averages

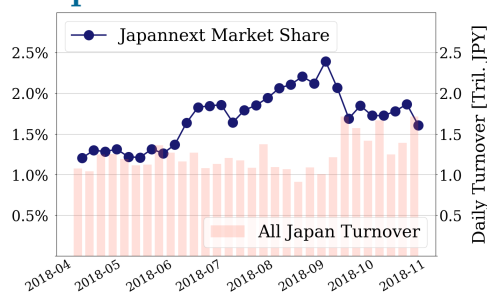
Universe	Value (JPY)	Volume	Share	PI (bps)	Symbols
All Market	126,969,474,067	93,026,724	3.13 %	3.70	2872
Large Cap	27,510,681,428	10,645,820	1.61 %	1.53	100
Mid Cap	60,584,359,742	42,283,120	4.68 %	3.66	401
Small Cap	20,919,578,884	27,593,560	3.81 %	6.15	1694
Mothers & Jasdaq	4,604,565,224	9,877,620	3.09 %	8.80	580
ETFs & REITs	13,350,288,789	2,626,604	3.79 %	1.64	98

All Market
3.1 %
Topix 100

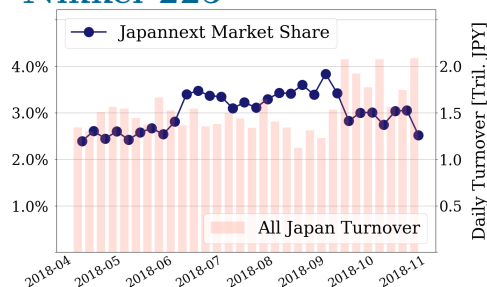
1.6 %
Nikkei 225

2.5 %

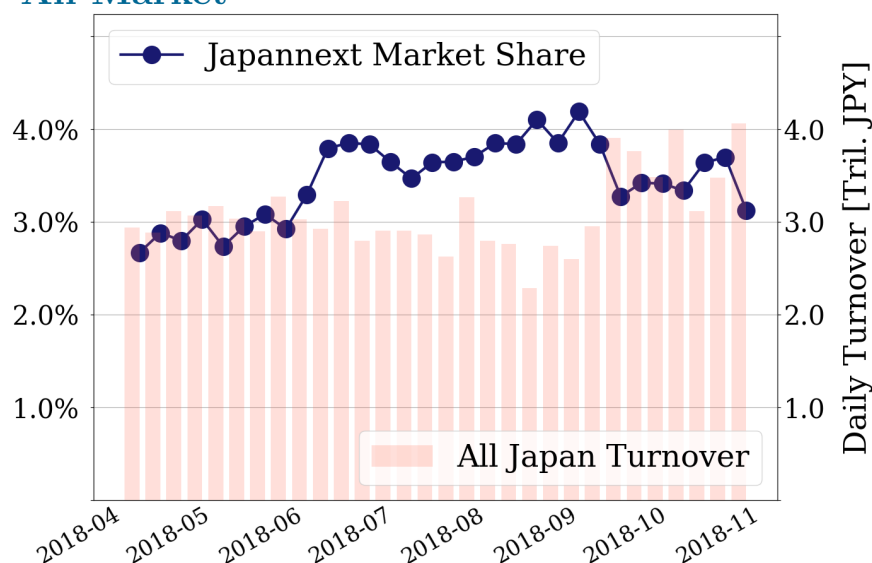
Topix 100



Nikkei 225



All Market



Top Stocks by Turnover

Stock	Value (JPY)	Share	PI (bps)
1570 NIKKEILV	31,706,140,454	3.13%	1.00
1357 NKDOUBLE	12,197,392,494	5.00%	2.00
4689 YAHOO J	8,490,992,630	11.21%	9.35
9984 SOFTBNKG	5,449,882,980	0.96%	1.30
7974 NINTEND	4,831,811,000	1.28%	2.01

Top Stocks by Market Share

Stock	Value (JPY)	Share	PI (bps)
8933 NTTURBAN	3,621,784,830	21.51%	1.69
3528 PROSPECT	141,991,520	21.32%	72.71
7167 MEBUKIFG	1,587,226,680	16.77%	8.28
1365 DW 225LV	1,608,364,556	16.07%	2.10
4978 REPROCEL	123,573,630	15.90%	11.10

Top Stocks by Price Improvement

Stock	Value (JPY)	Share	PI (bps)
8918 LAND	169,711,920	11.69%	375.28
3528 PROSPECT	141,991,520	21.32%	72.71
8925 ARDEPRO	190,081,610	14.71%	41.92
9820 MTGENEX	275,071,000	1.71%	32.29
6740 JDI	1,425,801,950	15.20%	31.05

Top Stocks by Savings

Stock	Value (JPY)	Share	Savings
4689 YAHOO J	8,490,992,630	11.21%	6,820,610
8918 LAND	169,711,920	11.69%	5,418,800
6740 JDI	1,425,801,950	15.20%	3,613,500
2768 SOJITZ	4,509,704,970	13.34%	2,607,900
1570 NIKKEILV	31,706,140,454	3.13%	2,359,055

- ▶ Analysis is based on SBI Japannext and Thomson Reuters data. Large Cap = TPX100, Mid Cap = TPX500 excl. TPX100, Small Cap = Section1 + Section2 excl. TPX500.
- ▶ All Japan Turnover = Japannext (J+X+U+N) + TSE (excl. Tostnet) + Chi-X (excl. Chi-Match, Chi-Select). Market Share = Japannext turnover / All Japan Turnover.
- ▶ Price Improvement (PI) and Savings (PI*volume) are calculated by comparing the execution price against the primary market's best bid for each sell or best offer for each buy at the point of execution from the taker's perspective. Reported PI is a value-weighted average. Names with weekly traded value less than 100,000,000 JPY are excluded from the rankings tables.

Top Stocks by Universe

Topix 100

Stock	Value (JPY)	Share	PI (bps)
8411 MIZUHO	2,307,832,450	1.73%	5.20
6273 SMC	2,696,132,000	2.8%	2.33
8058 MITBISI	2,351,389,600	2.17%	2.13
6861 KEYENCE	2,959,676,000	1.52%	2.29
4523 EISAI	1,640,912,040	2.78%	1.60
7201 NISSAN	3,028,695,870	4.35%	1.25
7751 CANON	2,021,499,940	1.84%	1.81
7974 NINTEND	4,831,811,000	1.28%	2.01
8035 TKOELCN	4,181,883,180	2.1%	1.64
9983 FASTRET	3,638,559,360	1.2%	1.87

Topix Mid400

Stock	Value (JPY)	Share	PI (bps)
7167 MEBUKIFG	1,587,226,680	16.77%	8.28
3765 GUNGHO	1,212,705,960	9.08%	13.02
8515 AIFUL	1,295,235,170	13.38%	8.42
2768 SOJITZ	4,509,704,970	13.34%	8.06
4689 YAHOO J	8,490,992,630	11.21%	9.35
6472 NTN	2,308,816,240	12.84%	7.63
8410 SEVEN BK	1,639,208,680	11.57%	7.85
8933 NTTURBAN	3,621,784,830	21.51%	1.69
4005 SMICHEM	4,621,649,060	11.47%	5.10
8593 MUFLEASE	1,044,608,070	10.83%	4.93

Small

Stock	Value (JPY)	Share	PI (bps)
8918 LAND	169,711,920	11.69%	375.28
6740 JDI	1,425,801,950	15.2%	31.05
6773 PIONEER	386,348,480	14.45%	29.14
5563 NP-DENK	283,292,070	14.87%	9.27
8714 SENSUIK	212,732,990	13.53%	7.68
5017 FUJI OIL	192,994,230	13.68%	5.50
8897 TAKARAL	253,818,860	13.03%	8.11
5912 OSJBHD	170,819,260	12.57%	8.82
9412 SKYPER J	238,099,640	11.23%	5.21
8585 OR.CORP	665,318,470	9.39%	15.12

Mothers

Stock	Value (JPY)	Share	PI (bps)
4422 VALUENEX	320,224,250	1.51%	21.67
8789 FINTECH	1,558,907,150	5.72%	11.17
6172 METAPS	238,288,880	11.0%	4.57
3652 DMP	147,425,500	7.32%	7.46
3996 SIGNPOST	368,164,550	3.03%	12.49
2160 GNI	287,149,690	8.45%	5.59
5704 JMC	503,876,190	8.31%	5.57
6033 EXTREME	155,124,150	2.87%	11.01
6027 BENG04CM	234,737,190	3.54%	8.57
3182 OIRADICH	411,431,860	6.02%	5.32

JASDAQ

Stock	Value (JPY)	Share	PI (bps)
2315 CAICA	58,921,780	11.04%	83.01
2164 CHIKISI	36,823,750	2.16%	81.96
4347 BR-MEDIA	87,566,870	7.86%	33.50
9263 VISIONAR	141,901,730	10.24%	26.69
2134 SUNCAPTL	498,998,020	11.16%	23.45
1783 ASIAGTHD	116,144,680	9.48%	25.38
3390 INEST	41,481,470	7.9%	26.58
4978 REPROCEL	123,573,630	15.9%	11.10
9820 MTGENEX	275,071,000	1.71%	32.29
8946 ASIANSTR	49,400,790	7.13%	18.17

Second Section

Stock	Value (JPY)	Share	PI (bps)
9318 ASIADVEVE	20,638,010	3.88%	503.07
3528 PROSPECT	141,991,520	21.32%	72.71
8925 ARDEPRO	190,081,610	14.71%	41.92
5955 YAMASNA	37,147,040	9.36%	35.43
6835 ALLIEDHD	73,661,520	14.9%	21.31
6731 PIXELA	95,796,010	13.85%	17.89
5940 FUJSASH	25,988,640	6.05%	29.31
3823 ACRODEA	16,121,460	5.67%	25.72
2307 CROSCAT	37,832,550	3.73%	29.51
2338 BITONEG	15,455,520	3.82%	25.97

ETFs & REITs

Stock	Value (JPY)	Share	PI (bps)
1365 DW 225LV	1,608,364,556	16.07%	2.10
3296 NP REIT	302,497,900	10.39%	4.50
8963 INV	844,748,830	11.17%	2.63
8985 JHR	569,555,100	9.95%	3.06
8952 JRE	656,826,800	7.25%	4.56
3234 MORIHLS	311,337,920	10.65%	2.42
8976 DAIWAOF	387,300,500	7.8%	4.05
1552 VIXSHORT	449,726,932	12.26%	1.67
8972 KENEDIXO	405,845,700	6.96%	4.28
8964 FRONRE	271,072,200	8.59%	3.15

- ▶ Best stocks are selected based on a combined score of turnover, market share and price improvement, and are listed here in order to illustrate a sample of stocks that trading on JNX venues can deliver benefits to our clients.
- ▶ The weights used in choosing the best stocks depend on the universe.