

Market Report for the Week of January 14, 2019

Daily Averages

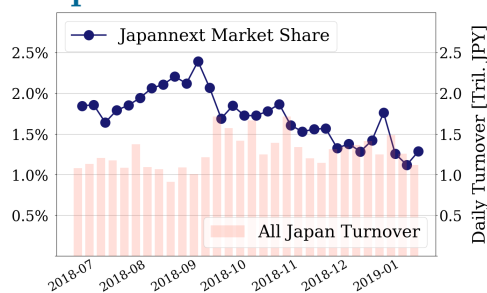
Universe	Value (JPY)	Volume	Share	PI (bps)	Symbols
All Market	86,094,377,149	70,621,837	3.15 %	4.13	2794
Large Cap	14,390,671,832	6,877,325	1.29 %	1.43	100
Mid Cap	44,785,779,522	31,116,575	5.21 %	3.66	400
Small Cap	14,419,591,538	21,997,075	4.24 %	6.89	1637
Mothers & Jasdaq	5,432,454,428	9,172,850	3.19 %	10.95	564
ETFs & REITs	7,065,879,829	1,458,012	2.92 %	2.32	95

All Market
3.2 %
Topix 100

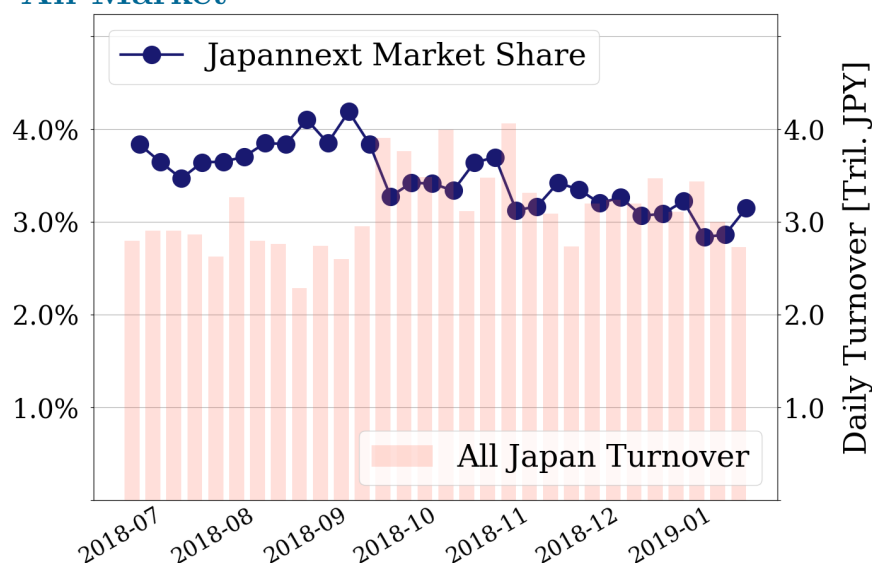
1.3 %
Nikkei 225

2.5 %

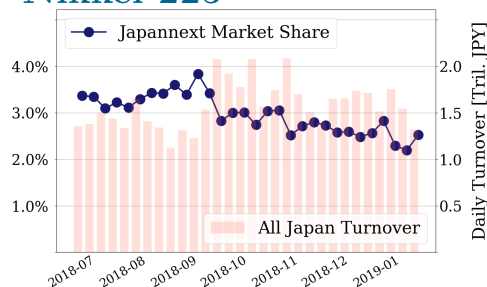
Topix 100



All Market



Nikkei 225



Top Stocks by Turnover

Stock	Value (JPY)	Share	PI (bps)
1570 NIKKEILV	9,228,891,850	1.89%	2.13
1357 NKDOUBLE	5,747,614,000	3.87%	1.63
6502 TOSHIBA	4,081,322,700	11.07%	4.60
9501 TEPCOHD	3,463,269,610	6.05%	3.69
4004 SHOWDEN	2,995,621,350	5.96%	4.33

Top Stocks by Market Share

Stock	Value (JPY)	Share	PI (bps)
7167 MEBUKIFG	946,030,750	18.28%	8.75
3323 RECOMM	171,567,150	17.66%	12.68
8359 82-BANK	462,175,490	16.43%	6.17
6773 PIONEER	159,915,320	15.72%	67.13
8572 ACOM	345,903,540	15.55%	7.32

Top Stocks by Price Improvement

Stock	Value (JPY)	Share	PI (bps)
2315 CAICA	110,318,940	13.72%	89.40
6773 PIONEER	159,915,320	15.72%	67.13
6740 JDI	407,704,450	8.90%	42.82
8704 TRADERS	135,441,230	7.56%	41.21
8585 OR.CORP	388,771,690	14.15%	24.63

Top Stocks by Savings

Stock	Value (JPY)	Share	Savings
4689 YAHOO J	2,926,677,070	14.83%	2,905,100
6502 TOSHIBA	4,081,322,700	11.07%	1,613,950
2768 SOJITZ	2,365,395,020	12.93%	1,504,080
6740 JDI	407,704,450	8.90%	1,405,190
1570 NIKKEILV	9,228,891,850	1.89%	1,378,292

- ▶ Analysis is based on SBI Japannext and Thomson Reuters data. Large Cap = TPX100, Mid Cap = TPX500 excl. TPX100, Small Cap = Section1 + Section2 excl. TPX500.
- ▶ All Japan Turnover = Japannext (J+X+U+N) + TSE (excl. Tostnet) + Chi-X (excl. Chi-Match, Chi-Select). Market Share = Japannext turnover / All Japan Turnover.
- ▶ Price Improvement (PI) and Savings (PI*volume) are calculated by comparing the execution price against the primary market's best bid for each sell or best offer for each buy at the point of execution from the taker's perspective. Reported PI is a value-weighted average. Names with weekly traded value less than 100,000,000 JPY are excluded from the rankings tables.

Top Stocks by Universe

Topix 100

Stock	Value (JPY)	Share	PI (bps)
8411 MIZUHO	1,835,951,200	1.87%	5.70
6273 SMC	1,003,760,500	2.37%	2.34
6861 KEYENCE	805,230,000	0.98%	2.90
8766 TOKIOMAR	673,580,180	1.72%	2.03
8058 MITBISI	715,910,420	1.74%	1.82
7751 CANON	869,466,700	2.0%	1.70
6501 HITACHI	1,240,987,150	1.15%	1.98
9983 FASTRET	1,811,952,760	0.79%	2.15
6758 SONY	845,813,980	0.79%	2.06
7974 NINTEND	2,873,392,000	0.91%	1.93

Topix Mid400

Stock	Value (JPY)	Share	PI (bps)
7167 MEBUKIFG	946,030,750	18.28%	8.75
4689 YAHOO J	2,926,677,070	14.83%	11.30
8410 SEVEN BK	1,132,817,940	14.6%	9.36
2768 SOJITZ	2,365,395,020	12.93%	8.12
6472 NTN	1,483,038,340	14.02%	7.26
7186 CONCRDIA	1,043,830,960	12.54%	7.15
9831 YAMDADK	1,751,845,850	14.29%	5.75
4005 SMICHEM	1,968,570,980	10.2%	5.44
3861 OJI HD	1,094,803,000	10.64%	4.83
3289 TOKYUFHD	738,553,780	10.01%	4.99

Small

Stock	Value (JPY)	Share	PI (bps)
6773 PIONEER	159,915,320	15.72%	67.13
8585 OR.CORP	388,771,690	14.15%	24.63
6632 JVCKW	171,169,490	15.16%	11.03
5563 NP-DENK	114,560,760	14.35%	10.40
7004 HIT-ZOS	349,089,440	14.2%	7.34
5017 FUJI OIL	101,181,150	13.32%	8.06
5480 NP-YAKN	502,884,030	12.48%	10.01
6727 WACOM	177,421,780	12.83%	6.34
6740 JDI	407,704,450	8.9%	42.82
5912 OSJBHD	138,442,470	11.85%	8.36

Mothers

Stock	Value (JPY)	Share	PI (bps)
3652 DMP	174,101,550	5.71%	22.40
8789 FINTECH	602,063,190	7.35%	14.71
3541 NOUSOUKN	265,318,500	4.13%	15.44
6030 ADVENTUR	134,266,900	3.76%	14.83
6572 RPA	172,912,450	3.59%	13.84
2160 GNI	262,645,150	9.28%	5.80
3911 AIMING	221,159,500	3.27%	11.48
4594 BRITPATH	686,516,400	4.03%	10.16
6033 EXTREME	449,537,100	4.41%	7.98
3989 SHARINGT	223,545,540	4.66%	6.96

JASDAQ

Stock	Value (JPY)	Share	PI (bps)
2315 CAICA	110,318,940	13.72%	89.40
2134 SUNCAPTL	63,417,610	10.65%	47.89
9263 VISIONAR	96,634,080	17.22%	33.91
8704 TRADERS	135,441,230	7.56%	41.21
3719 GEXEED	31,733,240	11.11%	22.83
4712 KEYH	60,828,690	11.67%	19.47
3323 RECOMM	171,567,150	17.66%	12.68
8739 SPARX G	33,425,020	13.9%	13.19
8256 MARUMIT	76,588,400	5.39%	22.37
6494 NFK-HD	51,132,150	4.61%	23.87

Second Section

Stock	Value (JPY)	Share	PI (bps)
9318 ASIADAVE	37,764,010	19.13%	570.70
3528 PROSPECT	92,850,290	24.5%	204.22
7647 ONTSU	41,736,430	2.43%	102.54
8925 ARDEPRO	33,054,570	18.02%	54.23
3647 GTHREEHD	32,939,270	12.12%	32.45
5955 YAMASNA	15,818,410	7.43%	41.10
6731 PIXELA	23,540,340	16.26%	19.95
6835 ALLIEDHD	93,837,380	11.6%	22.65
5940 FUJSASH	12,789,400	10.92%	23.49
3823 ACRODEA	30,351,190	5.11%	32.60

ETFs & REITs

Stock	Value (JPY)	Share	PI (bps)
1459 RK 225DI	757,458,860	9.45%	4.55
8963 INV	618,601,730	11.04%	2.50
3295 HULIC RE	174,244,650	6.79%	3.55
8960 UNITEDU	635,028,510	9.31%	1.84
3292 AEONREIT	233,067,290	7.74%	2.62
1365 DW 225LV	213,048,806	5.11%	4.19
3462 NMF	566,903,050	8.26%	2.05
8951 NBF	861,429,000	5.54%	3.50
8972 KENEDIXO	216,342,000	5.54%	3.29
8952 JRE	511,161,000	5.06%	3.47

- ▶ Best stocks are selected based on a combined score of turnover, market share and price improvement, and are listed here in order to illustrate a sample of stocks that trading on JNX venues can deliver benefits to our clients.
- ▶ The weights used in choosing the best stocks depend on the universe.