

# Market Report for the Week of January 20, 2020

## Daily Averages

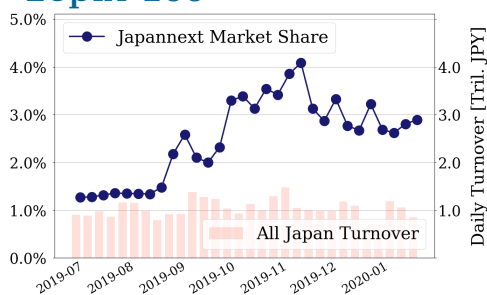
Universe	Value (JPY)	Volume	Share	PI (bps)	Symbols
All Market	121,171,571,237	98,108,532	5.26 %	4.23	3149
Large Cap	24,539,027,688	8,494,840	2.89 %	1.29	100
Mid Cap	51,419,378,176	28,477,000	7.16 %	3.48	400
Small Cap	20,229,209,862	22,917,720	6.40 %	5.74	1520
Mothers & Jasdaq	9,261,964,640	25,083,080	6.02 %	15.23	715
ETFs & REITs	10,548,336,883	2,969,852	5.31 %	2.37	110

All Market  
**5.3 %**

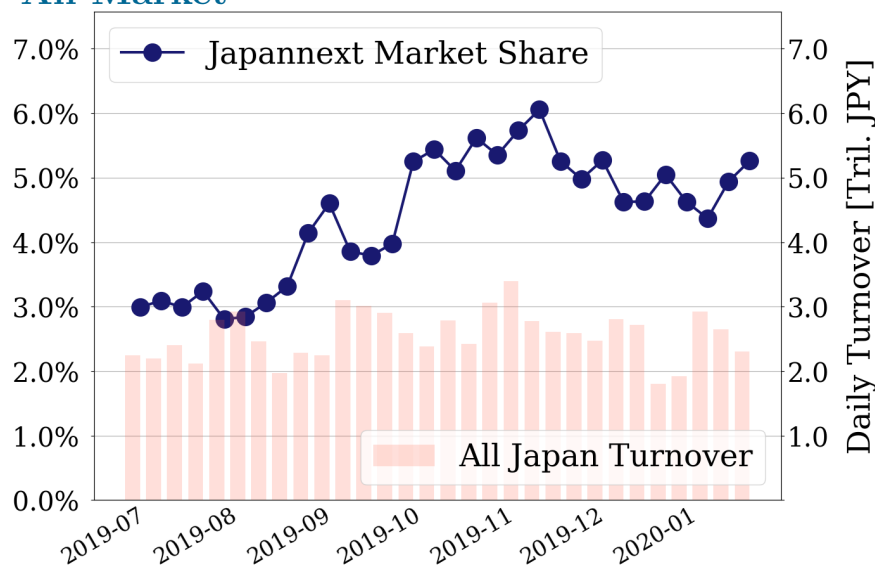
Topix 100  
**2.9 %**

Nikkei 225  
**4.4 %**

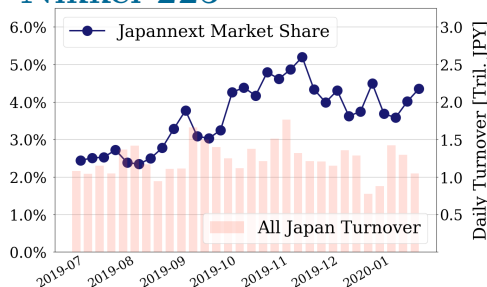
### Topix 100



### All Market



### Nikkei 225



## Top Stocks by Turnover

Stock	Value (JPY)	Share	PI (bps)
1570 NIKKEILV	22,525,026,129	4.92%	1.41
6857 ADVNTST	11,167,481,400	9.50%	4.22
1357 NKDOUBLE	10,311,591,859	10.85%	3.77
6502 TOSHIBA	8,581,094,200	10.26%	4.44
9984 SOFTBNKG	7,877,849,850	3.91%	1.32

## Top Stocks by Market Share

Stock	Value (JPY)	Share	PI (bps)
6628 ONKYO	376,710,330	30.99%	157.15
9973 KOZOSUSI	187,159,690	28.30%	156.03
7004 HIT-ZOS	665,689,550	24.88%	6.27
4558 CHUKYOI	173,516,780	21.95%	34.84
3528 PROSPECT	256,986,210	21.49%	92.48

## Top Stocks by Price Improvement

Stock	Value (JPY)	Share	PI (bps)
6628 ONKYO	376,710,330	30.99%	157.15
9973 KOZOSUSI	187,159,690	28.30%	156.03
3250 ADWORKS	102,738,480	0.82%	144.83
3528 PROSPECT	256,986,210	21.49%	92.48
8894 REVOLUTI	354,020,530	15.44%	66.56

## Top Stocks by Savings

Stock	Value (JPY)	Share	Savings
6628 ONKYO	376,710,330	30.99%	5,275,390
4564 OTS	4,852,447,280	10.13%	3,871,320
6857 ADVNTST	11,167,481,400	9.50%	3,173,300
1357 NKDOUBLE	10,311,591,859	10.85%	2,864,467
6502 TOSHIBA	8,581,094,200	10.26%	2,845,100

- ▶ Analysis is based on SBI Japannext and Thomson Reuters data. Large Cap = TPX100, Mid Cap = TPX500 excl. TPX100, Small Cap = Section1 + Section2 excl. TPX500.
- ▶ All Japan Turnover = Japannext (J+X+U+N) + TSE (excl. Tostnet) + Chi-X (excl. Chi-Match, Chi-Select). Market Share = Japannext turnover / All Japan Turnover.
- ▶ Price Improvement (PI) and Savings (PI\*volume) are calculated by comparing the execution price against the primary market's best bid for each sell or best offer for each buy at the point of execution from the taker's perspective. Reported PI is a value-weighted average. Names with weekly traded value less than 100,000,000 JPY are excluded from the rankings tables.

# Top Stocks by Universe

## Topix 100

Stock	Value (JPY)	Share	PI (bps)
9983 FASTRET	7,822,928,160	4.53%	1.62
7974 NINTEND	7,415,956,000	4.28%	1.42
6594 NIDEC	3,076,759,000	3.44%	1.43
4661 OLC	2,422,329,000	6.03%	1.49
9201 JAL	2,420,027,100	5.23%	1.74
6861 KEYENCE	2,291,744,000	3.25%	2.01
6752 PANASNIC	2,015,765,090	4.64%	1.27
6178 JPPOSTHD	1,725,158,450	6.96%	1.49
4568 1-SANKYO	1,562,300,440	3.17%	1.65
4519 CHUGAIP	1,515,913,100	4.32%	1.84

## Topix Mid400

Stock	Value (JPY)	Share	PI (bps)
4689 ZHD	3,665,046,160	10.61%	7.47
4217 HIT-CHM	3,181,010,900	21.3%	4.21
4005 SMICHEM	1,977,703,110	12.78%	7.22
9501 TEPCOHD	1,959,977,360	10.54%	7.57
7211 MMC	1,743,723,490	10.99%	6.94
2768 SOJITZ	1,078,440,730	11.29%	9.89
8358 SURGABK	1,006,237,510	11.37%	5.66
3938 LINE	883,482,600	10.63%	6.41
6472 NTN	812,108,620	17.08%	9.78
5803 FUJIKRA	779,228,950	15.13%	8.65

## Small

Stock	Value (JPY)	Share	PI (bps)
3672 ALTPLUS	1,186,442,870	12.35%	9.02
8585 OR.CORP	699,574,960	13.32%	17.19
7004 HIT-ZOS	665,689,550	24.88%	6.27
8698 MONEX G	552,693,160	12.86%	9.69
2337 ICHIGO	463,039,600	16.29%	5.46
6740 JDI	422,557,110	14.79%	46.51
6632 JVCKW	362,889,310	16.72%	10.67
8616 TT-FHD	270,545,680	13.0%	8.87
3632 GREE	176,961,760	15.19%	7.42
4714 RISO KY	167,410,360	17.17%	8.70

## Mothers

Stock	Value (JPY)	Share	PI (bps)
4564 OTS	4,852,447,280	10.13%	18.52
6255 NPC INC	635,012,850	10.47%	7.74
3689 IGNIS	465,243,990	14.68%	8.72
3558 LOCONDO	304,092,980	8.78%	9.13
7806 MTG	285,827,330	9.58%	10.42
4308 JSTREAM	257,515,860	12.16%	11.86
7172 JIA	249,006,320	17.28%	6.18
3935 EDIA	230,520,470	12.65%	11.77
4597 SOLASIA	207,150,940	15.27%	13.53
4596 KUBOTAPH	206,602,240	11.2%	7.20

## JASDAQ

Stock	Value (JPY)	Share	PI (bps)
2776 SHINTOHD	464,326,640	14.49%	25.82
7612 NUTS	379,146,370	18.54%	31.09
6628 ONKYO	376,710,330	30.99%	157.15
2134 SUNCAPTL	365,727,020	12.71%	26.26
4347 BR-MEDIA	364,873,170	16.77%	25.73
8704 TRADERS	331,355,110	16.12%	25.07
9973 KOZOSUSI	187,159,690	28.3%	156.03
4558 CHUKYOI	173,516,780	21.95%	34.84
6659 MEDIALNK	105,005,010	10.41%	23.53
4712 KEYH	96,134,170	17.58%	27.77

## Second Section

Stock	Value (JPY)	Share	PI (bps)
3747 INTERTRD	388,769,500	10.35%	14.84
8226 RIKEI	361,982,030	11.66%	11.98
8894 REVOLUTI	354,020,530	15.44%	66.56
9873 KFCHDJPN	283,987,650	12.04%	10.22
3528 PROSPECT	256,986,210	21.49%	92.48
3111 OMIKENS	151,985,850	5.95%	18.32
3825 REMIX	138,446,550	16.57%	13.57
1443 GIKENHD	90,849,200	11.33%	14.37
7859 ALMEDIO	87,336,620	10.31%	13.93
8925 ARDEPRO	81,971,730	21.57%	64.10

## ETFs & REITs

Stock	Value (JPY)	Share	PI (bps)
1357 NKDOUBLE	10,311,591,859	10.85%	3.77
1579 225 BULL	2,138,310,820	10.54%	1.45
8963 INV	1,596,663,480	9.48%	4.16
1459 RK 225DI	1,114,981,815	17.61%	6.56
8985 JHR	998,018,490	9.11%	3.46
8952 JRE	741,289,900	4.57%	3.02
3279 API	552,487,000	4.89%	3.85
8976 DAIWAOF	275,625,100	5.47%	2.74
3471 MITSUILP	260,860,550	3.54%	5.83
3287 HOSINORR	259,195,300	6.13%	3.65

- ▶ Best stocks are selected based on a combined score of turnover, market share and price improvement, and are listed here in order to illustrate a sample of stocks that trading on JNX venues can deliver benefits to our clients.
- ▶ The weights used in choosing the best stocks depend on the universe.