

Market Report for the Week of February 10, 2020

Daily Averages

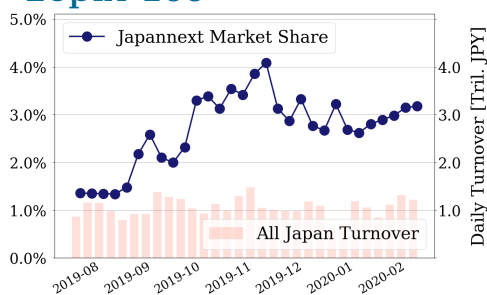
Universe	Value (JPY)	Volume	Share	PI (bps)	Symbols
All Market	156,845,542,480	118,572,363	5.24 %	3.98	3161
Large Cap	38,840,884,452	12,520,975	3.18 %	1.37	100
Mid Cap	64,031,361,662	36,720,225	7.01 %	3.66	399
Small Cap	24,722,733,678	35,323,050	6.15 %	5.72	1540
Mothers & Jasdaq	8,909,600,782	19,170,700	5.93 %	14.54	709
ETFs & REITs	15,283,782,043	6,040,867	6.56 %	2.57	112

All Market
5.2 %

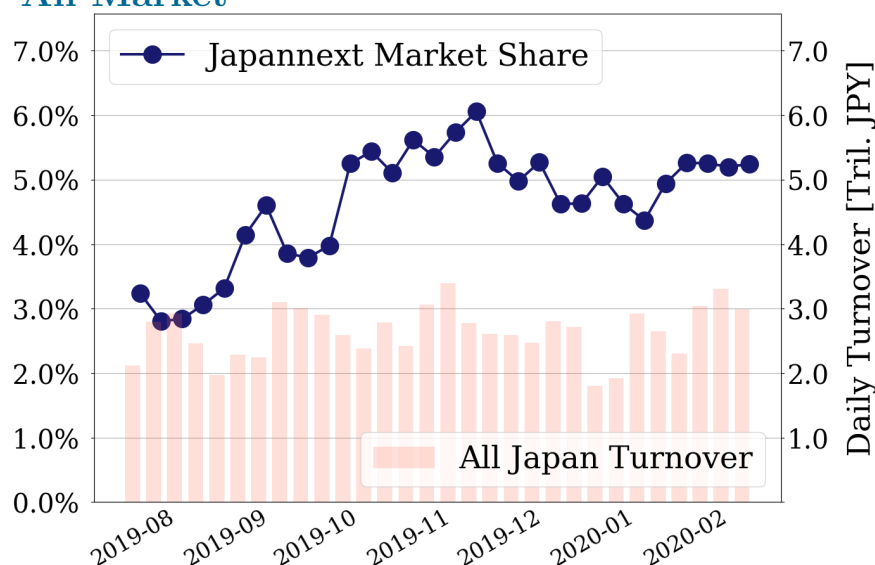
Topix 100
3.2 %

Nikkei 225
4.3 %

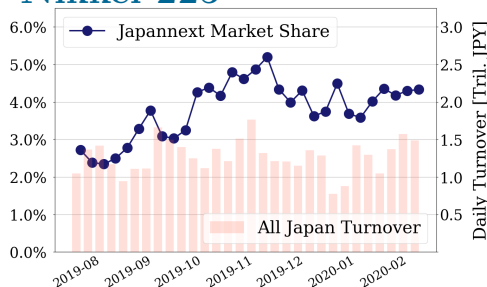
Topix 100



All Market



Nikkei 225



Top Stocks by Turnover

Stock	Value (JPY)	Share	PI (bps)
9984 SOFTBNKG	42,932,495,380	4.64%	1.84
1570 NIKKEILV	23,202,926,911	4.56%	1.28
1357 NKDOUBLE	17,960,397,022	17.76%	3.81
6857 ADVNTST	6,304,690,200	8.66%	4.79
9983 FASTRET	5,997,365,960	4.12%	1.71

Top Stocks by Market Share

Stock	Value (JPY)	Share	PI (bps)
8918 LAND	299,112,810	37.82%	223.47
6557 GBHD	162,705,210	36.84%	24.53
9973 KOZOSUSI	170,743,580	34.12%	138.80
1367 DW TPX2X	103,727,275	31.83%	1.42
1356 TPXBEAR2	576,646,864	30.32%	2.42

Top Stocks by Price Improvement

Stock	Value (JPY)	Share	PI (bps)
6628 ONKYO	205,890,350	27.13%	227.57
8918 LAND	299,112,810	37.82%	223.47
9973 KOZOSUSI	170,743,580	34.12%	138.80
8894 REVOLUTI	101,732,810	22.01%	100.52
8836 RISE	109,035,020	27.42%	92.74

Top Stocks by Savings

Stock	Value (JPY)	Share	Savings
1357 NKDOUBLE	17,960,397,022	17.76%	5,060,784
6628 ONKYO	205,890,350	27.13%	3,209,860
4689 ZHD	4,604,543,070	13.18%	2,326,110
1570 NIKKEILV	23,202,926,911	4.56%	2,142,285
6857 ADVNTST	6,304,690,200	8.66%	2,045,200

- ▶ Analysis is based on SBI Japannext and Thomson Reuters data. Large Cap = TPX100, Mid Cap = TPX500 excl. TPX100, Small Cap = Section1 + Section2 excl. TPX500.
- ▶ All Japan Turnover = Japannext (J+X+U+N) + TSE (excl. Tostnet) + Chi-X (excl. Chi-Match, Chi-Select). Market Share = Japannext turnover / All Japan Turnover.
- ▶ Price Improvement (PI) and Savings (PI*volume) are calculated by comparing the execution price against the primary market's best bid for each sell or best offer for each buy at the point of execution from the taker's perspective. Reported PI is a value-weighted average. Names with weekly traded value less than 100,000,000 JPY are excluded from the rankings tables.

Top Stocks by Universe

Topix 100

Stock	Value (JPY)	Share	PI (bps)
9984 SOFTBNKG	42,932,495,380	4.64%	1.84
9983 FASTRET	5,997,365,960	4.12%	1.71
7974 NINTEND	5,309,604,500	3.62%	1.65
7733 OLYMPUS	2,621,833,390	5.77%	1.39
7832 BANNAMHD	2,334,579,900	5.83%	1.97
6594 NIDEC	2,313,919,400	4.36%	1.44
6861 KEYENCE	2,198,704,500	3.93%	2.00
4661 OLC	2,161,956,000	5.03%	1.40
4519 CHUGAIP	2,122,851,200	4.87%	1.43
9437 DOCOMO	1,530,800,320	3.12%	1.71

Topix Mid400

Stock	Value (JPY)	Share	PI (bps)
8036 HIT-HT	4,868,653,300	20.23%	4.41
4689 ZHD	4,604,543,070	13.18%	7.54
4005 SMICHEM	1,918,469,450	10.78%	7.21
5406 KOBESTL	1,727,365,560	12.61%	6.38
3938 LINE	1,266,671,100	29.35%	6.86
2768 SOJITZ	1,234,962,820	14.39%	10.15
3861 OJI HD	1,208,174,600	14.47%	5.15
6472 NTN	965,053,760	18.94%	11.35
7211 MMC	930,756,310	11.16%	7.22
8358 SURGABK	815,899,890	11.52%	5.99

Small

Stock	Value (JPY)	Share	PI (bps)
3202 DAITOBO	4,225,936,120	11.37%	11.11
8698 MONEX G	605,054,470	17.69%	12.14
9424 JPN-COMM	454,105,690	13.19%	10.79
7004 HIT-ZOS	398,659,220	18.76%	6.14
8585 OR.CORP	372,070,360	13.31%	18.19
6632 JVCKW	353,600,430	16.78%	12.74
8918 LAND	299,112,810	37.82%	223.47
6740 JDI	276,547,320	14.39%	42.81
8616 TT-FHD	248,920,910	15.17%	9.31
6727 WACOM	163,142,720	15.87%	7.79

Mothers

Stock	Value (JPY)	Share	PI (bps)
4424 AMAZIA	1,298,054,700	9.42%	11.40
3689 IGNIS	545,190,570	12.37%	9.30
3914 JIG-SAW	388,539,700	9.21%	11.35
4308 JSTREAM	237,688,490	12.45%	9.49
3558 LOCONDO	233,032,920	10.28%	9.04
8922 JAM	225,562,230	16.36%	30.21
6232 ACSL	190,277,650	8.1%	14.36
7183 ANSINGUR	186,038,900	5.53%	22.64
4488 AIINSIDE	169,080,500	2.13%	56.18
6557 GBHD	162,705,210	36.84%	24.53

JASDAQ

Stock	Value (JPY)	Share	PI (bps)
2134 SUNCAPTL	332,665,750	13.39%	27.69
7612 NUTS	297,260,160	20.33%	31.21
8704 TRADERS	263,591,850	18.18%	26.43
2388 WEDGE-HD	212,608,110	21.3%	60.85
6628 ONKYO	205,890,350	27.13%	227.57
9973 KOZOSUSI	170,743,580	34.12%	138.80
5216 KURAMOT	111,453,750	10.38%	29.04
8836 RISE	109,035,020	27.42%	92.74
3323 RECOMM	93,897,440	24.03%	23.47
2673 YUMETAI	80,785,040	13.8%	22.88

Second Section

Stock	Value (JPY)	Share	PI (bps)
6656 INSPEC	2,196,463,900	12.84%	16.76
8226 RIKEI	382,303,410	13.83%	13.87
5103 SHOWA HD	196,334,320	14.62%	33.62
3010 KACHIKAI	137,461,610	15.42%	28.31
8894 REVOLUTI	101,732,810	22.01%	100.52
3528 PROSPECT	77,514,230	26.12%	116.79
9969 SHOKUBU	71,857,060	8.38%	32.22
6721 WINTEST	63,940,310	12.26%	13.47
8925 ARDEPRO	53,120,940	24.52%	66.31
5817 JMACS	51,245,340	10.09%	16.73

ETFs & REITs

Stock	Value (JPY)	Share	PI (bps)
1357 NKDOUBLE	17,960,397,022	17.76%	3.81
1459 RK 225DI	1,303,781,335	18.54%	6.13
8963 INV	1,013,919,640	11.82%	5.19
8985 JHR	877,936,330	10.12%	3.54
3283 PROLOGIS	696,995,700	7.29%	4.97
1356 TPXBEAR2	576,646,864	30.32%	2.42
3269 ADR	434,730,100	9.66%	3.25
1365 DW 225LV	367,216,140	20.12%	2.01
3471 MITSUILP	281,182,100	6.27%	7.58
3287 HOSINORR	203,897,000	7.87%	7.31

- ▶ Best stocks are selected based on a combined score of turnover, market share and price improvement, and are listed here in order to illustrate a sample of stocks that trading on JNX venues can deliver benefits to our clients.
- ▶ The weights used in choosing the best stocks depend on the universe.