

# Market Report for the Week of February 17, 2020

## Daily Averages

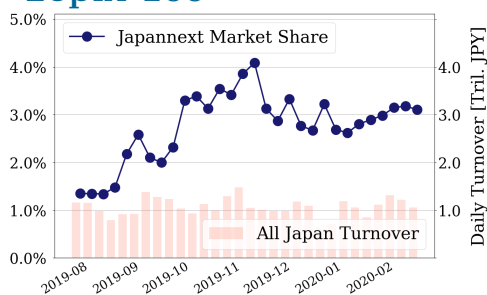
Universe	Value (JPY)	Volume	Share	PI (bps)	Symbols
All Market	152,347,231,407	113,573,792	5.50 %	4.04	3154
Large Cap	32,838,019,056	11,354,340	3.10 %	1.37	100
Mid Cap	57,226,215,718	34,059,920	6.87 %	3.62	399
Small Cap	25,041,869,528	28,615,760	6.69 %	5.87	1543
Mothers & Jasdaq	9,686,166,362	22,499,900	6.34 %	14.92	694
ETFs & REITs	23,570,118,215	9,047,323	8.01 %	2.41	115

All Market  
**5.5 %**

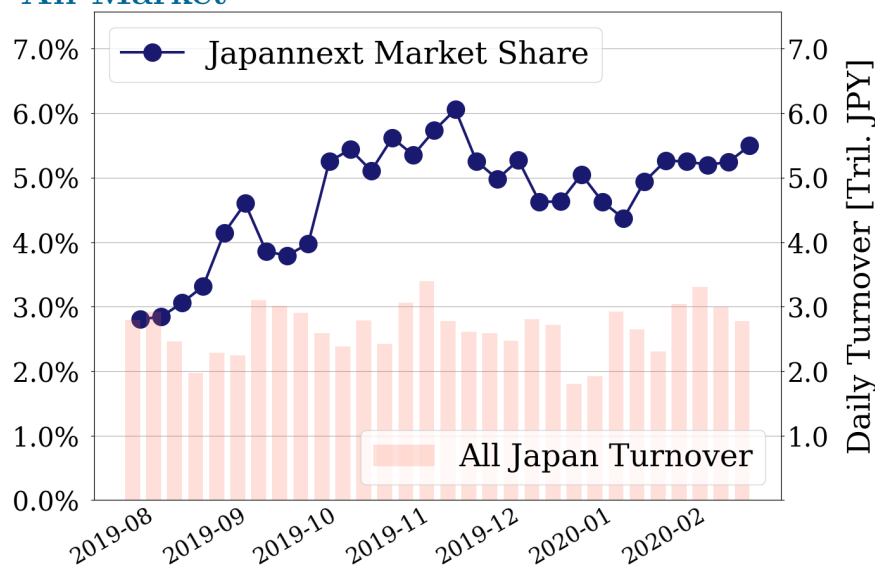
Topix 100  
**3.1 %**

Nikkei 225  
**4.3 %**

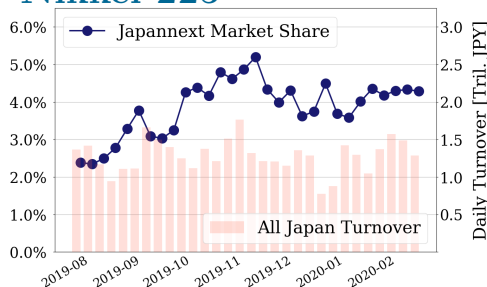
### Topix 100



### All Market



### Nikkei 225



## Top Stocks by Turnover

Stock	Value (JPY)	Share	PI (bps)
1570 NIKKEILV	56,368,698,783	7.14%	1.50
1357 NKDOUBLE	33,973,017,040	16.97%	3.66
9984 SOFTBNKG	21,270,104,820	4.07%	1.90
3436 SUMCO	9,581,248,630	5.75%	1.79
9983 FASTRET	8,801,807,960	4.99%	1.70

## Top Stocks by Market Share

Stock	Value (JPY)	Share	PI (bps)
6274 YAMAHAMR	5,400,703,510	53.03%	5.16
8894 REVOLUTI	152,884,610	31.56%	100.00
6628 ONKYO	175,029,580	30.23%	212.60
9973 KOZOSUSI	934,624,620	28.93%	116.52
7612 NUTS	345,471,740	25.45%	37.60

## Top Stocks by Price Improvement

Stock	Value (JPY)	Share	PI (bps)
6628 ONKYO	175,029,580	30.23%	212.60
3528 PROSPECT	218,153,450	22.37%	147.56
9973 KOZOSUSI	934,624,620	28.93%	116.52
8894 REVOLUTI	152,884,610	31.56%	100.00
5721 S-SCIEN	111,208,010	20.26%	49.50

## Top Stocks by Savings

Stock	Value (JPY)	Share	Savings
1357 NKDOUBLE	33,973,017,040	16.97%	9,592,225
1570 NIKKEILV	56,368,698,783	7.14%	6,794,215
9973 KOZOSUSI	934,624,620	28.93%	5,344,370
4689 ZHD	5,817,472,840	10.96%	3,032,650
6628 ONKYO	175,029,580	30.23%	2,918,020

- ▶ Analysis is based on SBI Japannext and Thomson Reuters data. Large Cap = TPX100, Mid Cap = TPX500 excl. TPX100, Small Cap = Section1 + Section2 excl. TPX500.
- ▶ All Japan Turnover = Japannext (J+X+U+N) + TSE (excl. Tostnet) + Chi-X (excl. Chi-Match, Chi-Select). Market Share = Japannext turnover / All Japan Turnover.
- ▶ Price Improvement (PI) and Savings (PI\*volume) are calculated by comparing the execution price against the primary market's best bid for each sell or best offer for each buy at the point of execution from the taker's perspective. Reported PI is a value-weighted average. Names with weekly traded value less than 100,000,000 JPY are excluded from the rankings tables.

# Top Stocks by Universe

## Topix 100

Stock	Value (JPY)	Share	PI (bps)
9984 SOFTBNKG	21,270,104,820	4.07%	1.90
9983 FASTRET	8,801,807,960	4.99%	1.70
7974 NINTEND	5,832,484,500	3.33%	1.63
4661 OLC	4,397,473,700	5.58%	1.53
6861 KEYENCE	2,790,776,000	3.56%	2.28
9201 JAL	2,350,406,460	6.31%	1.91
4901 FUJIFILM	2,055,840,660	4.14%	2.08
7201 NISSAN	2,018,698,690	3.71%	2.03
3382 7&I-HD	1,941,207,450	3.19%	1.86
9437 DOCOMO	1,934,894,030	3.32%	1.69

## Topix Mid400

Stock	Value (JPY)	Share	PI (bps)
4689 ZHD	5,817,472,840	10.96%	7.16
8036 HIT-HT	5,417,343,500	22.43%	4.57
4005 SMICHEM	2,345,228,380	11.79%	7.75
5406 KOBESTL	1,937,493,400	12.24%	6.89
2768 SOJITZ	1,466,039,550	11.92%	9.27
9501 TEPCOHD	1,446,301,920	10.56%	6.59
7211 MMC	1,318,099,350	13.13%	7.38
3861 OJI HD	1,312,543,040	12.87%	5.50
6472 NTN	1,041,337,750	17.44%	10.53
8331 CHIBABK	945,534,160	12.84%	5.44

## Small

Stock	Value (JPY)	Share	PI (bps)
6274 YAMAHAMR	5,400,703,510	53.03%	5.16
8515 AIFUL	1,666,078,600	12.56%	9.07
9424 JPN-COMM	992,780,420	12.77%	10.54
8585 OR.CORP	577,784,070	14.76%	21.26
8698 MONEX G	541,663,780	15.17%	11.81
6632 JVCKW	519,539,200	20.19%	12.46
7004 HIT-ZOS	329,599,770	16.61%	5.86
8616 TT-FHD	289,613,700	13.02%	9.42
6740 JDI	269,304,220	19.22%	49.39
6727 WACOM	190,677,640	12.79%	8.25

## Mothers

Stock	Value (JPY)	Share	PI (bps)
4424 AMAZIA	1,623,964,700	10.16%	9.23
4308 JSTREAM	1,178,269,810	13.38%	8.11
3689 IGNIS	1,073,440,890	9.95%	7.61
6033 EXTREME	722,117,760	13.61%	5.21
7707 PSS	541,638,640	8.95%	16.97
4434 SERVERWK	508,303,200	7.27%	15.54
4431 SMAREGI	379,449,450	6.89%	10.54
8922 JAM	326,956,560	14.1%	29.62
7779 CYBRDYNE	303,234,590	9.89%	6.56
4425 KUDAN	297,899,000	10.35%	13.62

## JASDAQ

Stock	Value (JPY)	Share	PI (bps)
9973 KOZOSUSI	934,624,620	28.93%	116.52
8746 1-COMOD	459,596,110	12.63%	24.27
7612 NUTS	345,471,740	25.45%	37.60
2134 SUNCAPTL	305,361,390	9.79%	21.24
4347 BR-MEDIA	303,765,140	14.66%	22.81
8704 TRADERS	197,326,710	17.51%	30.19
6628 ONKYO	175,029,580	30.23%	212.60
3323 RECOMM	173,392,100	18.66%	26.44
8186 OTSUKA	126,538,230	10.92%	29.38
2321 SOFTFROH	95,129,440	16.66%	19.79

## Second Section

Stock	Value (JPY)	Share	PI (bps)
3528 PROSPECT	218,153,450	22.37%	147.56
8894 REVOLUTI	152,884,610	31.56%	100.00
2338 BITONEG	129,269,540	9.62%	28.53
3825 REMIX	100,165,940	13.99%	15.67
9969 SHOKUBU	96,508,720	9.36%	32.68
8226 RIKEI	87,156,440	13.91%	13.83
5856 LIEH	86,201,010	13.96%	41.65
6343 FREESIA	58,862,120	10.55%	24.12
6721 WINTEST	54,555,000	10.76%	18.66
8925 ARDEPRO	48,391,480	22.75%	66.87

## ETFs & REITs

Stock	Value (JPY)	Share	PI (bps)
1357 NKDOUBLE	33,973,017,040	16.97%	3.66
1459 RK 225DI	3,202,605,560	22.08%	6.07
8963 INV	1,125,109,330	8.53%	5.10
1356 TPXBEAR2	963,205,363	19.47%	2.40
3283 PROLOGIS	641,881,550	6.64%	3.32
3269 ADR	602,090,400	8.34%	3.17
1365 DW 225LV	529,645,266	15.01%	1.93
3471 MITSUILP	245,839,600	6.2%	7.61
3226 ACCOMMO	225,027,100	6.65%	4.20
3287 HOSINORR	205,248,800	7.95%	4.51

- ▶ Best stocks are selected based on a combined score of turnover, market share and price improvement, and are listed here in order to illustrate a sample of stocks that trading on JNX venues can deliver benefits to our clients.
- ▶ The weights used in choosing the best stocks depend on the universe.