

## Market Report for the Week of June 01, 2020

### Daily Averages

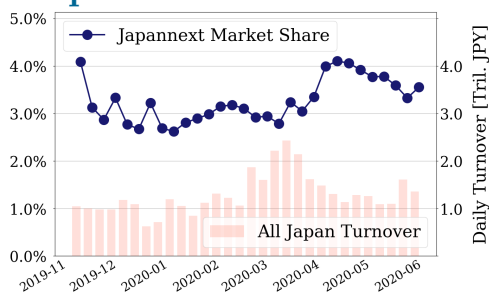
Universe	Value (JPY)	Volume	Share	PI (bps)	Symbols
All Market	219,895,484,312	188,798,044	6.07 %	3.93	3132
Large Cap	48,229,507,520	17,852,840	3.55 %	1.20	100
Mid Cap	66,487,241,006	43,464,600	7.10 %	3.55	398
Small Cap	28,014,686,982	34,043,300	6.83 %	4.47	1552
Mothers & Jasdq	19,778,576,376	40,058,660	6.29 %	8.87	669
ETFs & REITs	54,646,596,840	33,402,597	9.72 %	3.35	122

All Market  
**6.1 %**

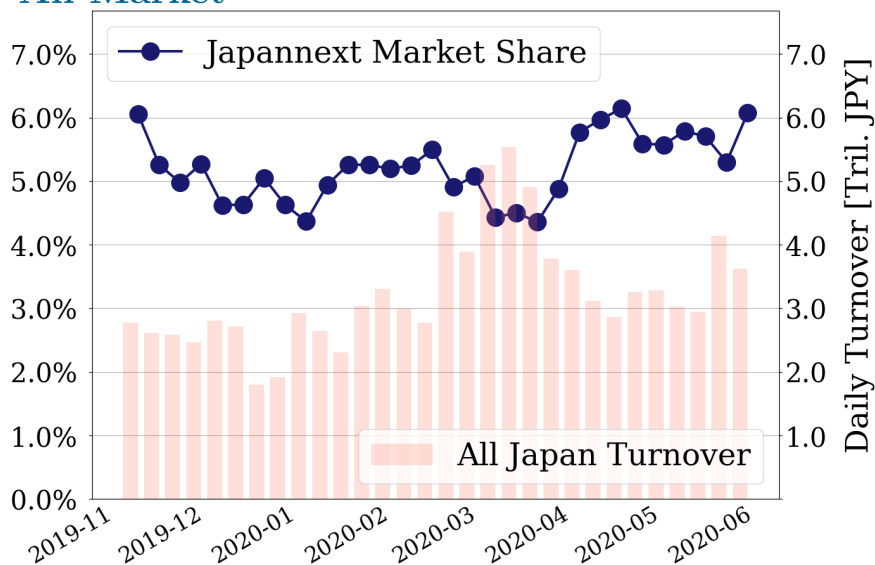
Topix 100  
**3.6 %**

Nikkei 225  
**4.4 %**

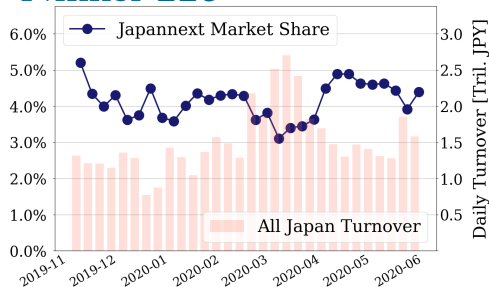
#### Topix 100



#### All Market



#### Nikkei 225



### Top Stocks by Turnover

Stock	Value (JPY)	Share	PI (bps)
1570 NFNKLV	134,828,096,410	9.65%	1.80
1357 NFNKDOUB	83,800,781,291	19.99%	4.56
9983 FASTRET	26,320,114,000	6.30%	1.66
9984 SOFTBNKG	20,603,525,240	2.83%	1.83
6920 LASRTEC	13,534,764,800	11.25%	2.28

### Top Stocks by Market Share

Stock	Value (JPY)	Share	PI (bps)
8918 LAND	229,857,310	46.37%	439.42
6740 JDI	138,682,850	31.74%	89.65
6628 ONKYO	274,749,470	28.66%	313.72
3606 RENOWN	261,290,570	28.38%	200.39
1580 225 BEAR	350,380,770	25.17%	5.42

### Top Stocks by Price Improvement

Stock	Value (JPY)	Share	PI (bps)
8918 LAND	229,857,310	46.37%	439.42
6628 ONKYO	274,749,470	28.66%	313.72
3606 RENOWN	261,290,570	28.38%	200.39
2315 CAICA	478,135,190	18.16%	116.47
3528 PROSPECT	605,067,500	21.76%	101.80

### Top Stocks by Savings

Stock	Value (JPY)	Share	Savings
1357 NFNKDOUB	83,800,781,291	19.99%	29,545,419
1570 NFNKLV	134,828,096,410	9.65%	19,830,087
1699 NFOIL	4,132,780,194	17.49%	12,878,173
8918 LAND	229,857,310	46.37%	6,782,610
6628 ONKYO	274,749,470	28.66%	6,570,700

- ▶ Analysis is based on Japannext and Thomson Reuters data. Large Cap = TPX100, Mid Cap = TPX500 excl. TPX100, Small Cap = Section1 + Section2 excl. TPX500.
- ▶ All Japan Turnover = Japannext (J+X+U+N) + TSE (excl. Tostnet) + Chi-X (excl. Chi-Match, Chi-Select). Market Share = Japannext turnover / All Japan Turnover.
- ▶ Price Improvement (PI) and Savings (PI\*volume) are calculated by comparing the execution price against the primary market's best bid for each sell or best offer for each buy at the point of execution from the taker's perspective. Reported PI is a value-weighted average. Names with weekly traded value less than 100,000,000 JPY are excluded from the rankings tables.

## Top Stocks by Universe

### Topix 100

Stock	Value (JPY)	Share	PI (bps)
9983 FASTRET	26,320,114,000	6.3%	1.66
9984 SOFTBNKG	20,603,525,240	2.83%	1.83
6861 KEYENCE	8,654,222,500	5.53%	1.40
8316 SMFG	4,532,406,000	3.56%	1.80
6098 RECRUIT	3,655,474,850	3.48%	1.53
6702 FUJITSU	3,307,873,900	4.4%	1.55
8306 MUFG	3,303,896,570	1.99%	2.27
6501 HITACHI	3,112,219,300	3.38%	1.84
6981 MURATA	2,735,227,200	2.93%	1.69
7201 NISSAN	2,628,173,210	3.62%	2.48

### Topix Mid400

Stock	Value (JPY)	Share	PI (bps)
4689 ZHD	5,562,550,680	11.17%	7.21
4005 SMICHEM	3,155,449,440	10.55%	9.36
9684 SQENIXHD	2,251,101,100	14.32%	5.34
9501 TEPCOHD	2,247,768,920	14.5%	8.07
7211 MMC	2,206,744,140	12.78%	9.94
2768 SOJITZ	2,046,053,560	15.55%	12.70
9831 YAMDADK	1,873,814,860	12.89%	5.87
5406 KOBESTL	1,462,258,400	10.95%	7.55
3938 LINE	1,436,143,300	20.86%	7.07
6472 NTN	1,238,226,510	14.87%	13.17

### Small

Stock	Value (JPY)	Share	PI (bps)
8515 AIFUL	1,794,514,340	13.0%	11.36
8698 MONEX G	534,950,450	14.36%	11.32
8585 OR.CORP	507,090,990	17.03%	26.27
2337 ICHIGO	502,237,700	13.46%	9.71
9424 JPN-COMM	388,660,870	11.9%	12.79
6632 JVCKW	369,133,260	16.98%	19.08
3202 DAITOBO	317,354,590	13.11%	15.00
8616 TT-FHD	292,419,190	13.45%	12.61
4714 RISO KY	283,863,550	14.25%	9.31
8918 LAND	229,857,310	46.37%	439.42

### Mothers

Stock	Value (JPY)	Share	PI (bps)
3990 UUUM	2,323,028,130	9.64%	3.36
3911 AIMING	1,760,799,830	11.72%	3.14
4583 CHIOME	1,573,166,980	10.13%	4.86
2370 MEDINET	1,505,159,870	13.31%	20.59
3993 PKSHA	1,007,472,800	12.92%	4.39
3906 ALBERT	948,561,300	8.78%	4.04
4564 OTS	760,852,010	9.76%	17.65
6182 ROZETTA	705,884,650	10.81%	3.78
3998 SURALANT	685,520,200	8.01%	3.42
4571 NANOCARI	599,934,550	9.65%	6.89

### JASDAQ

Stock	Value (JPY)	Share	PI (bps)
2134 SUNCAPTL	2,508,102,100	14.57%	21.31
9973 KOZOSUSI	712,840,690	20.71%	100.22
2315 CAICA	478,135,190	18.16%	116.47
7610 TAY TWO	337,258,840	19.2%	55.37
4347 BR-MEDIA	318,904,640	17.0%	24.31
6628 ONKYO	274,749,470	28.66%	313.72
8704 TRADERS	169,002,500	13.14%	26.23
3323 RECOMM	120,231,800	12.73%	26.27
7612 NUTS	106,838,560	15.18%	79.35
2776 SHINTOHD	101,117,370	15.39%	19.37

### Second Section

Stock	Value (JPY)	Share	PI (bps)
1757 CREA HD	1,144,667,510	15.21%	57.03
3528 PROSPECT	605,067,500	21.76%	101.80
3825 REMIX	309,356,070	14.73%	23.52
8925 ARDEPRO	275,858,090	23.91%	59.52
8894 REVOLUTI	210,659,470	20.98%	100.16
6721 WINTEST	88,246,150	14.91%	10.86
6731 PIXELA	70,280,920	22.3%	129.77
5940 FUJSASH	68,043,330	11.8%	33.19
9318 ASIADAVE	58,090,110	28.13%	688.86
8226 RIKEI	55,851,190	11.46%	12.44

### ETFs & REITs

Stock	Value (JPY)	Share	PI (bps)
1357 NFNKDOUB	83,800,781,291	19.99%	4.56
1671 WTI ETF	4,225,500,183	10.38%	2.70
1699 NFOIL	4,132,780,194	17.49%	48.01
1459 RK 225DI	3,775,207,733	16.87%	6.01
1458 RK 225LV	3,730,339,122	8.48%	2.85
1365 DW 225LV	1,158,887,325	12.85%	3.25
8985 JHR	1,068,622,375	6.44%	4.64
3309 SEKSUIHR	382,237,100	6.91%	4.32
3227 MIDCITY	359,475,070	6.33%	4.43
1580 225 BEAR	350,380,770	25.17%	5.42

- ▶ Best stocks are selected based on a combined score of turnover, market share and price improvement, and are listed here in order to illustrate a sample of stocks that trading on JNX venues can deliver benefits to our clients.
- ▶ The weights used in choosing the best stocks depend on the universe.