

## Market Report for the Week of March 22, 2021

### Daily Averages

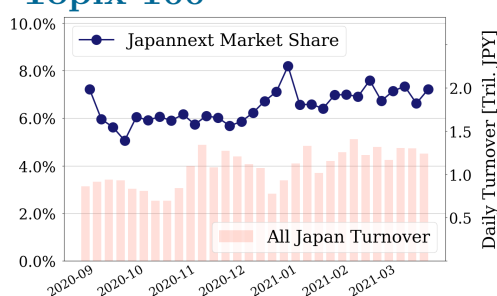
Universe	Turnover(JPY)	Volume	Share	PI (bps)	Symbols
All Market	258,501,719,328	172,551,924	8.34 %	3.59	3479
Topix100	89,523,313,786	21,536,400	7.21 %	0.64	99
Nikkei 225	109,296,412,990	45,721,320	7.34 %	1.64	225
TopixMid400	66,440,211,062	36,783,060	7.96 %	3.36	398
Small & Others	34,051,823,450	35,960,640	8.35 %	4.36	1637
Mothers & Jasdaj	29,887,637,546	30,138,880	11.73 %	8.04	862
ETFs & REITs	35,452,188,362	17,927,144	10.70 %	5.97	125

All Market  
**8.3 %**

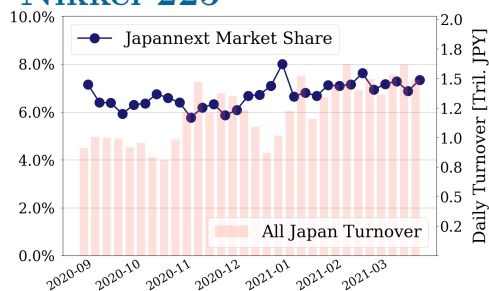
Topix 100  
**7.2 %**

Nikkei 225  
**7.3 %**

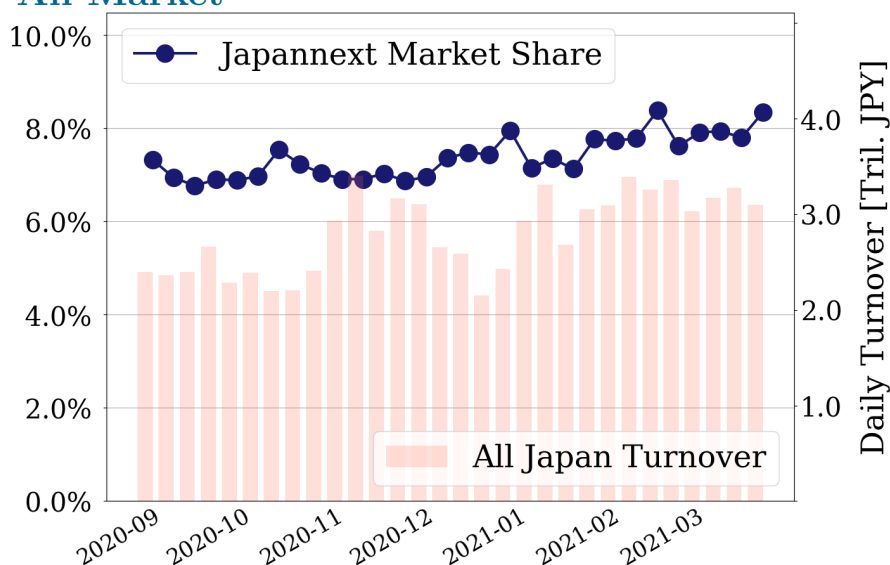
#### Topix 100



#### Nikkei 225



#### All Market



#### Top Stocks by Turnover

Stock	Turnover(JPY)	Share	PI (bps)
1570 NFNKLV	90,162,369,500	13.55%	6.65
9983 FASTRET	54,278,897,900	12.47%	0.48
9984 SOFTBNKG	52,889,943,970	8.40%	0.35
7974 NINTEND	32,502,032,000	11.78%	0.48
3689 IGNIS	27,730,138,210	68.49%	1.59

#### Top Stocks by Market Share

Stock	Turnover(JPY)	Share	PI (bps)
3689 IGNIS	27,730,138,210	68.49%	1.59
9318 ASIADAVE	883,267,770	43.73%	475.87
6628 ONKYOHE	379,763,310	40.68%	285.79
8918 LAND	225,944,930	38.49%	419.06
6664 OPTELECT	154,233,540	35.41%	7.84

#### Top Stocks by Price Improvement

Stock	Turnover(JPY)	Share	PI (bps)
9318 ASIADAVE	883,267,770	43.73%	475.87
8918 LAND	225,944,930	38.49%	419.06
6628 ONKYOHE	379,763,310	40.68%	285.79
8894 REVOLUTI	107,568,850	30.91%	94.92
2315 CAICA	1,257,666,370	32.19%	87.91

#### Top Stocks by Savings

Stock	Turnover(JPY)	Share	Savings
1570 NFNKLV	90,162,369,500	13.55%	47,220,960
9318 ASIADAVE	883,267,770	43.73%	28,076,740
1357 NFNKDOUB	23,837,366,560	14.96%	17,430,573
2315 CAICA	1,257,666,370	32.19%	8,557,220
6628 ONKYOHE	379,763,310	40.68%	7,682,940

- ▶ Analysis is based on Japannext and Refinitiv data. Small & Others = First Section - TPX500.
- ▶ All Japan Turnover = Japannext (J+X+U+N) + TSE (excl. Tostnet) + Chi-X (excl. Chi-Match, Chi-Select).  
Market Share = Japannext turnover / All Japan Turnover.
- ▶ Opening and Closing auction trades on the TSE are excluded from calculations.
- ▶ Price Improvement (PI) and Savings (PI\*volume) are calculated by comparing the execution price against the primary market's best bid for each sell or best offer for each buy at the point of execution from the taker's perspective. Reported PI is a value-weighted average. Names with weekly traded value less than 100,000,000 JPY are excluded from the rankings tables.

## Top 10 Stocks by Turnover

### Topix 100

Stock	Turnover(JPY)	Share	PI (bps)
9983 FASTRET	54,278,897,900	12.47%	0.48
9984 SOFTBNKG	52,889,943,970	8.40%	0.35
7974 NINTEND	32,502,032,000	11.78%	0.48
8035 TKOELCN	21,146,776,690	8.81%	0.39
8316 SMFG	13,052,099,130	7.35%	0.62
7203 TOYOTA	12,827,756,790	5.72%	0.40
6758 SONY	12,791,298,330	7.89%	0.49
2413 M3	12,342,330,170	12.12%	0.53
8306 MUFG	10,250,282,070	3.62%	1.71
6594 NIDEC	9,685,580,130	9.86%	0.46

### Nikkei 225

Stock	Turnover(JPY)	Share	PI (bps)
9983 FASTRET	54,278,897,900	12.47%	0.48
9984 SOFTBNKG	52,889,943,970	8.40%	0.35
8035 TKOELCN	21,146,776,690	8.81%	0.39
9101 NYKLINE	14,342,819,780	13.99%	3.42
8316 SMFG	13,052,099,130	7.35%	0.62
7203 TOYOTA	12,827,756,790	5.72%	0.40
6758 SONY	12,791,298,330	7.89%	0.49
2413 M3	12,342,330,170	12.12%	0.53
4755 RAKUTEN	10,397,701,410	11.72%	1.86
8306 MUFG	10,250,282,070	3.62%	1.71

### Topix Mid400

Stock	Turnover(JPY)	Share	PI (bps)
6920 LASRTEC	17,605,337,530	11.69%	1.88
9101 NYKLINE	14,342,819,780	13.99%	3.42
9201 JAL	12,401,821,850	9.58%	1.21
4755 RAKUTEN	10,397,701,410	11.72%	1.86
6857 ADVNTST	8,888,948,320	10.84%	2.99
9104 MTI-OSK	6,964,036,610	12.01%	3.31
1605 INPEX	6,338,442,140	12.09%	3.52
6723 RENESAS	5,866,647,420	8.34%	2.34
6502 TOSHIBA	5,024,382,550	8.71%	3.32
7211 MMC	4,931,534,320	15.68%	9.08

### Small & Others

Stock	Turnover(JPY)	Share	PI (bps)
8698 MONEX G	13,592,525,120	12.38%	2.43
2929 PHARMA F	9,546,131,100	10.34%	3.66
9107 K-LINE	2,988,537,070	10.23%	2.05
9519 RENOVA	2,704,498,700	10.96%	4.12
7004 HIT-ZOS	2,469,885,440	11.64%	3.12
6070 CAREERL	2,360,475,280	11.57%	1.82
6584 SANOH	2,308,465,240	12.08%	2.70
9603 H.I.S.	2,236,589,790	8.16%	1.52
3903 GUMI	2,150,103,920	15.13%	3.75
3962 CHANGE	2,109,967,300	10.32%	4.83

### Mothers

Stock	Turnover(JPY)	Share	PI (bps)
3689 IGNIS	27,730,138,210	68.49%	1.59
4176 COCONALA	6,219,502,440	4.35%	1.90
4477 BASE	6,203,294,300	15.86%	4.95
4488 AIINSIDE	5,740,907,000	22.24%	7.59
4934 PANTI-AG	4,478,952,300	12.69%	2.48
4563 ANGES	3,384,637,860	10.37%	2.47
4478 FREEE	3,334,042,400	8.52%	5.18
4588 ONCOLYS	3,224,439,840	12.14%	3.13
4385 MERCARI	3,064,841,000	10.32%	5.46
2160 GNI	2,408,634,590	12.07%	2.17

### JASDAQ

Stock	Turnover(JPY)	Share	PI (bps)
4582 SYMBIO	12,583,008,690	10.99%	3.09
2315 CAICA	1,257,666,370	32.19%	87.91
2702 MCDNALD	1,094,653,120	12.53%	6.07
2484 DEMAECAN	1,027,614,180	12.01%	1.96
6659 MEDIALNK	922,084,750	13.69%	5.21
2437 SHINWISE	894,484,260	6.94%	6.58
6890 FERROTEC	798,216,590	10.83%	3.03
7519 GOYJOINT	751,179,630	11.09%	14.84
6324 HARMONC	660,504,900	8.71%	7.70
1407 WEST HD	611,415,600	10.48%	8.04

### Second Section

Stock	Turnover(JPY)	Share	PI (bps)
7625 DINING	1,323,192,430	8.08%	9.28
6366 CHIYODA	1,139,486,850	12.50%	5.40
3856 ABALANCE	1,055,857,200	16.10%	4.47
6993 DAIKOKYA	925,312,900	12.76%	59.80
9318 ASIADAVE	883,267,770	43.73%	475.87
3825 REMIX	806,825,100	19.45%	13.91
2375 GIGWORKS	693,056,610	12.16%	4.34
7412 ATOM	501,963,280	9.62%	2.52
6835 ALLIEDHD	332,384,070	10.66%	16.57
8226 RIKEI	316,992,910	11.86%	12.24

### ETFs & REITs

Stock	Turnover(JPY)	Share	PI (bps)
1570 NFNKLV	90,162,369,500	13.55%	6.65
1357 NFNKDOUB	23,837,366,560	14.96%	9.97
1458 RK 225LV	16,885,024,506	17.05%	2.32
1360 NKBEAR-2	7,791,967,626	10.51%	3.50
1579 225 BULL	5,229,081,630	8.23%	2.24
1459 RK 225DI	4,403,290,477	14.61%	2.66
1568 TPX BULL	3,196,862,110	7.36%	1.12
1321 NFNK225	2,631,616,429	3.56%	4.41
1306 NFTOPIX	1,850,367,152	4.99%	1.34
1699 NFOIL	1,695,273,852	33.26%	26.67

## Top 10 Stocks by Market Share

### Topix 100

Stock	Share	Turnover(JPY)	PI (bps)
9983 FASTRET	12.47%	54,278,897,900	0.48
9022 JR CENT	12.39%	7,854,151,830	0.39
2413 M3	12.12%	12,342,330,170	0.53
7974 NINTEND	11.78%	32,502,032,000	0.48
9021 JR WEST	11.23%	4,387,322,840	0.63
9531 TKO-GAS	11.01%	1,923,717,400	0.85
9202 ANA	10.65%	8,722,242,930	0.92
9020 JR EAST	10.45%	5,660,018,410	0.52
6594 NIDEC	9.86%	9,685,580,130	0.46
4661 OLC	9.54%	5,745,455,650	0.41

### Nikkei 225

Stock	Share	Turnover(JPY)	PI (bps)
9412 SKYPER J	16.52%	385,079,550	6.32
7211 MMC	15.68%	4,931,534,320	9.08
9101 NYKLINE	13.99%	14,342,819,780	3.42
4751 CYBER A	13.75%	4,460,833,580	4.02
7762 CITIZEN	12.84%	636,156,610	8.11
9983 FASTRET	12.47%	54,278,897,900	0.48
9022 JR CENT	12.39%	7,854,151,830	0.39
2413 M3	12.12%	12,342,330,170	0.53
1605 INPEX	12.09%	6,338,442,140	3.52
3289 TOKYUFHD	12.08%	1,047,770,790	5.09

### Topix Mid400

Stock	Share	Turnover(JPY)	PI (bps)
8410 SEVEN BK	16.47%	1,871,417,110	12.41
7211 MMC	15.68%	4,931,534,320	9.08
9101 NYKLINE	13.99%	14,342,819,780	3.42
8473 SBI	13.82%	3,101,745,730	4.93
4751 CYBER A	13.75%	4,460,833,580	4.02
9831 YAMADAHD	12.81%	1,535,842,750	4.90
7780 MENICON	12.77%	318,164,390	5.15
4552 JCR	12.37%	2,078,269,840	4.46
9697 CAPCOM	12.22%	3,058,663,100	3.49
1605 INPEX	12.09%	6,338,442,140	3.52

### Small & Others

Stock	Share	Turnover(JPY)	PI (bps)
8918 LAND	38.49%	225,944,930	419.06
6839 FUNAI E	20.82%	1,763,254,050	3.51
9412 SKYPER J	16.52%	385,079,550	6.32
3315 NIP-COKE	16.14%	308,405,530	20.77
8848 LEOPC21	15.31%	382,576,560	20.24
2353 NP-PARK	15.30%	178,710,410	15.58
3903 GUMI	15.13%	2,150,103,920	3.75
7816 SNOWPEAK	15.11%	1,228,710,400	5.27
8585 OR.CORP	15.01%	484,373,300	16.68
6077 N FIELD	14.58%	258,976,960	1.97

### Mothers

Stock	Share	Turnover(JPY)	PI (bps)
3689 IGNIS	68.49%	27,730,138,210	1.59
4488 AIINSIDE	22.24%	5,740,907,000	7.59
2370 MEDINET	20.80%	145,501,160	57.38
2586 FRUTA	18.98%	234,324,880	8.35
3911 AIMING	17.89%	392,793,520	5.47
4393 BOI	17.88%	277,453,560	5.65
3993 PKSHA	17.53%	859,126,280	6.37
4485 JTOWER	16.69%	2,181,010,100	4.25
7806 MTG	16.40%	191,161,860	3.95
4594 BRITPATH	16.15%	238,829,550	13.37

### JASDAQ

Stock	Share	Turnover(JPY)	PI (bps)
6628 ONKYOHE	40.68%	379,763,310	285.79
6664 OPTELECT	35.41%	154,233,540	7.84
2315 CAICA	32.19%	1,257,666,370	87.91
9973 KOZOSUSI	25.50%	210,570,750	73.73
2303 DAWN	20.75%	167,650,520	8.61
9436 OKINCEL	18.79%	189,982,600	8.39
8186 OTSUKA	16.48%	162,073,030	9.99
2656 VECTOR	15.67%	118,389,670	8.60
4978 REPROCEL	15.35%	263,984,090	5.70
4764 NEXUSB	14.41%	171,922,310	14.22

### Second Section

Stock	Share	Turnover(JPY)	PI (bps)
9318 ASIADAVE	43.73%	883,267,770	475.87
8894 REVOLUTI	30.91%	107,568,850	94.92
3825 REMIX	19.45%	806,825,100	13.91
8925 ARDEPRO	17.93%	152,248,520	52.55
3856 ABALANCE	16.10%	1,055,857,200	4.47
9873 KFCHDJPN	15.41%	167,973,870	3.74
3823 ACRODEA	14.59%	108,437,930	10.96
2345 KUSHIM	14.12%	232,535,790	4.53
2354 YE DIGIT	13.86%	102,547,360	5.02
9904 VERITE	13.54%	157,216,460	6.13

### ETFs & REITs

Stock	Share	Turnover(JPY)	PI (bps)
1699 NFOIL	33.26%	1,695,273,852	26.67
1458 RK 225LV	17.05%	16,885,024,506	2.32
1365 DW 225LV	16.52%	1,432,666,627	3.51
1356 TPXBEAR2	16.11%	711,675,259	3.46
1357 NFNKDOUB	14.96%	23,837,366,560	9.97
1459 RK 225DI	14.61%	4,403,290,477	2.66
1615 NFBANKS	13.57%	755,680,580	21.35
1570 NFNKLV	13.55%	90,162,369,500	6.65
1671 WTI ETF	13.07%	1,239,898,495	2.82
1540 JPP GLD	12.37%	356,567,390	5.18

## Top 10 Stocks by PI

### Topix 100

Stock	PI (bps)	Turnover(JPY)	Share
5020 ENEOS	2.60	2,237,923,900	3.74%
8601 DAIWASG	2.26	392,643,560	3.63%
8308 RESONA	2.22	1,069,724,190	3.22%
4689 ZHD	2.18	3,165,614,500	5.53%
7201 NISSAN	1.98	1,828,619,120	3.67%
3402 TORAY	1.83	597,297,260	3.80%
6869 SYSMEX	1.77	710,334,600	4.95%
8604 NOMRAHD	1.76	1,045,300,190	2.13%
8306 MUFG	1.71	10,250,282,070	3.62%
6178 JPPOSTHD	1.62	4,665,820,760	8.62%

### Nikkei 225

Stock	PI (bps)	Turnover(JPY)	Share
7211 MMC	9.08	4,931,534,320	15.68%
6472 NTN	8.89	1,000,301,110	10.49%
2768 SOJITZ	8.69	1,979,707,360	8.81%
7762 CITIZEN	8.11	636,156,610	12.84%
9501 TEPCOHD	7.28	4,143,183,880	11.24%
7186 CONCRDIA	6.81	644,803,880	7.07%
3103 UNITIKA	6.65	282,362,820	10.04%
9412 SKYPER J	6.32	385,079,550	16.52%
4704 TREND	6.17	1,734,860,530	10.14%
6506 YASKAWA	5.99	3,124,473,580	11.61%

### Topix Mid400

Stock	PI (bps)	Turnover(JPY)	Share
8410 SEVEN BK	12.41	1,871,417,110	16.47%
7167 MEBUKIFG	9.97	1,155,469,750	9.17%
6005 MIURA	9.39	634,916,740	11.76%
7211 MMC	9.08	4,931,534,320	15.68%
6472 NTN	8.89	1,000,301,110	10.49%
2768 SOJITZ	8.69	1,979,707,360	8.81%
9072 NIKKONHD	7.64	106,974,440	6.23%
9501 TEPCOHD	7.28	4,143,183,880	11.24%
8334 GUNMABK	7.28	284,186,760	9.53%
7186 CONCRDIA	6.81	644,803,880	7.07%

### Small & Others

Stock	PI (bps)	Turnover(JPY)	Share
8918 LAND	419.06	225,944,930	38.49%
3315 NIP-COKE	20.77	308,405,530	16.14%
8848 LEOPC21	20.24	382,576,560	15.31%
8585 OR.CORP	16.68	484,373,300	15.01%
2353 NP-PARK	15.58	178,710,410	15.30%
8713 FIDEA HD	14.98	157,573,820	12.26%
8524 NORTHPBK	12.84	333,492,940	13.81%
7527 SYSSOFT	11.87	596,410,940	10.43%
6632 JVCKW	11.62	526,635,800	12.17%
7238 AKEBONO	11.44	308,047,430	11.86%

### Mothers

Stock	PI (bps)	Turnover(JPY)	Share
2370 MEDINET	57.38	145,501,160	20.80%
6597 HPC SYS	24.32	110,353,500	6.12%
7353 KIYO	22.73	128,660,000	6.83%
4564 OTS	17.84	133,032,820	12.19%
7078 INC	16.94	1,323,810,250	9.92%
4597 SOLASIA	14.27	568,621,040	14.40%
7694 ITSUMO	13.63	113,703,200	7.25%
4594 BRITPATH	13.37	238,829,550	16.15%
7695 KOUKANDE	13.22	675,574,500	6.90%
7095 MACBEEP	12.42	180,347,500	6.82%

### JASDAQ

Stock	PI (bps)	Turnover(JPY)	Share
6628 ONKYOHE	285.79	379,763,310	40.68%
2315 CAICA	87.91	1,257,666,370	32.19%
9973 KOZOSUSI	73.73	210,570,750	25.50%
4499 SPEEE	17.85	211,682,400	5.63%
4174 APPIRITS	17.38	322,443,800	6.62%
7519 GOYOINT	14.84	751,179,630	11.09%
4764 NEXUSB	14.22	171,922,310	14.41%
9827 LILCOLR	12.48	170,560,670	11.18%
3807 FISCO	12.22	124,265,270	13.33%
8186 OTSUKA	9.99	162,073,030	16.48%

### Second Section

Stock	PI (bps)	Turnover(JPY)	Share
9318 ASIADVEVE	475.87	883,267,770	43.73%
8894 REVOLUTI	94.92	107,568,850	30.91%
6993 DAIKOKYA	59.80	925,312,900	12.76%
8925 ARDEPRO	52.55	152,248,520	17.93%
6835 ALLIEDHD	16.57	332,384,070	10.66%
3825 REMIX	13.91	806,825,100	19.45%
3021 PCNET	13.56	111,356,300	9.01%
8226 RIKEI	12.24	316,992,910	11.86%
3823 ACRODEA	10.96	108,437,930	14.59%
7625 DINING	9.28	1,323,192,430	8.08%

### ETFs & REITs

Stock	PI (bps)	Turnover(JPY)	Share
1699 NFOIL	26.67	1,695,273,852	33.26%
1615 NFBANKS	21.35	755,680,580	13.57%
1357 NFNKDOUB	9.97	23,837,366,560	14.96%
1570 NFNKLV	6.65	90,162,369,500	13.55%
1540 JPP GLD	5.18	356,567,390	12.37%
1321 NFNK225	4.41	2,631,616,429	3.56%
3471 MITSUILP	4.36	213,754,900	5.59%
8985 JHR	4.35	604,537,030	8.24%
1571 NFNKIV	4.04	290,071,756	5.30%
3282 COMFORIA	3.93	122,491,950	4.71%