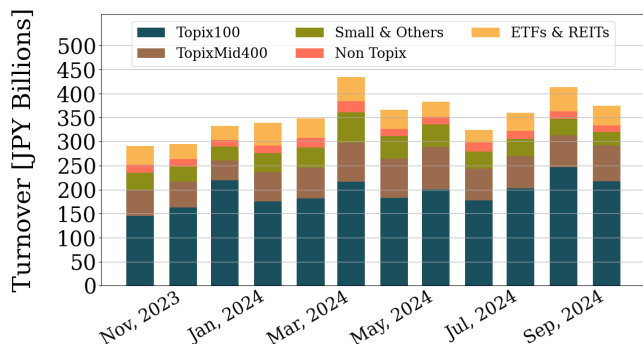


Market Report for September, 2024

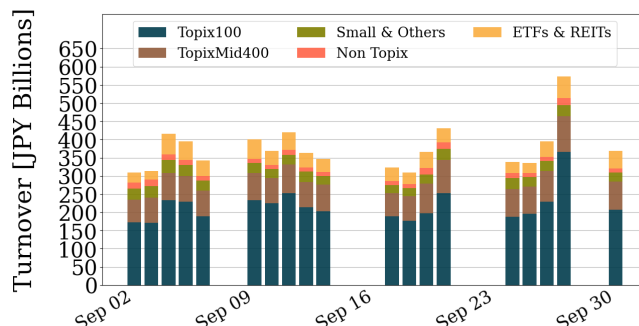
Trading Summary

Total Monthly Turnover(JPY)	7,119,816,571,535	Total Monthly Volume	4,332,092,405
Average Daily Turnover(JPY)	374,727,187,976	Average Daily Volume	228,004,863
Average PI (bps)	2.2	Average Traded Symbols	3276

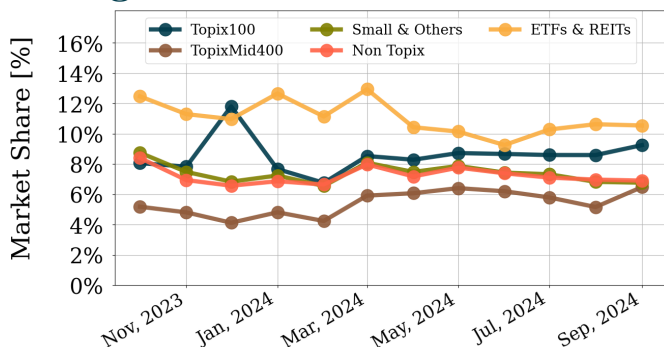
Average Daily Turnover



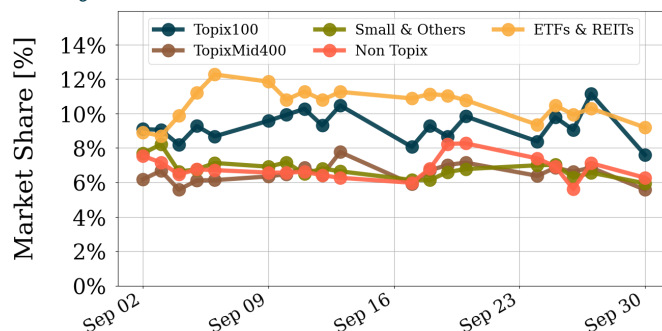
Daily Turnover



Average Market Share



Daily Market Share



Top Stocks by Turnover

Stock	Turnover(JPY)	Share	PI (bps)
6920 LASRTEC	772,123,779,110	13.25%	0.47
6146 DISCO	510,081,038,940	13.37%	0.57
1570 NFNKLV	390,047,399,036	10.05%	0.92
7011 MHI	360,913,256,660	13.95%	1.11
8035 TKOELCN	333,596,665,140	10.83%	0.50

Top Stocks by Market Share

Stock	Turnover(JPY)	Share	PI (bps)
8918 LAND	3,931,075,860	86.14%	597.92
7647 ONTSU	139,439,330	63.75%	156.58
9973 KOZOHD	684,764,090	47.63%	226.92
8890 RAYSUM	18,174,592,800	45.46%	7.41
8107 KIMRTAN	198,794,850	37.73%	214.96

Top Stocks by Price Improvement

Stock	Turnover(JPY)	Share	PI (bps)
8918 LAND	3,931,075,860	86.14%	597.92
9973 KOZOHD	684,764,090	47.63%	226.92
8107 KIMRTAN	198,794,850	37.73%	214.96
6740 JDI	1,266,016,910	26.24%	184.83
5721 S-SCIEN	123,633,990	22.87%	171.37

Top Stocks by Savings

Stock	Turnover(JPY)	Share	Savings
1357 NFNKDOUB	88,489,306,583	34.98%	228,041,949
8918 LAND	3,931,075,860	86.14%	59,875,100
8894 REVOLUTI	6,762,947,230	27.15%	55,897,740
7011 MHI	360,913,256,660	13.95%	32,522,030
6920 LASRTEC	772,123,779,110	13.25%	32,034,700

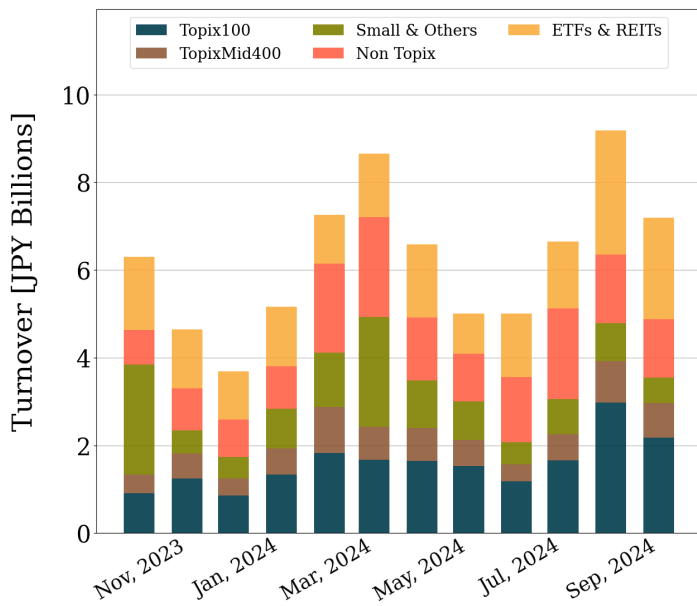
- ▶ Analysis is based on Japannext and LSEG data. Small & Others = Topix - TPX500.
- ▶ All Japan Turnover = Japannext (J+X+U+N) + TSE (excl. Tostnet) + CBOE (CBOE-Alpha + CBOE-Select excl. CBOE-Match). Night-time Session (N) is treated as the following business day.
Market Share = Japannext turnover / All Japan Turnover.
- ▶ Opening and Closing auction trades on the TSE are excluded from calculations.
- ▶ Price Improvement (PI) and Savings (PI*volume) are calculated by comparing the execution price against the primary market's best bid for each sell or best offer for each buy at the point of execution from the taker's perspective. Reported PI is a value-weighted average. Names with monthly traded value less than 100,000,000 JPY are excluded from the rankings tables.

Night-Time Market Report for September, 2024

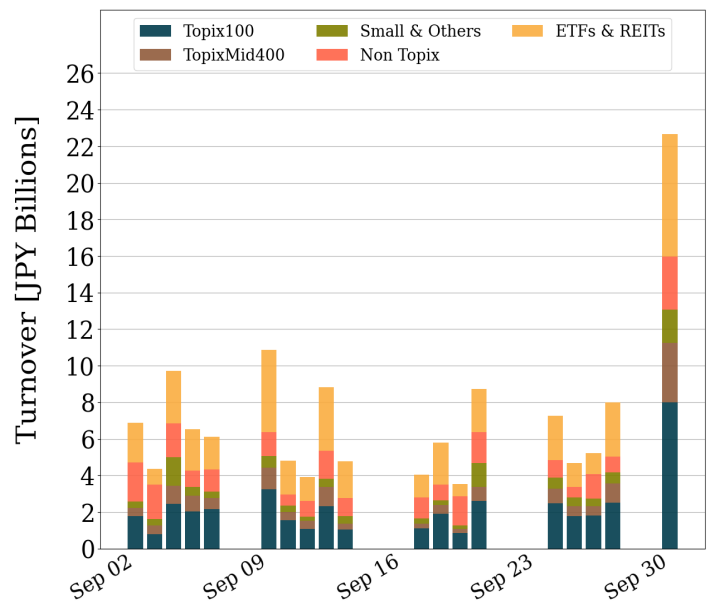
Trading Summary

Total Monthly Turnover(JPY)	136,714,763,669	Total Monthly Volume	471,008,471
Average Daily Turnover(JPY)	7,195,513,877	Average Daily Volume	24,789,920
Average Quoted Symbols	3816	Average Traded Symbols	918

Average Nightly Turnover



Nightly Turnover



Top Stocks by Turnover

Stock	Turnover(JPY)	Share
1570 NFNKLV	17,681,433,784	0.46%
1357 NFNKDOUB	10,364,633,868	4.10%
1360 NKBEAR-2	5,600,360,025	1.55%
8035 TKOELCN	4,246,398,800	0.14%
7011 MHI	3,735,592,750	0.14%
7203 TOYOTA	3,239,810,750	0.24%
1579 225 BULL	3,005,116,885	1.44%
8316 SMFG	2,881,875,260	0.23%
8306 MUFU	2,809,387,450	0.20%
1458 RK 225LV	2,700,460,240	0.99%
1459 RK 225DI	2,596,170,049	1.24%
6920 LASRTEC	2,556,991,600	0.04%
7776 CELLSEED	2,301,753,410	2.46%
9984 SOFTBNKG	1,852,808,440	0.10%
2586 FRUTA	1,744,804,560	4.32%

Top Stocks by Market Share

Stock	Turnover(JPY)	Share
8918 LAND	1,448,924,290	31.75%
9679 HORAI	950,400	24.84%
4754 TOSNET	4,995,000	22.57%
7040 SUN LIFE	3,003,000	21.54%
3823 WHYHOWDO	68,537,670	16.84%
9973 KOZOHD	180,828,510	12.58%
3261 GRANDES	156,990,070	10.04%
9476 CHUOKEI	6,627,110	8.48%
1757 SOKENACE	84,746,510	8.43%
9242 MEDIA RI	9,883,120	8.29%
2134 KITAHAMA	423,421,350	8.22%
8995 MAKOTOCN	24,490,240	7.78%
4563 ANGES	954,667,930	7.42%
7847 GRAPHIT	3,975,230	6.85%
8107 KIMRTAN	34,565,260	6.56%

- ▶ Analysis is based on Japannext and LSEG data. Small & Others = Topix - TPX500. Only Night-Time market is included.
- ▶ Night market session is treated as the following business day.

Top 10 Stocks by Turnover

Topix 100

Stock	Turnover(JPY)	Share	PI (bps)
6920 LASRTEC	772,123,779,110	13.25%	0.47
6146 DISCO	510,081,038,940	13.37%	0.57
7011 MHI	360,913,256,660	13.95%	1.11
8035 TKOELCN	333,596,665,140	10.83%	0.50
6857 ADVNTST	219,588,177,730	11.43%	0.64
9984 SOFTBNKG	204,984,764,920	11.44%	0.48
8306 MUFG	120,205,638,160	8.40%	1.31
7203 TOYOTA	119,094,242,630	8.85%	0.82
9983 FASTRET	83,597,379,940	6.40%	0.51
8316 SMFG	79,632,167,810	6.47%	0.42

Topix Mid400

Stock	Turnover(JPY)	Share	PI (bps)
4385 MERCARI	153,276,710,450	15.18%	1.10
7013 IHI	112,056,040,890	13.03%	0.72
7012 KHI	103,299,705,860	12.39%	0.80
5803 FUJIKRA	80,453,501,860	11.49%	0.94
6526 SOCIONXT	63,619,878,650	12.29%	0.95
9104 MTI-OSK	54,734,522,940	8.92%	0.75
9107 K-LINE	41,170,309,980	11.41%	1.20
7735 SCREEN	38,843,790,190	7.84%	1.21
4755 RAKUTENG	38,161,041,580	6.32%	1.67
3697 SHIFT	32,910,018,200	11.83%	3.10

Small & Others

Stock	Turnover(JPY)	Share	PI (bps)
3778 SAKURA	63,416,448,400	8.02%	3.62
6315 TOWA	25,319,826,400	8.79%	5.17
7003 MTI E&S	20,066,480,130	8.90%	2.42
3498 KASUMIGA	15,546,958,500	6.39%	3.75
6525 KOKUSAI	14,000,060,190	7.24%	4.51
7014 NAMURA	7,624,182,830	5.80%	2.08
6871 MICRONI	7,428,741,050	8.35%	4.60
9229 SUNWELS	7,044,903,990	5.41%	2.77
4506 SMIPHARM	5,279,471,040	8.71%	5.84
7581 SAIZERY	4,950,123,950	8.67%	5.74

Non Topix

Stock	Turnover(JPY)	Share	PI (bps)
8890 RAYSUM	18,174,592,800	45.46%	7.41
5595 IQPS	8,583,962,210	5.26%	2.04
7776 CELLSEED	7,109,691,370	7.60%	3.65
215A TIMEE	7,079,821,540	3.68%	2.34
8894 REVOLUTI	6,762,947,230	27.15%	114.43
2586 FRUTA	6,014,026,020	14.88%	24.13
7163 SBISUMIS	5,979,419,120	7.35%	4.09
4894 CUORIPS	5,311,873,000	6.09%	5.96
4592 SANBIO	4,676,357,080	6.28%	3.87
4107 ISECHEM	4,574,269,300	7.39%	4.68

ETFs & REITs

Stock	Turnover(JPY)	Share	PI (bps)
1570 NFNKLV	390,047,399,036	10.05%	0.92
1357 NFNKDOUB	88,489,306,583	34.98%	35.81
1360 NKBEAR-2	57,925,717,232	16.07%	3.00
1579 225 BULL	38,491,122,124	18.41%	3.82
1458 RK 225LV	37,024,894,117	13.53%	1.30
1459 RK 225DI	29,291,527,510	13.98%	7.82
1321 NFNK225	19,615,257,735	5.83%	1.49
1306 NFTOPIX	7,365,499,223	7.46%	0.55
2621 IS20YUS	5,690,948,171	13.27%	1.94
1329 IS225	5,441,512,805	12.09%	1.57

Prime

Stock	Turnover(JPY)	Share	PI (bps)
6920 LASRTEC	772,123,779,110	13.25%	0.47
6146 DISCO	510,081,038,940	13.37%	0.57
7011 MHI	360,913,256,660	13.95%	1.11
8035 TKOELCN	333,596,665,140	10.83%	0.50
6857 ADVNTST	219,588,177,730	11.43%	0.64
9984 SOFTBNKG	204,984,764,920	11.44%	0.48
4385 MERCARI	153,276,710,450	15.18%	1.10
8306 MUFG	120,205,638,160	8.40%	1.31
7203 TOYOTA	119,094,242,630	8.85%	0.82
7013 IHI	112,056,040,890	13.03%	0.72

Standard

Stock	Turnover(JPY)	Share	PI (bps)
8890 RAYSUM	18,174,592,800	45.46%	7.41
7014 NAMURA	7,624,182,830	5.80%	2.08
8894 REVOLUTI	6,762,947,230	27.15%	114.43
7163 SBISUMIS	5,979,419,120	7.35%	4.09
4107 ISECHEM	4,574,269,300	7.39%	4.68
8918 LAND	3,931,075,860	86.14%	597.92
2702 MCDNALD	3,854,157,500	9.88%	4.77
6324 HARMONC	2,544,327,420	7.87%	5.64
6227 AIMECHAT	2,474,741,210	5.82%	3.79
3350 METAPLNT	2,443,107,110	8.90%	3.89

Growth

Stock	Turnover(JPY)	Share	PI (bps)
5595 IQPS	8,583,962,210	5.26%	2.04
7776 CELLSEED	7,109,691,370	7.60%	3.65
215A TIMEE	7,079,821,540	3.68%	2.34
2586 FRUTA	6,014,026,020	14.88%	24.13
4894 CUORIPS	5,311,873,000	6.09%	5.96
4592 SANBIO	4,676,357,080	6.28%	3.87
5253 COVER	4,124,277,580	5.16%	1.86
2160 GNI	4,065,531,200	4.68%	3.20
4575 CANBAS	3,418,099,340	5.27%	5.72
4597 SOLASIA	3,346,333,400	24.66%	76.94

Top 10 Stocks by Market Share

Topix 100

Stock	Share	Turnover(JPY)	PI (bps)
7011 MHI	13.95%	360,913,256,660	1.11
6146 DISCO	13.37%	510,081,038,940	0.57
6920 LASRTEC	13.25%	772,123,779,110	0.47
9984 SOFTBNKG	11.44%	204,984,764,920	0.48
6857 ADVNTST	11.43%	219,588,177,730	0.64
8035 TKOELCN	10.83%	333,596,665,140	0.50
9101 NYKLINE	9.90%	56,350,003,440	0.76
9843 NITORIHD	9.47%	37,512,445,060	0.94
2914 JT	9.29%	21,745,388,610	0.85
5401 NSTEEL	9.16%	26,195,595,380	1.00

Topix Mid400

Stock	Share	Turnover(JPY)	PI (bps)
4385 MERCARI	15.18%	153,276,710,450	1.10
7013 IHI	13.03%	112,056,040,890	0.72
7012 KHI	12.39%	103,299,705,860	0.80
6526 SOCIONXT	12.29%	63,619,878,650	0.95
3697 SHIFT	11.83%	32,910,018,200	3.10
5803 FUJIKRA	11.49%	80,453,501,860	0.94
9107 K-LINE	11.41%	41,170,309,980	1.20
7240 NOK	11.35%	1,740,082,110	2.04
9509 HKD-PWR	11.34%	19,157,103,010	2.48
9104 MTI-OSK	8.92%	54,734,522,940	0.75

Small & Others

Stock	Share	Turnover(JPY)	PI (bps)
8918 LAND	86.14%	3,931,075,860	597.92
8107 KIMRTAN	37.73%	198,794,850	214.96
9055 ALPSLOG	34.05%	1,635,139,200	6.07
6740 JDI	26.24%	1,266,016,910	184.83
8155 MIMS SC	25.82%	298,199,800	7.61
6362 ISII IR	25.72%	537,297,200	3.97
5721 S-SCIEN	22.87%	123,633,990	171.37
9068 MARZN S	14.40%	334,481,950	7.49
4714 RISO KY	13.84%	162,516,220	15.88
9704 AGORA HG	13.60%	150,329,930	70.07

Non Topix

Stock	Share	Turnover(JPY)	PI (bps)
7647 ONTSU	63.75%	139,439,330	156.58
9973 KOZOHD	47.63%	684,764,090	226.92
8890 RAYSUM	45.46%	18,174,592,800	7.41
3823 WHYHOWDO	37.21%	151,492,870	124.83
1491 CHUGAIM	34.84%	123,517,960	138.30
1757 SOKENACE	32.69%	328,596,240	142.13
8836 RISE	31.40%	267,660,120	167.41
6993 DAIKOKYA	28.24%	829,581,620	146.21
2134 KITAHAMA	27.73%	1,427,697,870	165.25
8894 REVOLUTI	27.15%	6,762,947,230	114.43

ETFs & REITs

Stock	Share	Turnover(JPY)	PI (bps)
1357 NFNKDOUB	34.98%	88,489,306,583	35.81
1569 TPX BEAR	27.06%	577,429,822	2.42
2624 IF225QTR	20.53%	133,090,850	8.97
1579 225 BULL	18.41%	38,491,122,124	3.82
1360 NKBEAR-2	16.07%	57,925,717,232	3.00
1580 225 BEAR	15.57%	2,303,726,786	1.79
1459 RK 225DI	13.98%	29,291,527,510	7.82
1366 IF 225DI	13.93%	3,122,551,944	12.38
1368 IF TPXDI	13.93%	323,660,171	8.91
1458 RK 225LV	13.53%	37,024,894,117	1.30

Prime

Stock	Share	Turnover(JPY)	PI (bps)
9055 ALPSLOG	34.05%	1,635,139,200	6.07
6740 JDI	26.24%	1,266,016,910	184.83
8155 MIMS SC	25.82%	298,199,800	7.61
4385 MERCARI	15.18%	153,276,710,450	1.10
9068 MARZN S	14.40%	334,481,950	7.49
7011 MHI	13.95%	360,913,256,660	1.11
4714 RISO KY	13.84%	162,516,220	15.88
6146 DISCO	13.37%	510,081,038,940	0.57
8338 TSUKUBAB	13.32%	326,635,460	13.43
6920 LASRTEC	13.25%	772,123,779,110	0.47

Standard

Stock	Share	Turnover(JPY)	PI (bps)
8918 LAND	86.14%	3,931,075,860	597.92
7647 ONTSU	63.75%	139,439,330	156.58
9973 KOZOHD	47.63%	684,764,090	226.92
8890 RAYSUM	45.46%	18,174,592,800	7.41
8107 KIMRTAN	37.73%	198,794,850	214.96
3823 WHYHOWDO	37.21%	151,492,870	124.83
1491 CHUGAIM	34.84%	123,517,960	138.30
1757 SOKENACE	32.69%	328,596,240	142.13
8836 RISE	31.40%	267,660,120	167.41
6993 DAIKOKYA	28.24%	829,581,620	146.21

Growth

Stock	Share	Turnover(JPY)	PI (bps)
4597 SOLASIA	24.66%	3,346,333,400	76.94
4564 OTS	24.06%	1,396,842,680	87.43
4563 ANGES	19.70%	2,535,283,740	42.73
4268 EDGETECH	19.39%	504,750,230	4.64
2370 MEDINET	18.99%	1,571,256,480	74.06
3261 GRANDES	18.76%	293,460,920	6.01
4485 JTOWER	17.02%	2,161,620,850	6.59
4586 MEDRX	15.17%	340,499,140	25.51
2586 FRUTA	14.88%	6,014,026,020	24.13
4881 FUNPEP	12.89%	1,002,603,990	14.71

Top 10 Stocks by PI

Topix 100

Stock	PI (bps)	Turnover(JPY)	Share
9432 NTT	7.28	18,671,241,080	4.49%
7201 NISSAN	2.63	10,331,647,290	4.24%
4689 LY CORP	2.52	1,710,508,510	2.62%
6273 SMC	1.89	23,664,529,000	7.46%
3407 ASA-KSI	1.83	3,308,179,420	5.95%
8308 RESONA	1.83	10,994,686,770	5.23%
2413 M3	1.81	9,912,042,050	9.12%
5020 ENEOS	1.55	3,853,692,850	2.51%
4188 MTBCM G	1.54	1,897,124,330	2.81%
6752 PANASONIC	1.49	7,843,540,500	5.42%

Topix Mid400

Stock	PI (bps)	Turnover(JPY)	Share
8279 YAOKO	4.30	378,020,580	4.98%
9601 SHOCHIK	4.15	293,839,490	3.52%
8424 FUYO-GL	4.14	396,093,500	4.56%
6472 NTN	4.10	339,415,630	2.30%
9435 HIKARIT	4.01	1,482,199,400	3.72%
2181 PERSOLHD	3.78	432,129,790	1.77%
8410 SEVEN BK	3.58	749,903,460	2.64%
6395 TADANO	3.47	133,612,140	3.75%
3697 SHIFT	3.10	32,910,018,200	11.83%
7205 HINOMTR	2.94	321,153,070	1.83%

Small & Others

Stock	PI (bps)	Turnover(JPY)	Share
8918 LAND	597.92	3,931,075,860	86.14%
8107 KIMRTAN	214.96	198,794,850	37.73%
6740 JDI	184.83	1,266,016,910	26.24%
5721 S-SCIEN	171.37	123,633,990	22.87%
9704 AGORA HG	70.07	150,329,930	13.60%
3315 NIP-COKE	31.29	254,668,630	7.13%
7238 AKEBONO	24.97	127,078,010	6.45%
1435 ROBOTHOM	23.88	154,374,050	11.14%
9424 JPN-COMM	20.92	435,754,240	9.35%
2930 TATSUJIN	18.41	144,574,370	9.23%

Non Topix

Stock	PI (bps)	Turnover(JPY)	Share
9973 KOZOHD	226.92	684,764,090	47.63%
8836 RISE	167.41	267,660,120	31.40%
2134 KITAHAMA	165.25	1,427,697,870	27.73%
7647 ONTSU	156.58	139,439,330	63.75%
6993 DAIKOKYA	146.21	829,581,620	28.24%
1757 SOKENACE	142.13	328,596,240	32.69%
1491 CHUGAIM	138.30	123,517,960	34.84%
3823 WHYHOWDO	124.83	151,492,870	37.21%
8894 REVOLUTI	114.43	6,762,947,230	27.15%
4564 OTS	87.43	1,396,842,680	24.06%

ETFs & REITs

Stock	PI (bps)	Turnover(JPY)	Share
1357 NFNKDOUB	35.81	88,489,306,583	34.98%
1366 IF 225DI	12.38	3,122,551,944	13.93%
2624 IF225QTR	8.97	133,090,850	20.53%
1368 IF TPXDI	8.91	323,660,171	13.93%
1459 RK 225DI	7.82	29,291,527,510	13.98%
1655 ISS&P500	7.33	1,041,079,086	5.57%
1571 NFNKIV	7.15	1,824,042,798	11.99%
8976 DAIWAOF	5.38	869,332,500	12.82%
8952 JRE	5.25	3,720,769,000	10.66%
3296 NP REIT	5.11	685,304,300	9.86%

Prime

Stock	PI (bps)	Turnover(JPY)	Share
6740 JDI	184.83	1,266,016,910	26.24%
3315 NIP-COKE	31.29	254,668,630	7.13%
7238 AKEBONO	24.97	127,078,010	6.45%
9424 JPN-COMM	20.92	435,754,240	9.35%
2930 TATSUJIN	18.41	144,574,370	9.23%
2353 NP-PARK	16.12	792,908,830	7.89%
4714 RISO KY	15.88	162,516,220	13.84%
2982 ADWORKSG	14.17	106,235,770	8.17%
3656 KLAB	14.09	240,129,900	7.97%
8338 TSUKUBAB	13.43	326,635,460	13.32%

Standard

Stock	PI (bps)	Turnover(JPY)	Share
8918 LAND	597.92	3,931,075,860	86.14%
9973 KOZOHD	226.92	684,764,090	47.63%
8107 KIMRTAN	214.96	198,794,850	37.73%
5721 S-SCIEN	171.37	123,633,990	22.87%
8836 RISE	167.41	267,660,120	31.40%
2134 KITAHAMA	165.25	1,427,697,870	27.73%
7647 ONTSU	156.58	139,439,330	63.75%
6993 DAIKOKYA	146.21	829,581,620	28.24%
1757 SOKENACE	142.13	328,596,240	32.69%
1491 CHUGAIM	138.30	123,517,960	34.84%

Growth

Stock	PI (bps)	Turnover(JPY)	Share
4564 OTS	87.43	1,396,842,680	24.06%
4597 SOLASIA	76.94	3,346,333,400	24.66%
2370 MEDINET	74.06	1,571,256,480	18.99%
4594 BRITPATH	57.16	106,932,180	12.80%
4563 ANGES	42.73	2,535,283,740	19.70%
4576 DWTI	36.49	149,727,410	9.02%
7077 ALINK	30.28	178,499,840	4.36%
4591 RIBOMIC	29.62	341,931,470	9.13%
4586 MEDRX	25.51	340,499,140	15.17%
4883 MODALIS	25.10	3,207,995,890	12.84%