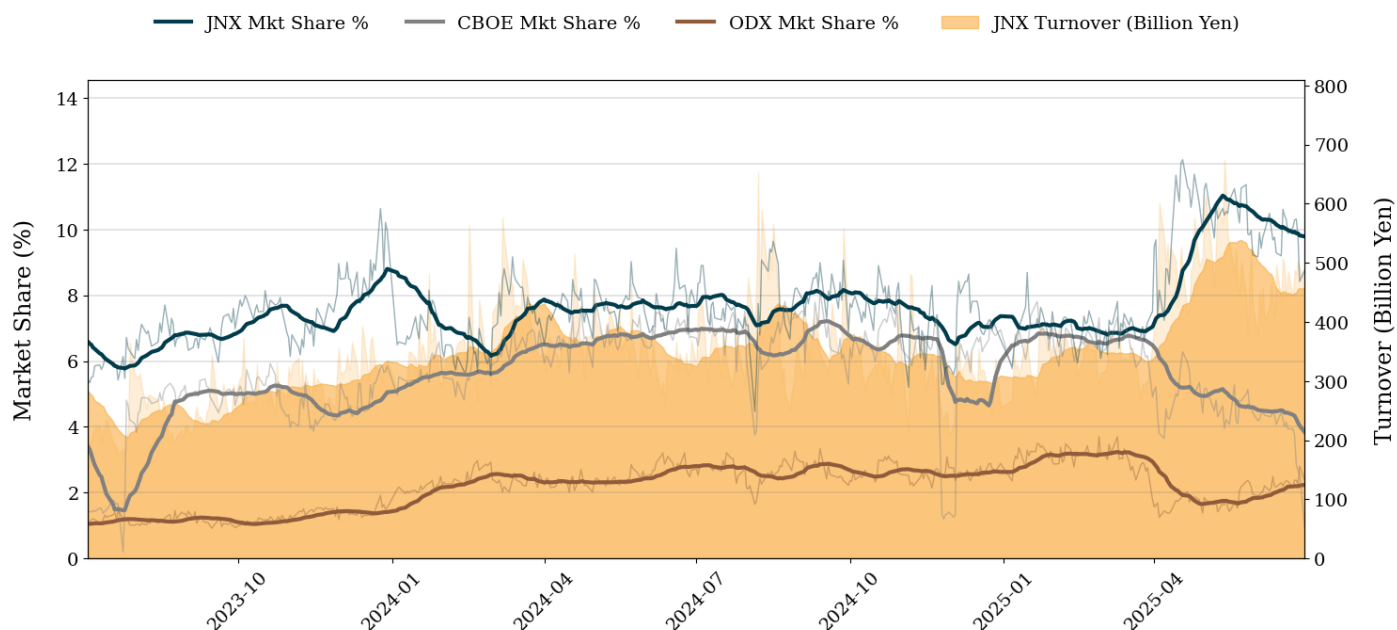


Market Report for June, 2025

Trading Summary

Total Monthly Turnover(JPY)	9,593,686,942,475	Total Monthly Volume	6,037,482,976
Average Daily Turnover(JPY)	456,842,235,356	Average Daily Volume	287,499,189
Average PI (bps)	2.59	Average Traded Symbols	3647

PTS Market Share and JNX Turnover (1-Month Moving Average)



Top Stocks by Turnover

Stock	Turnover(JPY)	Share	PI (bps)
6146 DISCO	951,431,942,830	18.89%	0.84
6920 LASRTEC	625,136,508,630	16.35%	0.95
6857 ADVNTST	531,669,704,530	10.06%	0.67
8136 SANRIO	440,927,547,390	11.82%	0.75
7013 IHI	419,077,196,800	16.60%	1.21

Top Stocks by Market Share

Stock	Turnover(JPY)	Share	PI (bps)
8918 LAND	12,256,650,360	95.71%	565.41
6740 JDI	2,349,416,160	57.52%	295.62
9973 KOZOHD	989,856,150	37.72%	236.81
1757 SOKENACE	309,769,300	36.14%	180.04
7357 GEOCODE	127,606,130	35.50%	7.55

Top Stocks by Price Improvement

Stock	Turnover(JPY)	Share	PI (bps)
8918 LAND	12,256,650,360	95.71%	565.41
6740 JDI	2,349,416,160	57.52%	295.62
9973 KOZOHD	989,856,150	37.72%	236.81
1757 SOKENACE	309,769,300	36.14%	180.04
4564 OTS	1,076,596,230	24.56%	144.36

Top Stocks by Savings

Stock	Turnover(JPY)	Share	Savings
8918 LAND	12,256,650,360	95.71%	353,533,960
6146 DISCO	951,431,942,830	18.89%	74,008,520
2134 KITAHAMA	18,226,156,530	20.27%	73,493,280
3350 METAPLNT	356,531,681,610	16.56%	55,350,710
6993 DAIKOKYA	14,194,146,400	21.50%	54,258,070

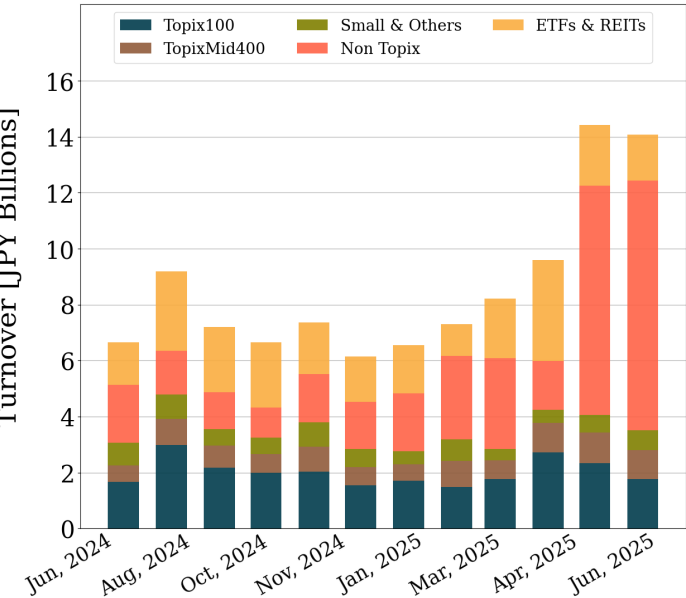
- ▶ Analysis is based on Japannext and LSEG data. Small & Others = Topix - Topix 500.
- ▶ All Japan Turnover = Japannext (J+X+U+N) + TSE (excl. Tostnet) + CBOE (CBOE-Alpha + CBOE-Select excl. CBOE-Match) + ODX. Night-time Session (N) is treated as the following business day.
Market Share = Japannext turnover / All Japan Turnover.
- ▶ Opening and Closing auction trades on the TSE are excluded from calculations.
- ▶ Price Improvement (PI) and Savings (PI*volume) are calculated by comparing the execution price against the primary market's best bid for each sell or best offer for each buy at the point of execution from the taker's perspective. Reported PI is a value-weighted average. Names with monthly traded value less than 100,000,000 JPY are excluded from the rankings tables.

Night-Time Market Report for June, 2025

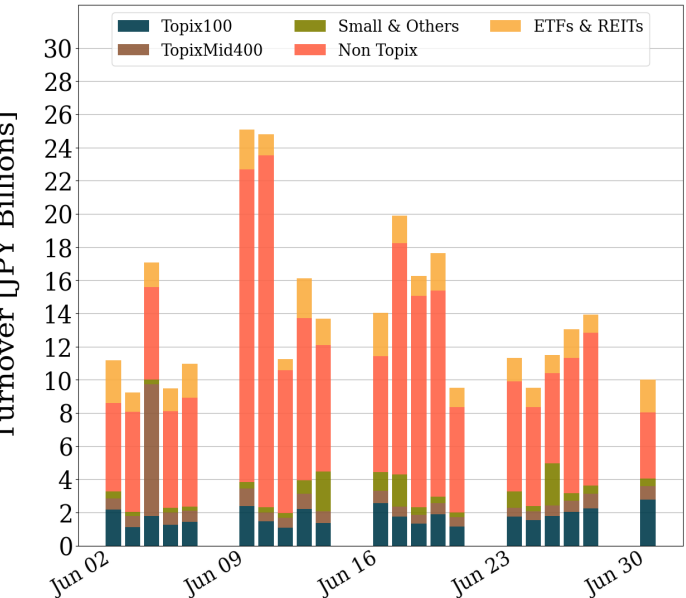
Trading Summary

Total Monthly Turnover(JPY)	295,480,839,628	Total Monthly Volume	1,239,064,185
Average Daily Turnover(JPY)	14,070,516,173	Average Daily Volume	59,003,056
Average Quoted Symbols	3856	Average Traded Symbols	886

Average Nightly Turnover



Nightly Turnover



Top Stocks by Turnover

Stock	Turnover(JPY)	Share
3350 METAPLNT	88,632,728,130	4.12%
5721 S-SCIEN	16,375,349,240	7.03%
1570 NFNKLV	13,914,235,666	0.57%
1357 NFNKDOUB	8,503,201,585	2.02%
6201 TOY-IND	7,609,639,750	2.00%
3905 DATASEC	7,029,350,050	2.37%
3825 REMIX	6,018,255,860	4.16%
9348 ISPACE	5,681,222,590	2.20%
2134 KITAHAMA	5,641,746,720	6.28%
5255 MONSTARL	5,371,055,150	6.48%
8918 LAND	5,244,504,190	40.95%
7603 MACHOUS	5,118,396,710	10.30%
1360 NKBEAR-2	4,461,244,245	1.82%
6993 DAIKOKYA	4,429,593,270	6.71%
6857 ADVNTST	4,014,285,900	0.08%

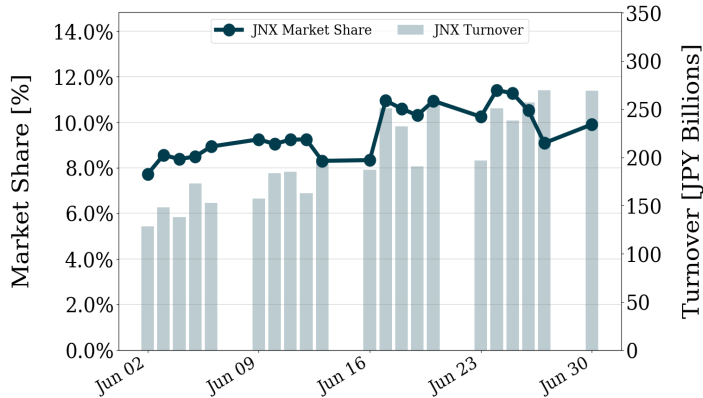
Top Stocks by Market Share

Stock	Turnover(JPY)	Share
8918 LAND	5,244,504,190	40.95%
7357 GEOCODE	107,686,610	29.96%
6740 JDI	696,536,050	17.05%
7370 ENJIN	62,612,770	13.54%
4261 ASIAQUES	42,985,060	12.34%
1757 SOKENACE	94,769,130	11.06%
7603 MACHOUS	5,118,396,710	10.30%
2342 TRANSG G	70,790,940	8.84%
4014 KARADANO	42,302,560	8.49%
7043 ALUE	1,769,750	8.43%
6494 NFK-HD	64,819,930	8.38%
4075 BRAINS	31,004,300	8.35%
4591 RIBOMIC	720,926,080	8.31%
3347 TRUST	44,237,920	8.18%
6577 BESTONE	93,095,550	7.67%

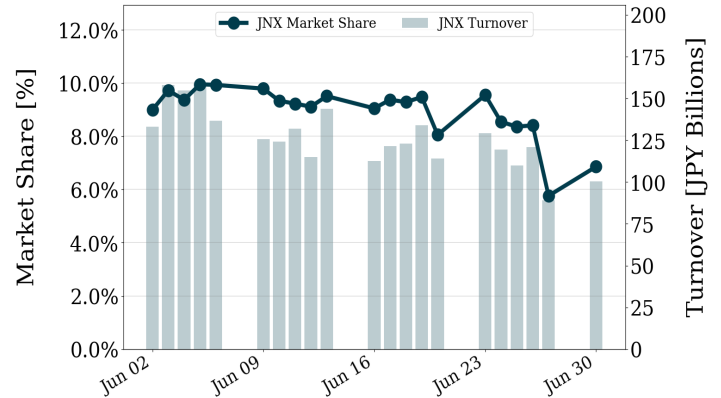
▶ Analysis is based on Japannext and LSEG data. Small & Others = Topix - Topix 500. Only Night-Time market is included.
▶ Night market session is treated as the following business day.

Turnover and Top Names for June, 2025

TOPIX 100 Turnover + Share



TOPIX Mid 400 Turnover + Share



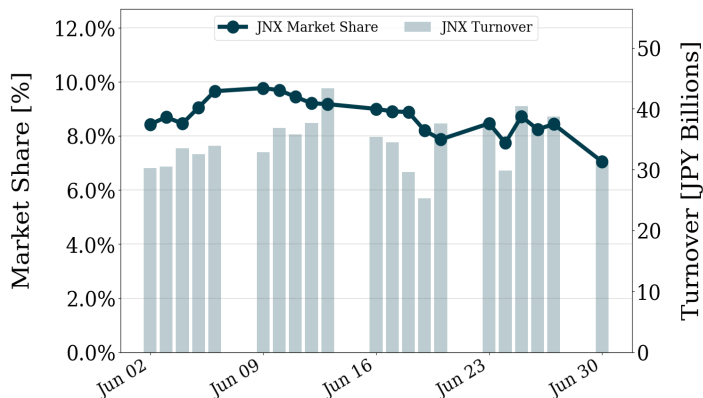
Top Stocks by Turnover

Stock	Turnover(JPY)	Share
6146 DISCO	951,431,942,830	18.89%
6920 LASRTEC	625,136,508,630	16.35%
6857 ADVNTST	531,669,704,530	10.06%
7011 MHI	379,199,175,040	9.64%
8035 TKOELCN	239,511,035,050	11.08%

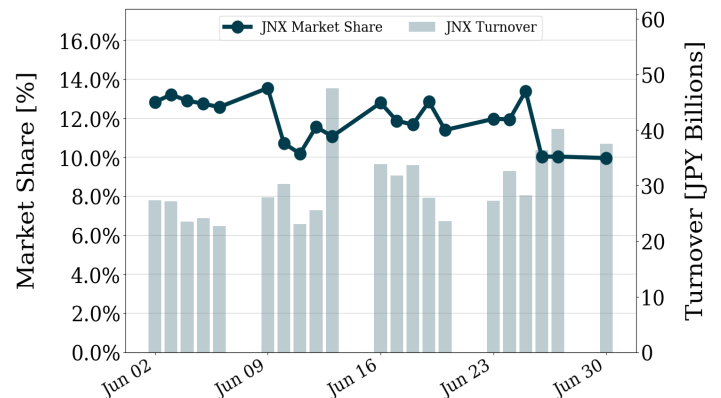
Top Stocks by Turnover

Stock	Turnover(JPY)	Share
8136 SANRIO	440,927,547,390	11.82%
7013 IHI	419,077,196,800	16.60%
5803 FUJIKRA	329,773,766,250	11.72%
7012 KHI	263,466,318,550	14.53%
6526 SOCIONXT	126,257,364,890	10.99%

TOPIX Smalls Turnover + Share



ETF/REIT Turnover + Share



Top Stocks by Turnover

Stock	Turnover(JPY)	Share
7014 NAMURA	55,285,257,240	9.79%
7003 MTI E&S	43,356,693,950	7.26%
285A KIOXIAHD	37,105,623,420	10.13%
4506 SMIPHARM	31,115,860,010	11.43%
3778 SAKURA	26,319,319,550	9.73%

Top Stocks by Turnover

Stock	Turnover(JPY)	Share
1570 NFNKLV	346,078,318,964	14.12%
1357 NFNKDOUB	85,932,879,455	20.37%
1360 NKBEAR-2	36,628,673,246	14.93%
1458 RK 225LV	29,272,996,175	13.72%
1579 225 BULL	19,261,692,093	10.63%

- ▶ Analysis is based on Japannext and LSEG data. Small & Others = Topix - Topix 500.
- ▶ All Japan Turnover = Japannext (J+X+U+N) + TSE (excl. Tostnet) + CBOE (CBOE-Alpha + CBOE-Select excl. CBOE-Match) + ODX. Night-time Session (N) is treated as the following business day.
Market Share = Japannext turnover / All Japan Turnover.
- ▶ Opening and Closing auction trades on the TSE are excluded from calculations.